



[Go to Product page](#)

Datasheet for ABIN6756695
anti-PRSS1 antibody (N-Term)

1 Image

Overview

| | |
|----------------------|--------------------------------------|
| Quantity: | 100 µL |
| Target: | PRSS1 |
| Binding Specificity: | N-Term |
| Reactivity: | Human |
| Host: | Rabbit |
| Clonality: | Polyclonal |
| Conjugate: | This PRSS1 antibody is un-conjugated |
| Application: | Western Blotting (WB), ELISA |

Product Details

| | |
|---------------|--|
| Immunogen: | Peptide derived from near the N terminus of human pancreatic cationic trypsin. |
| Purification: | Immunoaffinity purified |

Target Details

| | |
|-------------------|---|
| Target: | PRSS1 |
| Alternative Name: | PRSS1 / Trypsin (PRSS1 Products) |
| Background: | Name/Gene ID: PRSS1 Subfamily: Serine S1 Family: Protease |

Synonyms: PRSS1, Beta-trypsin, Cationic trypsinogen, Digestive zymogen, HPC, Hereditary

Target Details

pancreatitis, TRP1, TRY4, Trypsin, Trypsinogen i, TRYP1, Trypsinogen, TRY1, Trypsinogen 1, Nonfunctional trypsin 1, Protease serine 1, Serine protease 1, Trypsin I, Trypsin-1, Trypsinogen A

Gene ID: 5644

UniProt: [P07477](#)

Application Details

Application Notes: Approved: ELISA (1:20000 - 1:50000), WB

Comment: Target Species of Antibody: Human

Restrictions: For Research Use only

Handling

Format: Liquid

Concentration: Lot specific

Buffer: 20 mM Tris-HCl, pH 8.0, 10 mg/mL BSA, 0.05 % sodium azide

Preservative: Sodium azide

Precaution of Use: This product contains Sodium azide: a POISONOUS AND HAZARDOUS SUBSTANCE which should be handled by trained staff only.

Handling Advice: Aliquot to Avoid freeze/thaw cycles.

Storage: -20 °C

Storage Comment: Store at -20°C. Aliquot to avoid freeze/thaw cycles.

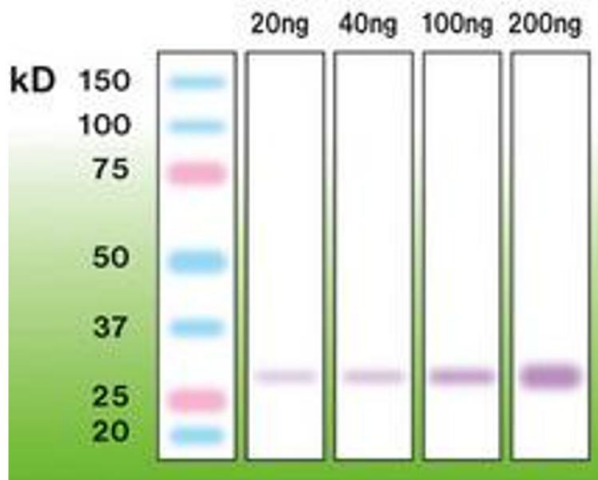


Image 1.