

Datasheet for ABIN675698  
**anti-RHOU antibody (AA 151-258)**[Go to Product page](#)

## 1 Image

## Overview

Quantity:	100 µL
Target:	RHOU
Binding Specificity:	AA 151-258
Reactivity:	Mouse, Rat
Host:	Rabbit
Clonality:	Polyclonal
Conjugate:	This RHOU antibody is un-conjugated
Application:	ELISA, Western Blotting (WB), Immunofluorescence (Cultured Cells) (IF (cc)), Immunofluorescence (Paraffin-embedded Sections) (IF (p)), Immunohistochemistry (Paraffin- embedded Sections) (IHC (p)), Immunohistochemistry (Frozen Sections) (IHC (fro))

## Product Details

Immunogen:	KLH conjugated synthetic peptide derived from human WRCH-1
Isotype:	IgG
Cross-Reactivity:	Mouse, Rat
Predicted Reactivity:	Human,Cow,Rabbit
Purification:	Purified by Protein A.

## Target Details

Target:	RHOU
---------	------

## Target Details

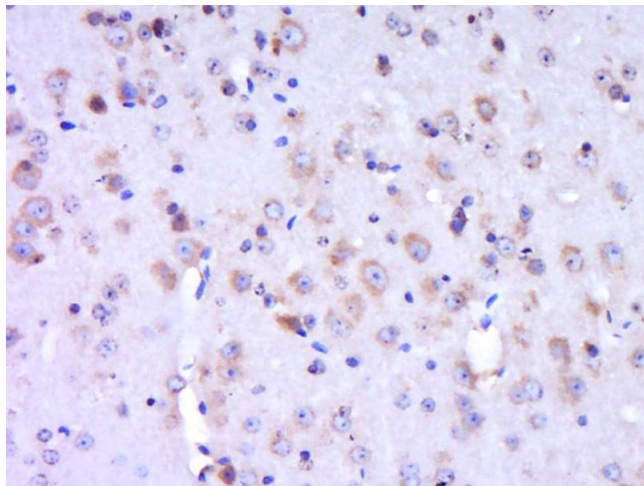
Alternative Name:	WRCH-1 ( <a href="#">RHOU Products</a> )
Background:	<p>Synonyms: Wnt-1 responsive Cdc42 homolog 1, Rho-related GTP-binding protein RhoU, Ryu GTPase, CDC42-like GTPase 1, Rho GTPase-like protein ARHU, GTP-binding protein-like 1, RHOU, SB128, ARHU, CDC42L1, G28K, WRCH1, RHOU_HUMAN.</p> <p>Background: The WRCH1 protein is a member of the Rho family of GTPases. This protein can activate PAK1 and JNK1, and can induce filopodium formation and stress fiber dissolution. It may also mediate the effects of WNT1 signaling in the regulation of cell morphology, cytoskeletal organization, and cell proliferation.</p>
Gene ID:	58480

## Application Details

Application Notes:	WB 1:300-5000 ELISA 1:500-1000 IHC-P 1:200-400 IHC-F 1:100-500 IF(IHC-P) 1:50-200 IF(IHC-F) 1:50-200 IF(ICC) 1:50-200
Restrictions:	For Research Use only

## Handling

Format:	Liquid
Concentration:	1 µg/µL
Buffer:	0.01M TBS( pH 7.4) with 1 % BSA, 0.02 % Proclin300 and 50 % Glycerol.
Preservative:	ProClin
Precaution of Use:	This product contains ProClin: a POISONOUS AND HAZARDOUS SUBSTANCE, which should be handled by trained staff only.
Storage:	4 °C,-20 °C
Storage Comment:	Shipped at 4°C. Store at -20°C for one year. Avoid repeated freeze/thaw cycles.
Expiry Date:	12 months



#### Immunohistochemistry (Paraffin-embedded Sections)

**Image 1.** Paraformaldehyde-fixed, paraffin embedded Mouse brain Antigen retrieval by boiling in sodium citrate buffer (pH6.0) for 15min Block endogenous peroxidase by 3% hydrogen peroxide for 20 minutes Blocking buffer (normal goat serum) at 37°C for 30min Antibody incubation with WRCH-1 Polyclonal Antibody, Unconjugated at 1:400 overnight at 4°C, DAB staining.