

Datasheet for ABIN6758166

**anti-GLUD1 antibody**[Go to Product page](#)**2** Images

## Overview

Quantity:	100 µg
Target:	GLUD1
Reactivity:	Human, Cow
Host:	Rabbit
Clonality:	Polyclonal
Conjugate:	This GLUD1 antibody is un-conjugated
Application:	Western Blotting (WB), Immunohistochemistry (IHC), ELISA, Immunohistochemistry (Paraffin-embedded Sections) (IHC (p))

## Product Details

Brand:	IHC-plus™
Immunogen:	Bovine liver glutamate dehydrogenase. Type of Immunogen: Purified protein
Isotype:	IgG
Specificity:	Assay by immunoelectrophoresis resulted in a single precipitin arc against anti rabbit serum as well as purified and partially purified bovine liver glutamate dehydrogenase.
Purification:	Ion exchange chromatography

## Target Details

Target:	GLUD1
---------	-------

## Target Details

Alternative Name:	GLUD1/Glutamate Dehydrogenase ( <a href="#">GLUD1 Products</a> )
Background:	Name/Gene ID: GLUD1  Synonyms: GLUD1, GDH1, GDH 1, Glutamate dehydrogenase 1, Glutamate dehydrogenase 2, GDH, GLUD
Gene ID:	2746
UniProt:	<a href="#">P00367</a>
Pathways:	<a href="#">Positive Regulation of Peptide Hormone Secretion</a> , <a href="#">Warburg Effect</a>

## Application Details

Application Notes:	Approved: ELISA (1:6000 - 1:24000), IHC, IHC-P (5 µg/mL), WB  Usage: Immunohistochemistry: This antibody was validated for use in immunohistochemistry on a panel of 21 formalin-fixed, paraffin-embedded (FFPE) human tissues after heat induced antigen retrieval in pH 6.0 citrate buffer. After incubation with the primary antibody, slides were incubated with biotinylated secondary antibody, followed by alkaline phosphatase-streptavidin and chromogen. The stained slides were evaluated by a pathologist to confirm staining specificity. The optimal working concentration for this antibody was determined to be 5 µg/mL.
Comment:	Target Species of Antibody: Bovine
Restrictions:	For Research Use only

## Handling

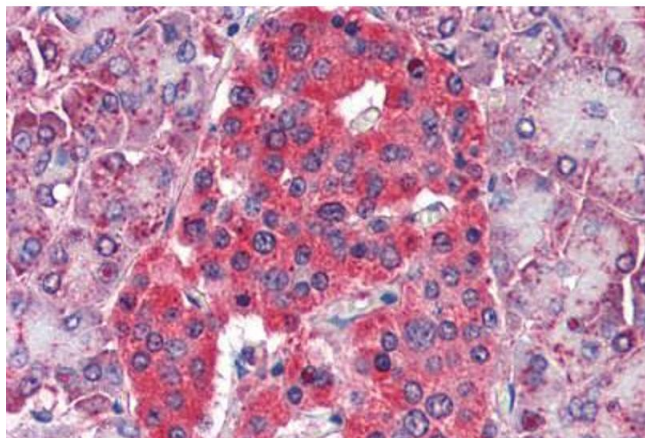
Format:	Liquid
Concentration:	Lot specific
Buffer:	PBS, pH 7.2, 0.01 % sodium azide, 40 % glycerol.
Preservative:	Sodium azide
Precaution of Use:	This product contains Sodium azide: a POISONOUS AND HAZARDOUS SUBSTANCE which should be handled by trained staff only.
Handling Advice:	Avoid repeat freeze-thaw cycles.
Storage:	4 °C, -20 °C

## Handling

Storage Comment:

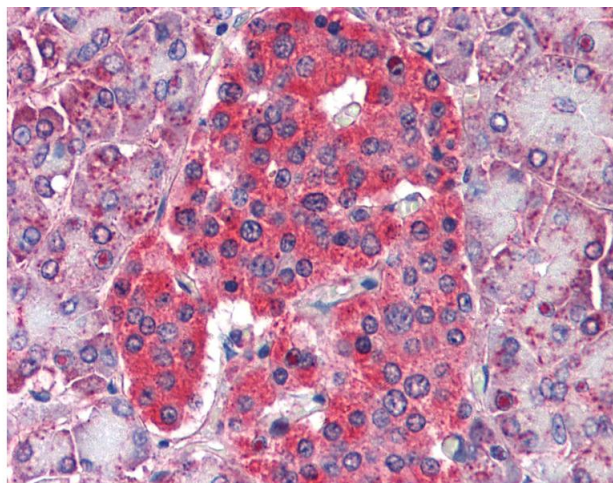
Short term: 4°C. Long term: Store at -20°C. Avoid freeze-thaw cycles.

## Images



### Immunohistochemistry (Paraffin-embedded Sections)

**Image 1.** Human Pancreas (formalin-fixed, paraffin-embedded) stained with GLUD1 antibody ABIN790324 at 5 ug/ml followed by biotinylated goat anti-rabbit IgG secondary antibody ABIN481713, alkaline phosphatase-streptavidin and chromogen.



### Immunohistochemistry

**Image 2.** Anti-GLUD1 antibody IHC of human pancreas. Immunohistochemistry of formalin-fixed, paraffin-embedded tissue after heat-induced antigen retrieval. Antibody concentration 5 ug/ml.