

Datasheet for ABIN675953
anti-ABI1 antibody (AA 101-200)[Go to Product page](#)

1 Image

Overview

Quantity:	100 µL
Target:	ABI1
Binding Specificity:	AA 101-200
Reactivity:	Rat
Host:	Rabbit
Clonality:	Polyclonal
Conjugate:	This ABI1 antibody is un-conjugated
Application:	Western Blotting (WB), ELISA, Immunohistochemistry (Paraffin-embedded Sections) (IHC (p)), Immunofluorescence (Cultured Cells) (IF (cc)), Immunofluorescence (Paraffin-embedded Sections) (IF (p)), Immunohistochemistry (Frozen Sections) (IHC (fro))

Product Details

Immunogen:	KLH conjugated synthetic peptide derived from human ABI1
Isotype:	IgG
Cross-Reactivity:	Rat
Predicted Reactivity:	Human,Mouse,Dog,Horse,Chicken,Rabbit
Purification:	Purified by Protein A.

Target Details

Target:	ABI1
---------	------

Target Details

Alternative Name:	ABI1 (ABI1 Products)
Background:	<p>Synonyms: E3B1, ABL-1, ABLBP4, NAP1BP, SSH3BP, SSH3BP1, Abl interactor 1, Abelson interactor 1, Abl-binding protein 4, Eps8 SH3 domain-binding protein, Eps8-binding protein, Nap1-binding protein, Spectrin SH3 domain-binding protein 1, ABI1</p> <p>Background: May act in negative regulation of cell growth and transformation by interacting with nonreceptor tyrosine kinases ABL1 and/or ABL2. May play a role in regulation of EGF-induced Erk pathway activation. Involved in cytoskeletal reorganization and EGFR signaling. Together with EPS8 participates in transduction of signals from Ras to Rac. In vitro, a trimeric complex of ABI1, EPS8 and SOS1 exhibits Rac specific guanine nucleotide exchange factor (GEF) activity and ABI1 seems to act as an adapter in the complex. Regulates ABL1/c-Abl-mediated phosphorylation of ENAH. Recruits WASF1 to lamellipodia and there seems to regulate WASF1 protein level. In brain, seems to regulate the dendritic outgrowth and branching as well as to determine the shape and number of synaptic contacts of developing neurons.</p>
Gene ID:	10006
UniProt:	Q8IZP0
Pathways:	RTK Signaling , Response to Water Deprivation , ER-Nucleus Signaling

Application Details

Application Notes:	WB 1:300-5000 ELISA 1:500-1000 IHC-P 1:200-400 IHC-F 1:100-500 IF(IHC-P) 1:50-200 IF(IHC-F) 1:50-200 IF(ICC) 1:50-200
Restrictions:	For Research Use only

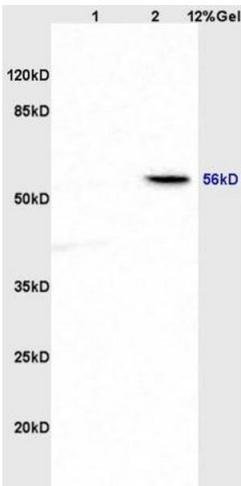
Handling

Format:	Liquid
Concentration:	1 µg/µL
Buffer:	0.01M TBS(pH 7.4) with 1 % BSA, 0.02 % Proclin300 and 50 % Glycerol.
Preservative:	ProClin

Handling

Precaution of Use:	This product contains ProClin: a POISONOUS AND HAZARDOUS SUBSTANCE, which should be handled by trained staff only.
Storage:	4 °C,-20 °C
Storage Comment:	Shipped at 4°C. Store at -20°C for one year. Avoid repeated freeze/thaw cycles.
Expiry Date:	12 months

Images



SDS-PAGE

Image 1. Lane 1: rat brain lysates Lane 2: rat heart lysates probed with Anti ABI1 Polyclonal Antibody, Unconjugated (ABIN675953) at 1:200 in 4 °C. Followed by conjugation to secondary antibody at 1:3000 90min in 37 °C. Predicted band 56kD. Observed band size: 56kD.