

Datasheet for ABIN676058  
**anti-Kallikrein 14 antibody (AA 201-267)**[Go to Product page](#)

## 2 Images

## Overview

Quantity:	100 µL
Target:	Kallikrein 14 (KLK14)
Binding Specificity:	AA 201-267
Reactivity:	Rat
Host:	Rabbit
Clonality:	Polyclonal
Conjugate:	This Kallikrein 14 antibody is un-conjugated
Application:	Western Blotting (WB), ELISA, Immunohistochemistry (Paraffin-embedded Sections) (IHC (p)), Immunofluorescence (Paraffin-embedded Sections) (IF (p)), Immunohistochemistry (Frozen Sections) (IHC (fro)), Immunofluorescence (Cultured Cells) (IF (cc))

## Product Details

Immunogen:	KLH conjugated synthetic peptide derived from human KLK14
Isotype:	IgG
Cross-Reactivity:	Rat
Predicted Reactivity:	Human,Mouse,Dog,Cow,Horse
Purification:	Purified by Protein A.

## Target Details

Target:	Kallikrein 14 (KLK14)
---------	-----------------------

## Target Details

Alternative Name:	Kallikrein 14 ( <a href="#">KLK14 Products</a> )
Background:	<p>Synonyms: KLK-L6, Kallikrein-14, hK14, Kallikrein-like protein 6, KLK14, KLKL6</p> <p>Background: Serine-type endopeptidase with a dual trypsin-like and chymotrypsin-like substrate specificity. May activate/inactivate the proteinase-activated receptors F2R, F2RL1 and F2RL3 and other kallikreins including KLK1, KLK3, KLK5 and KLK11. May function in seminal clot liquefaction through direct cleavage of the semenogelin SEMG1 and SEMG2 and activation of KLK3. May function through desmoglein DSG1 cleavage in epidermal desquamation a process by which the most superficial corneocytes are shed from the skin surface. May be involved in several aspects of tumor progression including growth, invasion and angiogenesis.</p>
Gene ID:	43847
UniProt:	<a href="#">Q9P0G3</a>
Pathways:	<a href="#">Complement System</a> , <a href="#">Regulation of G-Protein Coupled Receptor Protein Signaling</a>

## Application Details

Application Notes:	<p>WB 1:300-5000</p> <p>ELISA 1:500-1000</p> <p>IHC-P 1:200-400</p> <p>IHC-F 1:100-500</p> <p>IF(IHC-P) 1:50-200</p> <p>IF(IHC-F) 1:50-200</p> <p>IF(ICC) 1:50-200</p>
Restrictions:	For Research Use only

## Handling

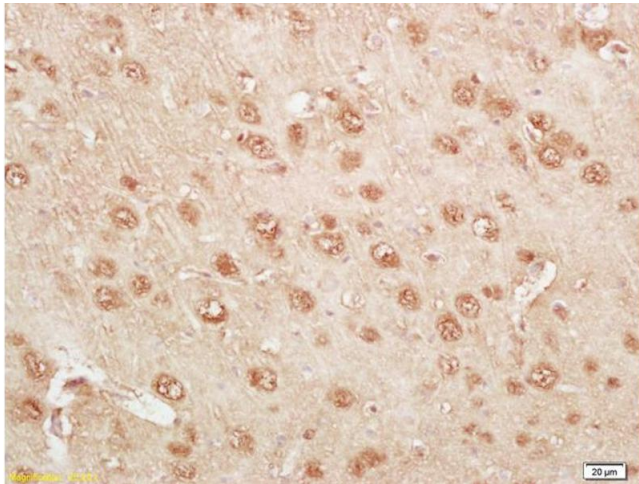
Format:	Liquid
Concentration:	1 µg/µL
Buffer:	0.01M TBS( pH 7.4) with 1 % BSA, 0.02 % Proclin300 and 50 % Glycerol.
Preservative:	ProClin
Precaution of Use:	This product contains ProClin: a POISONOUS AND HAZARDOUS SUBSTANCE, which should be handled by trained staff only.
Storage:	4 °C, -20 °C

## Handling

Storage Comment: Shipped at 4°C. Store at -20°C for one year. Avoid repeated freeze/thaw cycles.

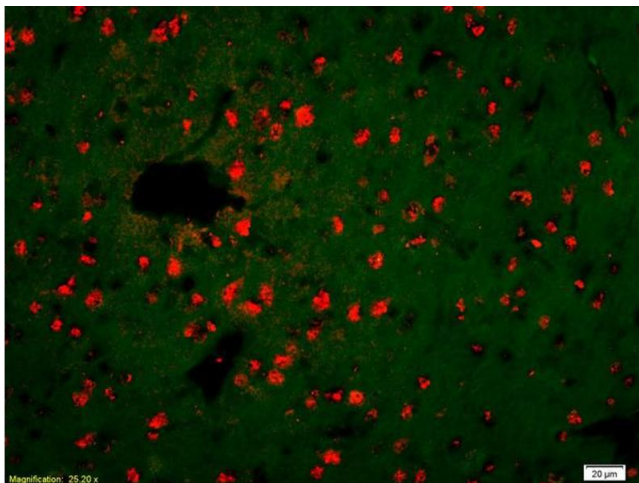
Expiry Date: 12 months

## Images



### Immunohistochemistry

**Image 1.** Formalin-fixed and paraffin embedded rat brain tissue labeled Anti-KLK14 Polyclonal Antibody, Unconjugated (ABIN676058) at 1:200, followed by conjugation to the secondary antibody and DAB staining



### Immunofluorescence

**Image 2.** Formalin-fixed and paraffin-embedded rat brain labeled with Anti-KLK14 Polyclonal Antibody, Unconjugated (ABIN676058) 1:200, overnight at 4°C, The secondary antibody was Goat Anti-Rabbit IgG, Cy3 conjugated used at 1:200 dilution for 40 minutes at 37°C.