

Datasheet for ABIN676073  
**anti-LAMA3 antibody (AA 2701-2800)**[Go to Product page](#)

## 1 Image

## Overview

Quantity:	100 µL
Target:	LAMA3
Binding Specificity:	AA 2701-2800
Reactivity:	Human
Host:	Rabbit
Clonality:	Polyclonal
Conjugate:	This LAMA3 antibody is un-conjugated
Application:	ELISA, Immunohistochemistry (Paraffin-embedded Sections) (IHC (p))

## Product Details

Immunogen:	KLH conjugated synthetic peptide derived from human LAMA3
Isotype:	IgG
Cross-Reactivity:	Human
Predicted Reactivity:	Mouse,Rat
Purification:	Purified by Protein A.

## Target Details

Target:	LAMA3
Alternative Name:	LAMA3/Laminin 5 alpha 3 ( <a href="#">LAMA3 Products</a> )
Background:	Synonyms: E170, LOCS, BM600, LAMNA, Laminin subunit alpha-3, Epiligrin 170 kDa subunit,

## Target Details

Epiligrin subunit alpha, Kalinin subunit alpha, Laminin-5 subunit alpha, Laminin-6 subunit alpha, Laminin-7 subunit alpha, Nicein subunit alpha, LAMA3

Background: Binding to cells via a high affinity receptor, laminin is thought to mediate the attachment, migration and organization of cells into tissues during embryonic development by interacting with other extracellular matrix components. Laminin-5 is thought to be involved in (1) cell adhesion via integrin alpha-3/beta-1 in focal adhesion and integrin alpha-6/beta-4 in hemidesmosomes, (2) signal transduction via tyrosine phosphorylation of pp125-FAK and p80, (3) differentiation of keratinocytes.

Gene ID: 3909

UniProt: [Q16787](#)

## Application Details

Application Notes: ELISA 1:500-1000  
IHC-P 1:200-400

Restrictions: For Research Use only

## Handling

Format: Liquid

Concentration: 1 µg/µL

Buffer: 0.01M TBS( pH 7.4) with 1 % BSA, 0.02 % Proclin300 and 50 % Glycerol.

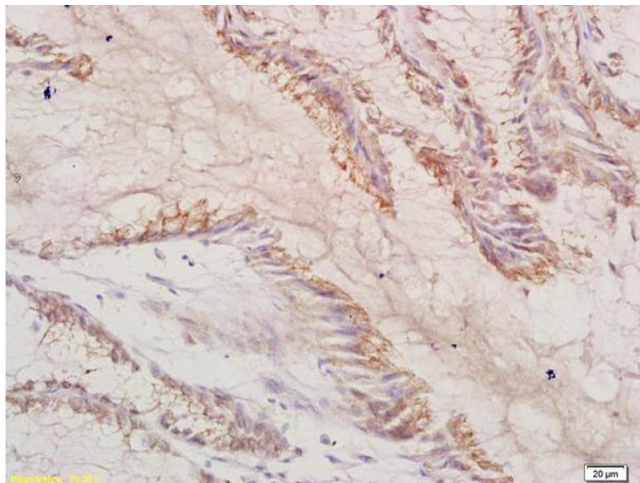
Preservative: ProClin

Precaution of Use: This product contains ProClin: a POISONOUS AND HAZARDOUS SUBSTANCE, which should be handled by trained staff only.

Storage: 4 °C,-20 °C

Storage Comment: Shipped at 4°C. Store at -20°C for one year. Avoid repeated freeze/thaw cycles.

Expiry Date: 12 months



#### Immunohistochemistry

**Image 1.** Formalin-fixed and paraffin embedded human gastric carcinoma labeled with Anti-LAMA3/Laminin 5 alpha 3 Polyclonal Antibody, Unconjugated (ABIN676073) at 1:200 followed by conjugation to the secondary antibody and DAB staining