

Datasheet for ABIN676088
anti-LAMP1 antibody (AA 301-417)

5 Images

5 Publications

[Go to Product page](#)

Overview

Quantity:	100 µL
Target:	LAMP1
Binding Specificity:	AA 301-417
Reactivity:	Human, Mouse, Rat, Monkey
Host:	Rabbit
Clonality:	Polyclonal
Conjugate:	This LAMP1 antibody is un-conjugated
Application:	Western Blotting (WB), Flow Cytometry (FACS), ELISA, Immunocytochemistry (ICC), Immunohistochemistry (Paraffin-embedded Sections) (IHC (p)), Immunohistochemistry (Frozen Sections) (IHC (fro)), Immunofluorescence (Paraffin-embedded Sections) (IF (p)), Immunofluorescence (Cultured Cells) (IF (cc))

Product Details

Immunogen:	KLH conjugated synthetic peptide derived from human LAMP-1
Isotype:	IgG
Cross-Reactivity:	Human, Monkey, Mouse, Rat
Purification:	Purified by Protein A.

Target Details

Target:	LAMP1
Alternative Name:	LAMP-1 (LAMP1 Products)

Target Details

Background:	<p>Synonyms: LAMPA, CD17a, LGP12, Lysosome-associated membrane glycoprotein 1, LAMP-1, Lysosome-associated membrane protein 1, CD17 antigen-like family member A, LAMP1</p> <p>Background: Lysosome associated membrane protein (LAMP1), also known as lgp120 or lgpA, is a type 1 integral membrane protein that is transported from trans Golgi networks to endosomes and then lysosomes. Upon cell activation, LAMP1 transfer to the plasma membrane is dependent on a carboxyl terminal tyrosine based motif (YXXI). Perturbation in the spacing between the tyrosine based motif relative to the membrane abolishes lysosome localization of LAMP1. This mutant protein then cycles between the plasma membrane and the endosome. Cell surface LAMP1 and LAMP2 have been shown to promote adhesion of human peripheral blood mononuclear cells (PBMC) to vascular endothelium, therefore they are possibly involved in the adhesion of PBMCs to the site of inflammation.</p>
Gene ID:	3916
UniProt:	P11279
Pathways:	Autophagy

Application Details

Application Notes:	<p>WB 1:300-5000</p> <p>ELISA 1:500-1000</p> <p>FCM 1:20-100</p> <p>IHC-P 1:200-400</p> <p>IHC-F 1:100-500</p> <p>IF(IHC-P) 1:50-200</p> <p>IF(IHC-F) 1:50-200</p> <p>IF(ICC) 1:50-200</p> <p>ICC 1:100-500</p>
Restrictions:	For Research Use only

Handling

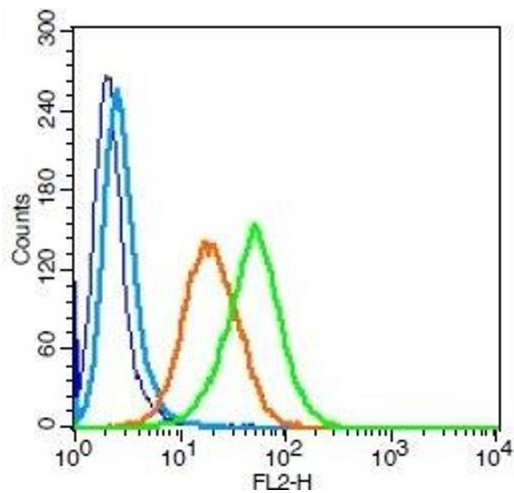
Format:	Liquid
Concentration:	1 µg/µL
Buffer:	0.01M TBS(pH 7.4) with 1 % BSA, 0.02 % Proclin300 and 50 % Glycerol.
Preservative:	ProClin

Handling

Precaution of Use:	This product contains ProClin: a POISONOUS AND HAZARDOUS SUBSTANCE, which should be handled by trained staff only.
Storage:	4 °C, -20 °C
Storage Comment:	Shipped at 4°C. Store at -20°C for one year. Avoid repeated freeze/thaw cycles.
Expiry Date:	12 months

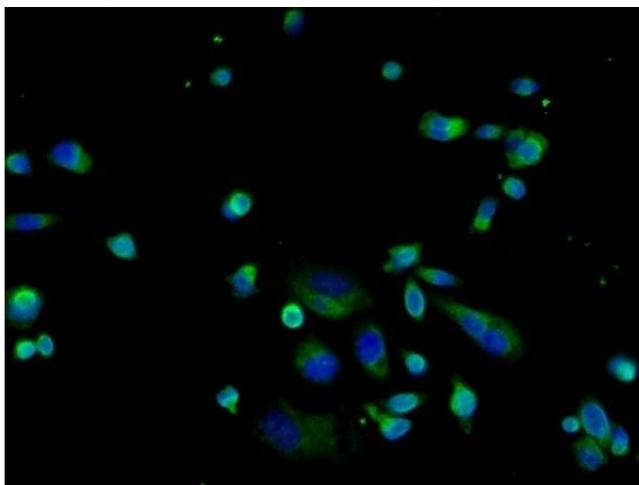
Publications

Product cited in:	<p>Bechor, Nachmias, Elia, Haim, Vatarescu, Leikin-Frenkel, Gericke, Tarnovscki, Las, Rudich: "Adipose tissue conditioned media support macrophage lipid-droplet biogenesis by interfering with autophagic flux." in: Biochimica et biophysica acta, Vol. 1862, Issue 9, pp. 1001-1012, (2017) (PubMed).</p> <p>Pan, Kang, Wang, Liu, Oshima, Huang, Zhang, Yearsley, Yu, Wang: "Black Raspberries Enhance Natural Killer Cell Infiltration into the Colon and Suppress the Progression of Colorectal Cancer." in: Frontiers in immunology, Vol. 8, pp. 997, (2017) (PubMed).</p> <p>Guo, Zhao, Qiu, Deis, Huang, Tang, Chen: "Niemann-Pick type C2 deficiency impairs autophagy-lysosomal activity, mitochondrial function, and TLR signaling in adipocytes." in: Journal of lipid research, Vol. 57, Issue 9, pp. 1644-58, (2016) (PubMed).</p> <p>Jeong, Lee, Yang, Seong: "Combination of macrophage inflammatory protein 1 alpha with existing therapies to enhance the antitumor effects on murine hepatoma." in: Journal of radiation research, (2014) (PubMed).</p> <p>Sun, Huang, Wang, Yu, Li, Li, Hu, Hao, Ishag, Mao: "Porcine reproductive and respiratory syndrome virus induces autophagy to promote virus replication." in: Autophagy, Vol. 8, Issue 10, pp. 1434-47, (2012) (PubMed).</p>
-------------------	---



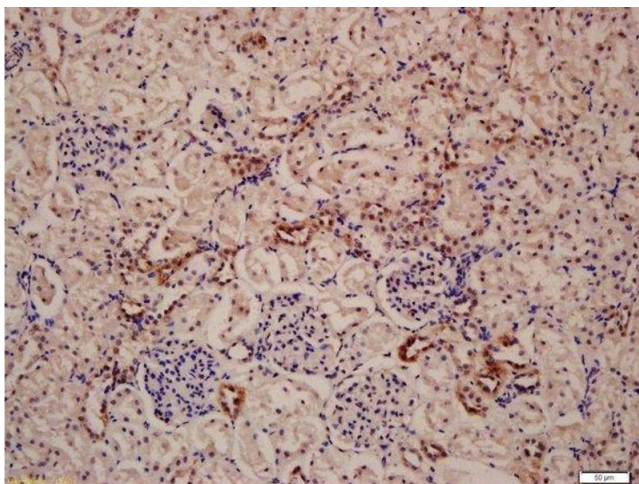
Flow Cytometry

Image 1. Human U937 cells probed with LAMP-1 Polyclonal Antibody, Unconjugated (green) at 1:100 for 30 minutes followed by a PE conjugated secondary antibody compared to unstained cells (blue), secondary only (light blue), and isotype control (orange).



Immunofluorescence (Cultured Cells)

Image 2. Image provided by One World Lab validation initiative. PC3 cells were stained with LAMP-1 Polyclonal Antibody, Unconjugated at [1:100] in PBS and incubated for one hour at room temperature, followed by secondary antibody incubation, DAPI staining of the nuclei and detection.



Immunohistochemistry (Paraffin-embedded Sections)

Image 3. Formalin-fixed and paraffin embedded rat kidney labeled with Anti-LAMP-1 Polyclonal Antibody, Unconjugated at 1:200 followed by conjugation to the secondary antibody and DAB staining

Please check the [product details page](#) for more images. Overall 5 images are available for ABIN676088.