



Datasheet for ABIN676133

anti-Lipoprotein Lipase antibody (AA 401-475)



[Go to Product page](#)

1 Image

Overview

Quantity:	100 µL
Target:	Lipoprotein Lipase (LPL)
Binding Specificity:	AA 401-475
Reactivity:	Human, Rat, Mouse
Host:	Rabbit
Clonality:	Polyclonal
Conjugate:	This Lipoprotein Lipase antibody is un-conjugated
Application:	Western Blotting (WB), ELISA, Flow Cytometry (FACS), Immunohistochemistry (Paraffin-embedded Sections) (IHC (p)), Immunofluorescence (Cultured Cells) (IF (cc)), Immunofluorescence (Paraffin-embedded Sections) (IF (p)), Immunohistochemistry (Frozen Sections) (IHC (fro))

Product Details

Immunogen:	KLH conjugated synthetic peptide derived from human LPL
Isotype:	IgG
Cross-Reactivity:	Human, Mouse, Rat
Predicted Reactivity:	Cow, Sheep, Pig, Rabbit, Guinea Pig
Purification:	Purified by Protein A.

Target Details

Target:	Lipoprotein Lipase (LPL)
---------	--------------------------

Target Details

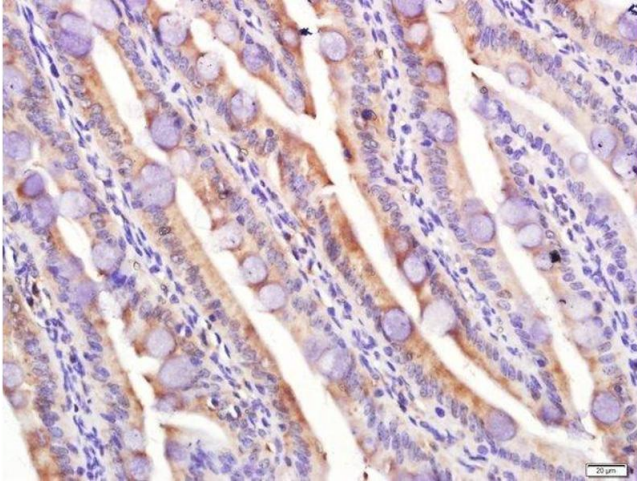
Alternative Name:	LPL (LPL Products)
Background:	Synonyms: LIPD, HDLCQ11, Lipoprotein lipase, LPL Background: The primary function of this lipase is the hydrolysis of triglycerides of circulating chylomicrons and very low density lipoproteins (VLDL). Binding to heparin sulfate proteoglycans at the cell surface is vital to the function. The apolipoprotein, APOC2, acts as a coactivator of LPL activity in the presence of lipids on the luminal surface of vascular endothelium (By similarity).
Gene ID:	4023
UniProt:	P06858
Pathways:	Lipid Metabolism

Application Details

Application Notes:	WB 1:300-5000 ELISA 1:500-1000 FCM 1:20-100 IHC-P 1:200-400 IHC-F 1:100-500 IF(IHC-P) 1:50-200 IF(IHC-F) 1:50-200 IF(ICC) 1:50-200
Restrictions:	For Research Use only

Handling

Format:	Liquid
Concentration:	1 µg/µL
Buffer:	0.01M TBS(pH 7.4) with 1 % BSA, 0.02 % Proclin300 and 50 % Glycerol.
Preservative:	ProClin
Precaution of Use:	This product contains ProClin: a POISONOUS AND HAZARDOUS SUBSTANCE, which should be handled by trained staff only.
Storage:	4 °C,-20 °C
Storage Comment:	Shipped at 4°C. Store at -20°C for one year. Avoid repeated freeze/thaw cycles.



Immunohistochemistry (Paraffin-embedded Sections)

Image 1. Paraformaldehyde-fixed, paraffin embedded rat small intestine tissue, Antigen retrieval by boiling in sodium citrate buffer(pH6) for 15min, Block endogenous peroxidase by 3% hydrogen peroxide for 30 minutes, Blocking buffer (normal goat serum) at 37°C for 20min, Antibody incubation with Rabbit Anti-LPL Polyclonal Antibody, Unconjugated at 1:400 overnight at 4°C, followed by a conjugated secondary and DAB staining