

Datasheet for ABIN676223
anti-MASP2 antibody (AA 351-450)[Go to Product page](#)

4 Images

Overview

Quantity:	100 µL
Target:	MASP2
Binding Specificity:	AA 351-450
Reactivity:	Human, Mouse, Rat
Host:	Rabbit
Clonality:	Polyclonal
Conjugate:	This MASP2 antibody is un-conjugated
Application:	Western Blotting (WB), ELISA, Immunofluorescence (Paraffin-embedded Sections) (IF (p)), Immunofluorescence (Cultured Cells) (IF (cc)), Immunohistochemistry (Frozen Sections) (IHC (fro)), Immunohistochemistry (Paraffin-embedded Sections) (IHC (p))

Product Details

Immunogen:	KLH conjugated synthetic peptide derived from human MASP2
Isotype:	IgG
Cross-Reactivity:	Human, Mouse, Rat
Predicted Reactivity:	Horse
Purification:	Purified by Protein A.

Target Details

Target:	MASP2
---------	-------

Target Details

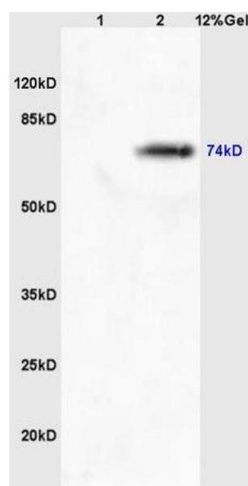
Alternative Name:	MASP2 (MASP2 Products)
Background:	<p>Synonyms: sMAP, MAP19, MASP-2, MASP1P1, Mannan-binding lectin serine protease 2, MBL-associated serine protease 2, Mannose-binding protein-associated serine protease 2, MASP2</p> <p>Background: Serum protease that plays an important role in the activation of the complement system via mannose-binding lectin. After activation by auto-catalytic cleavage it cleaves C2 and C4, leading to their activation and to the formation of C3 convertase.</p>
Gene ID:	10747
UniProt:	O00187
Pathways:	Complement System

Application Details

Application Notes:	<p>WB 1:300-5000</p> <p>ELISA 1:500-1000</p> <p>IHC-P 1:200-400</p> <p>IHC-F 1:100-500</p> <p>IF(IHC-P) 1:50-200</p> <p>IF(IHC-F) 1:50-200</p> <p>IF(ICC) 1:50-200</p>
Restrictions:	For Research Use only

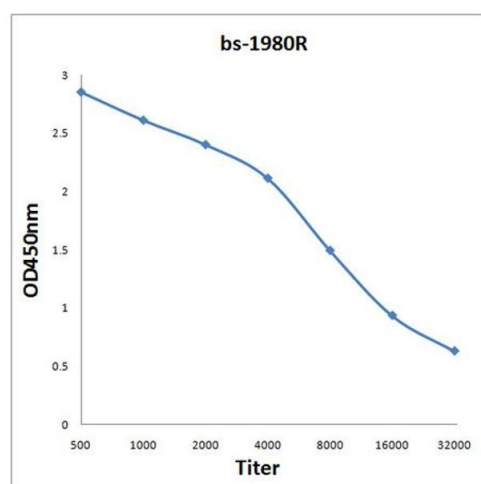
Handling

Format:	Liquid
Concentration:	1 µg/µL
Buffer:	0.01M TBS(pH 7.4) with 1 % BSA, 0.02 % Proclin300 and 50 % Glycerol.
Preservative:	ProClin
Precaution of Use:	This product contains ProClin: a POISONOUS AND HAZARDOUS SUBSTANCE, which should be handled by trained staff only.
Storage:	4 °C, -20 °C
Storage Comment:	Shipped at 4°C. Store at -20°C for one year. Avoid repeated freeze/thaw cycles.
Expiry Date:	12 months



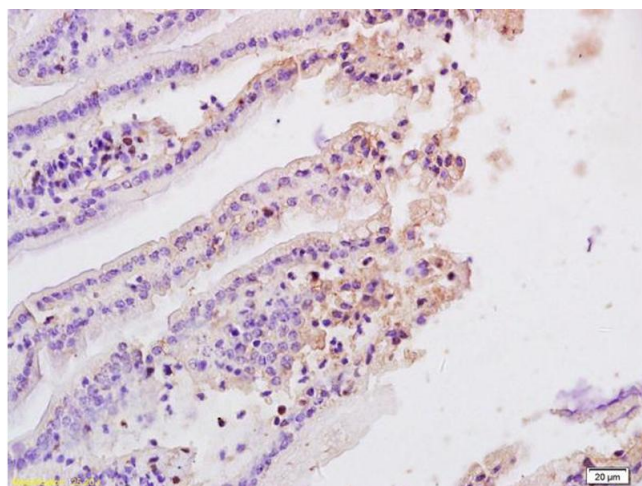
SDS-PAGE

Image 1. Lane 1: mouse lung lysates Lane 2: mouse brain lysates probed with Rabbit Anti-MASP2 Polyclonal Antibody, Unconjugated (ABIN676223) at 1:200 in 4 °C. Followed by conjugation to secondary antibody at 1:3000 90min in 37 °C. Predicted band 74kD. Observed band size: 74kD.



ELISA

Image 2. Antigen: 0.2 µg/100 µL Primary: Antiserum, 1:500, 1:1000, 1:2000, 1:4000, 1:8000, 1:16000, 1:32000; Secondary: HRP conjugated Goat Anti-Rabbit IgG at 1: 5000; TMB staining; Read the data in Microplate Reader by 450nm



Immunohistochemistry

Image 3. Formalin-fixed and paraffin embedded rat ileum labeled with Anti- MASP2 Polyclonal Antibody, Unconjugated (ABIN676223) at 1:200, followed by conjugation to the secondary antibody and DAB staining.

Please check the [product details page](#) for more images. Overall 4 images are available for ABIN676223.