

Datasheet for ABIN676238
anti-MCM2 antibody (AA 601-700)[Go to Product page](#)

3 Images

Overview

| | |
|----------------------|--|
| Quantity: | 100 µL |
| Target: | MCM2 |
| Binding Specificity: | AA 601-700 |
| Reactivity: | Human, Mouse |
| Host: | Rabbit |
| Clonality: | Polyclonal |
| Conjugate: | This MCM2 antibody is un-conjugated |
| Application: | ELISA, Immunohistochemistry (Paraffin-embedded Sections) (IHC (p)), Flow Cytometry (FACS), Immunofluorescence (Paraffin-embedded Sections) (IF (p)), Immunofluorescence (Cultured Cells) (IF (cc)), Immunohistochemistry (Frozen Sections) (IHC (fro)) |

Product Details

| | |
|-----------------------|--|
| Immunogen: | KLH conjugated synthetic peptide derived from human MCM2 |
| Isotype: | IgG |
| Cross-Reactivity: | Human, Mouse |
| Predicted Reactivity: | Rat,Dog,Cow,Horse,Chicken,Rabbit |
| Purification: | Purified by Protein A. |

Target Details

| | |
|---------|------|
| Target: | MCM2 |
|---------|------|

Target Details

| | |
|-------------------|---|
| Alternative Name: | MCM2 (MCM2 Products) |
| Background: | <p>Synonyms: BM28, CCNL1, CDCL1, cdc19, D3S3194, MITOTIN, DNA replication licensing factor MCM2, Minichromosome maintenance protein 2 homolog, Nuclear protein BM28, MCM2, KIAA0030</p> <p>Background: Acts as component of the MCM2-7 complex (MCM complex) which is the putative replicative helicase essential for 'once per cell cycle' DNA replication initiation and elongation in eukaryotic cells. The active ATPase sites in the MCM2-7 ring are formed through the interaction surfaces of two neighboring subunits such that a critical structure of a conserved arginine finger motif is provided in trans relative to the ATP-binding site of the Walker A box of the adjacent subunit. The six ATPase active sites, however, are likely to contribute differentially to the complex helicase activity. Required for the entry in S phase and for cell division.</p> |
| Gene ID: | 4171 |
| UniProt: | P49736 |
| Pathways: | DNA Damage Repair , Mitotic G1-G1/S Phases , DNA Replication , Chromatin Binding , Synthesis of DNA |

Application Details

| | |
|--------------------|--|
| Application Notes: | ELISA 1:500-1000 FCM 1:20-100 IHC-P 1:200-400 IHC-F 1:100-500 IF(IHC-P) 1:50-200 IF(IHC-F) 1:50-200 IF(ICC) 1:50-200 |
| Restrictions: | For Research Use only |

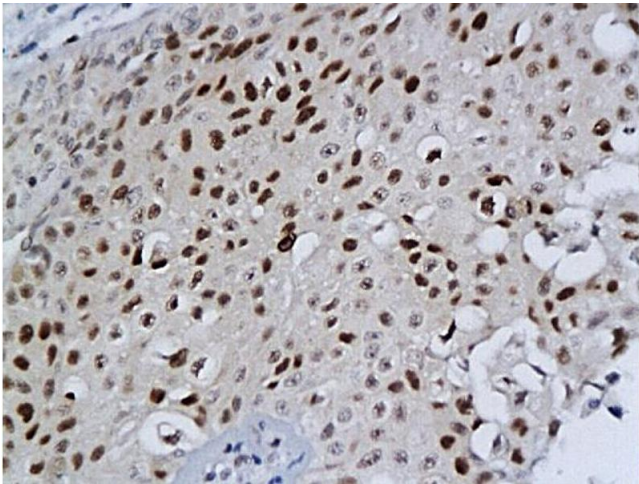
Handling

| | |
|--------------------|---|
| Format: | Liquid |
| Concentration: | 1 µg/µL |
| Buffer: | 0.01M TBS(pH 7.4) with 1 % BSA, 0.02 % Proclin300 and 50 % Glycerol. |
| Preservative: | ProClin |
| Precaution of Use: | This product contains ProClin: a POISONOUS AND HAZARDOUS SUBSTANCE, which should be |

Handling

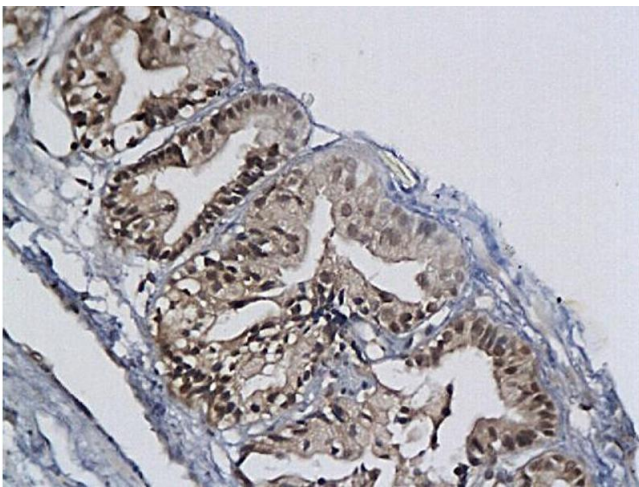
| | |
|------------------|---|
| | handled by trained staff only. |
| Storage: | 4 °C,-20 °C |
| Storage Comment: | Shipped at 4°C. Store at -20°C for one year. Avoid repeated freeze/thaw cycles. |
| Expiry Date: | 12 months |

Images



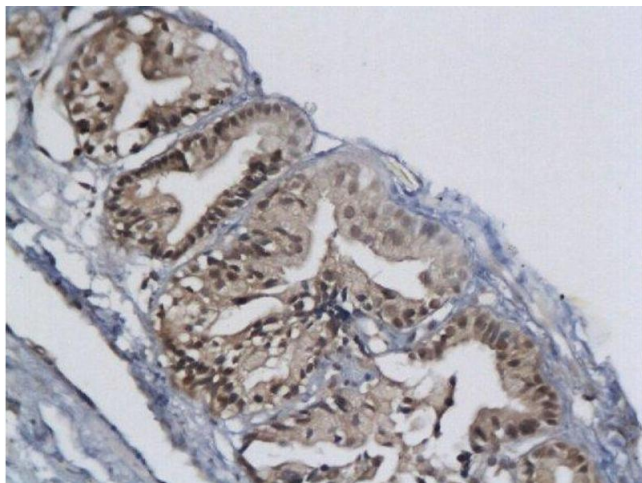
Immunohistochemistry

Image 1. Formalin-fixed and paraffin embedded bladder cancer labeled with Anti-MCM-2 Polyclonal Antibody, Unconjugated (ABIN676238) at 1:200 followed by conjugation to the secondary antibody and DAB staining



Immunohistochemistry

Image 2.



Immunohistochemistry (Paraffin-embedded Sections)

Image 3. Formalin-fixed and paraffin embedded bladder cancer labeled with Anti-MCM-2 Polyclonal Antibody, Unconjugated at 1:200 followed by conjugation to the secondary antibody and DAB staining