

Datasheet for ABIN676283
anti-CCL8 antibody (AA 24-99)

3 Images

[Go to Product page](#)

Overview

Quantity:	100 µL
Target:	CCL8
Binding Specificity:	AA 24-99
Reactivity:	Human
Host:	Rabbit
Clonality:	Polyclonal
Conjugate:	This CCL8 antibody is un-conjugated
Application:	ELISA, Immunofluorescence (Cultured Cells) (IF (cc)), Immunofluorescence (Paraffin-embedded Sections) (IF (p)), Immunohistochemistry (Paraffin-embedded Sections) (IHC (p)), Immunohistochemistry (Frozen Sections) (IHC (fro))

Product Details

Immunogen:	KLH conjugated synthetic peptide derived from human CCL8
Isotype:	IgG
Predicted Reactivity:	Human,Rat
Purification:	Purified by Protein A.

Target Details

Target:	CCL8
Alternative Name:	MCP-2/CCL8 (CCL8 Products)

Target Details

Background: Synonyms: HC14, MCP2, MCP-2, SCYA8, SCYA10, C-C motif chemokine 8, Monocyte chemoattractant protein 2, Monocyte chemotactic protein 2, Small-inducible cytokine A8, CCL8
Background: Chemotactic factor that attracts monocytes, lymphocytes, basophils and eosinophils. May play a role in neoplasia and inflammatory host responses. This protein can bind heparin. The processed form MCP-2(6-76) does not show monocyte chemotactic activity, but inhibits the chemotactic effect most predominantly of CCL7, and also of CCL2 and CCL5 and CCL8.

Gene ID: 6355

UniProt: [P80075](#)

Application Details

Application Notes: ELISA 1:500-1000
IHC-P 1:200-400
IHC-F 1:100-500
IF(IHC-P) 1:50-200
IF(IHC-F) 1:50-200
IF(ICC) 1:50-200

Restrictions: For Research Use only

Handling

Format: Liquid

Concentration: 1 µg/µL

Buffer: 0.01M TBS(pH 7.4) with 1 % BSA, 0.02 % Proclin300 and 50 % Glycerol.

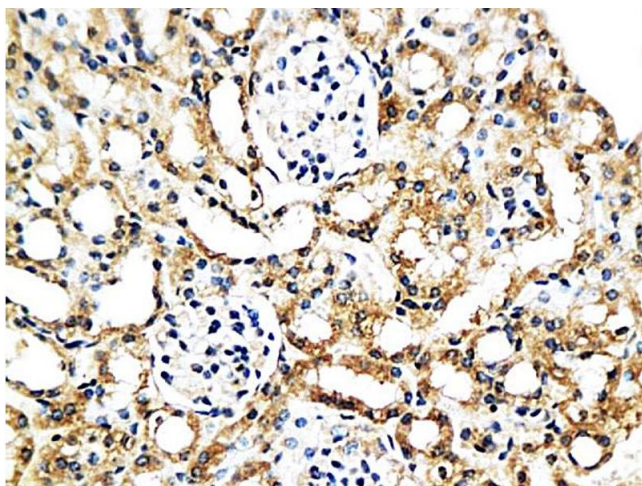
Preservative: ProClin

Precaution of Use: This product contains ProClin: a POISONOUS AND HAZARDOUS SUBSTANCE, which should be handled by trained staff only.

Storage: 4 °C,-20 °C

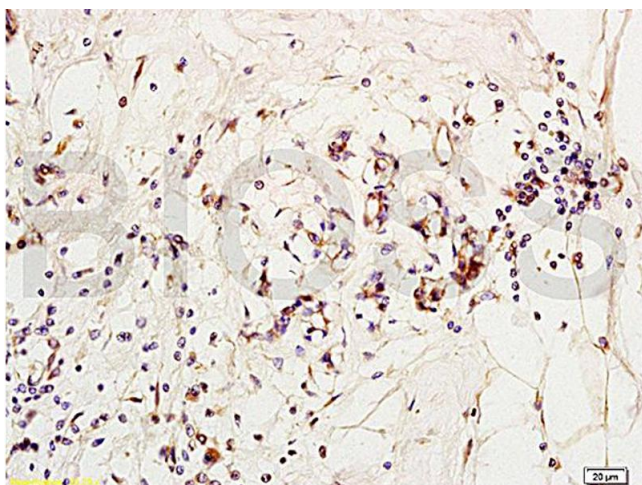
Storage Comment: Shipped at 4°C. Store at -20°C for one year. Avoid repeated freeze/thaw cycles.

Expiry Date: 12 months



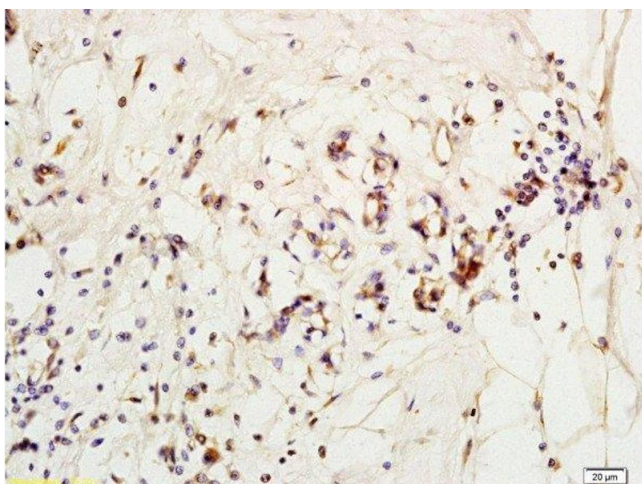
Immunohistochemistry

Image 1. Formalin-fixed and paraffin embedded mouse kidney labeled with Anti-MCP-2 Polyclonal Antibody, Unconjugated (ABIN676283) at 1:200 followed by conjugation to the secondary antibody and DAB staining



Immunohistochemistry

Image 2. Formalin-fixed and paraffin embedded human breast carcinoma labeled with Anti-MCP-2 Polyclonal Antibody, Unconjugated (ABIN676283) at 1:200 followed by conjugation to the secondary antibody and DAB staining



Immunohistochemistry (Paraffin-embedded Sections)

Image 3. Formalin-fixed and paraffin embedded human breast carcinoma labeled with Anti-MCP-2 Polyclonal Antibody, Unconjugated at 1:200 followed by conjugation to the secondary antibody and DAB staining