

Datasheet for ABIN676463
anti-L1CAM antibody (AA 1101-1257)[Go to Product page](#)

2 Images

Overview

Quantity:	100 µL
Target:	L1CAM
Binding Specificity:	AA 1101-1257
Reactivity:	Human, Rat
Host:	Rabbit
Clonality:	Polyclonal
Conjugate:	This L1CAM antibody is un-conjugated
Application:	ELISA, Flow Cytometry (FACS), Immunohistochemistry (Paraffin-embedded Sections) (IHC (p)), Immunofluorescence (Cultured Cells) (IF (cc)), Immunofluorescence (Paraffin-embedded Sections) (IF (p)), Immunohistochemistry (Frozen Sections) (IHC (fro))

Product Details

Immunogen:	KLH conjugated synthetic peptide derived from human CD171
Isotype:	IgG
Cross-Reactivity:	Human, Rat
Predicted Reactivity:	Mouse,Dog,Cow,Pig,Horse,Chicken,Rabbit
Purification:	Purified by Protein A.

Target Details

Target:	L1CAM
---------	-------

Target Details

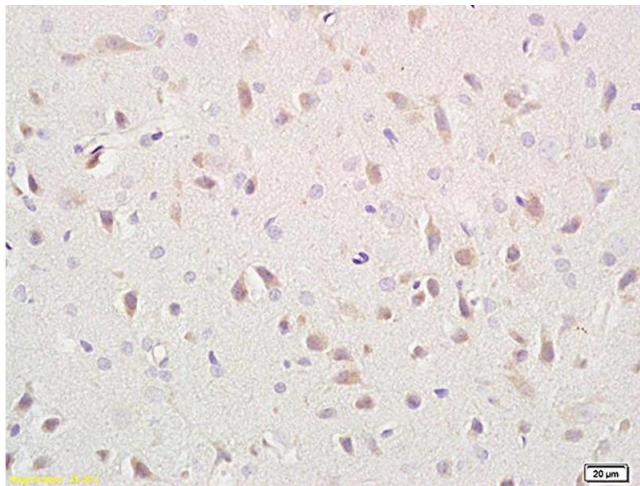
Alternative Name:	CD171/NCAM-L1 (L1CAM Products)
Background:	<p>Synonyms: S10, HSAS, MASA, MIC5, SPG1, CAML1, CD171, HSAS1, N-CAML1, NCAM-L1, N-CAM-L1, Neural cell adhesion molecule L1, L1CAM</p> <p>Background: Cell adhesion molecule with an important role in the development of the nervous system. Involved in neuron-neuron adhesion, neurite fasciculation, outgrowth of neurites, etc. Binds to axonin on neurons.</p>
Gene ID:	3897
UniProt:	P32004
Pathways:	Synaptic Membrane

Application Details

Application Notes:	<p>ELISA 1:500-1000</p> <p>FCM 1:20-100</p> <p>IHC-P 1:200-400</p> <p>IHC-F 1:100-500</p> <p>IF(IHC-P) 1:50-200</p> <p>IF(IHC-F) 1:50-200</p> <p>IF(ICC) 1:50-200</p>
Restrictions:	For Research Use only

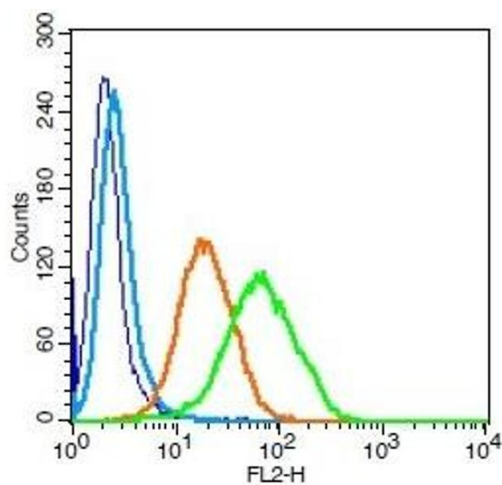
Handling

Format:	Liquid
Concentration:	1 µg/µL
Buffer:	0.01M TBS(pH 7.4) with 1 % BSA, 0.02 % Proclin300 and 50 % Glycerol.
Preservative:	ProClin
Precaution of Use:	This product contains ProClin: a POISONOUS AND HAZARDOUS SUBSTANCE, which should be handled by trained staff only.
Storage:	4 °C,-20 °C
Storage Comment:	Shipped at 4°C. Store at -20°C for one year. Avoid repeated freeze/thaw cycles.
Expiry Date:	12 months



Immunohistochemistry

Image 1. Formalin-fixed and paraffin embedded rat brain labeled with Anti- CD171/NCAM-L1 Polyclonal Antibody, Unconjugated (ABIN676463) at 1:400 followed by conjugation to the secondary antibody and DAB staining



Flow Cytometry

Image 2. Human U937 cells probed with CD171 Polyclonal Antibody, Unconjugated (green) at 1:100 for 30 minutes followed by a PE conjugated secondary antibody compared to unstained cells (blue), secondary only (light blue), and isotype control (orange).