



Datasheet for ABIN676733
anti-LOC543565 antibody (AA 151-261)



[Go to Product page](#)

2 Images

Overview

Quantity:	100 µL
Target:	LOC543565
Binding Specificity:	AA 151-261
Reactivity:	Apple, Plant
Host:	Rabbit
Clonality:	Polyclonal
Conjugate:	This LOC543565 antibody is un-conjugated
Application:	Western Blotting (WB), Immunofluorescence (Cultured Cells) (IF (cc)), Immunofluorescence (Paraffin-embedded Sections) (IF (p)), Immunohistochemistry (Paraffin-embedded Sections) (IHC (p)), ELISA, Immunohistochemistry (Frozen Sections) (IHC (fro))

Product Details

Immunogen:	KLH conjugated synthetic peptide derived from Malus domestica 14-3-3 family protein
Isotype:	IgG
Cross-Reactivity:	Plant
Cross-Reactivity (Details):	Malusdomestica
Purification:	Purified by Protein A.

Target Details

Target:	LOC543565
---------	-----------

Target Details

Alternative Name:	14-3-3 family protein (LOC543565 Products)
Background:	Synonyms: 14-3-3 family protein [Malus domestica]. Background: 14-3-3 family protein
Gene ID:	10971

Application Details

Application Notes:	WB 1:300-5000 ELISA 1:500-1000 IHC-P 1:200-400 IHC-F 1:100-500 IF(IHC-P) 1:50-200 IF(IHC-F) 1:50-200 IF(ICC) 1:50-200
Restrictions:	For Research Use only

Handling

Format:	Liquid
Concentration:	1 µg/µL
Buffer:	0.01M TBS(pH 7.4) with 1 % BSA, 0.02 % Proclin300 and 50 % Glycerol.
Preservative:	ProClin
Precaution of Use:	This product contains ProClin: a POISONOUS AND HAZARDOUS SUBSTANCE, which should be handled by trained staff only.
Storage:	4 °C, -20 °C
Storage Comment:	Shipped at 4°C. Store at -20°C for one year. Avoid repeated freeze/thaw cycles.
Expiry Date:	12 months

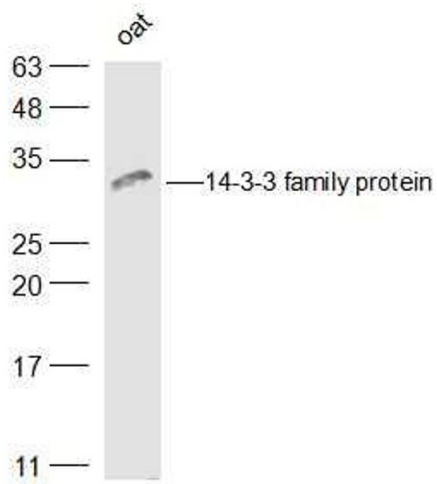
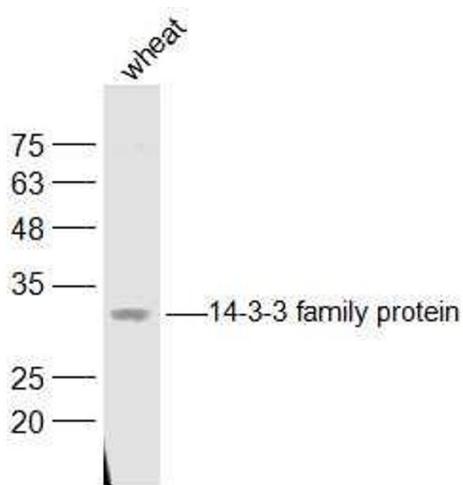


Image 1. Oat lysates probed with 14-3-3 family protein Polyclonal Antibody, Unconjugated at 1:500 dilution and 4°C overnight incubation. Followed by conjugated secondary antibody incubation at 1:10000 for 60 min at 37°C.



Western Blotting

Image 2. Wheat lysates probed with 14-3-3 family protein Polyclonal Antibody, Unconjugated at 1:500 dilution and 4°C overnight incubation. Followed by conjugated secondary antibody incubation at 1:10000 for 60 min at 37°C.