

Datasheet for ABIN676853
anti-CRIM1 antibody (AA 901-1028)

2 Images

1 Publication

[Go to Product page](#)

Overview

Quantity:	100 µL
Target:	CRIM1
Binding Specificity:	AA 901-1028
Reactivity:	Mouse, Rat
Host:	Rabbit
Clonality:	Polyclonal
Conjugate:	This CRIM1 antibody is un-conjugated
Application:	ELISA, Immunohistochemistry (Paraffin-embedded Sections) (IHC (p)), Immunofluorescence (Cultured Cells) (IF (cc)), Immunofluorescence (Paraffin-embedded Sections) (IF (p)), Immunohistochemistry (Frozen Sections) (IHC (fro))

Product Details

Immunogen:	KLH conjugated synthetic peptide derived from mouse CRIM1
Isotype:	IgG
Cross-Reactivity:	Mouse, Rat
Predicted Reactivity:	Human
Purification:	Purified by Protein A.

Target Details

Target:	CRIM1
---------	-------

Target Details

Alternative Name:	CRIM1 (CRIM1 Products)
Background:	Synonyms: AU015004, Cysteine-rich motor neuron 1 protein, CRIM-1, Crim1 Background: May play a role in CNS development by interacting with growth factors implicated in motor neuron differentiation and survival. May play a role in capillary formation and maintenance during angiogenesis. Modulates BMP activity by affecting its processing and delivery to the cell surface (By similarity).
Gene ID:	50766
UniProt:	Q9JLL0
Pathways:	Growth Factor Binding

Application Details

Application Notes:	ELISA 1:500-1000 IHC-P 1:200-400 IHC-F 1:100-500 IF(IHC-P) 1:50-200 IF(IHC-F) 1:50-200 IF(ICC) 1:50-200
Restrictions:	For Research Use only

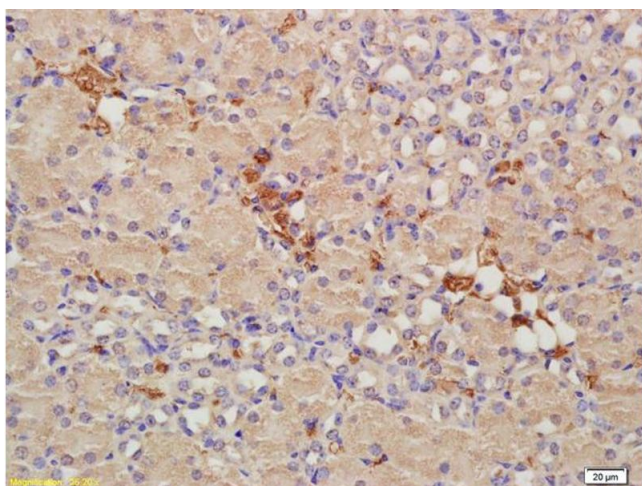
Handling

Format:	Liquid
Concentration:	1 µg/µL
Buffer:	0.01M TBS(pH 7.4) with 1 % BSA, 0.02 % Proclin300 and 50 % Glycerol.
Preservative:	ProClin
Precaution of Use:	This product contains ProClin: a POISONOUS AND HAZARDOUS SUBSTANCE, which should be handled by trained staff only.
Storage:	4 °C,-20 °C
Storage Comment:	Shipped at 4°C. Store at -20°C for one year. Avoid repeated freeze/thaw cycles.
Expiry Date:	12 months

Publications

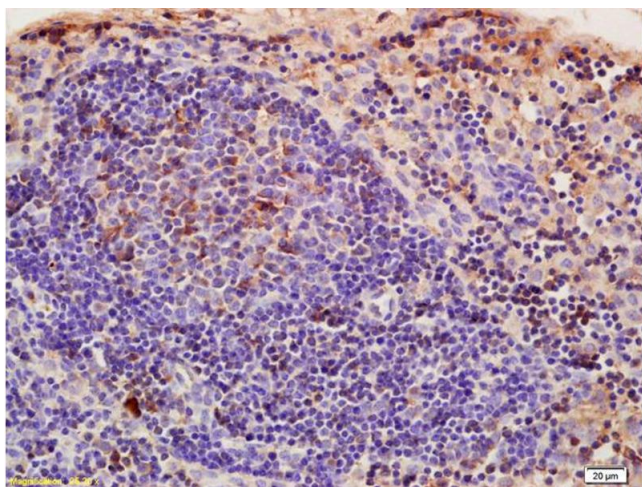
Product cited in: Zeng, Zhang, Yi, Wu, Wan, Tang: "CRIM1, a newfound cancer-related player, regulates the adhesion and migration of lung cancer cells." in: **Growth factors (Chur, Switzerland)**, Vol. 33, Issue 5-6, pp. 384-92, (2016) ([PubMed](#)).

Images



Immunohistochemistry

Image 1. Formalin-fixed and paraffin embedded mouse kidney labeled with Anti-CRIM1 Polyclonal Antibody, Unconjugated (ABIN676853) at 1:200, followed by conjugation to the secondary antibody and DAB staining



Immunohistochemistry

Image 2. Formalin-fixed and paraffin embedded rat pancreatic cancer labeled with Anti-CRIM1 Polyclonal Antibody, Unconjugated (ABIN676853) at 1:200, followed by conjugation to the secondary antibody and DAB staining