



Datasheet for ABIN677168

anti-Beta Lactoglobulin (LGB) (AA 51-130) antibody



[Go to Product page](#)

2 Images

1 Publication

Overview

Quantity:	100 µL
Target:	Beta Lactoglobulin (LGB)
Binding Specificity:	AA 51-130
Reactivity:	Human, Rabbit
Host:	Rabbit
Clonality:	Polyclonal
Conjugate:	Un-conjugated
Application:	Western Blotting (WB), ELISA, Immunofluorescence (Cultured Cells) (IF (cc)), Immunofluorescence (Paraffin-embedded Sections) (IF (p)), Immunohistochemistry (Frozen Sections) (IHC (fro)), Immunohistochemistry (Paraffin-embedded Sections) (IHC (p))

Product Details

Immunogen:	KLH conjugated synthetic peptide derived from bovine Beta-lactoglobulin
Isotype:	IgG
Cross-Reactivity:	Human, Rabbit
Predicted Reactivity:	Cow, Sheep
Purification:	Purified by Protein A.

Target Details

Target:	Beta Lactoglobulin (LGB)
---------	--------------------------

Target Details

Alternative Name: [beta-Lactoglobulin \(LGB Products\)](#)

Background: Synonyms: beta-lactoglobulin precursor, progestagen-associated endometrial protein, Beta lactoglobulin B, Beta-lactoglobulin, Beta-LG, Bos d 5, BLG, LACB_BOVIN, LGB.

Background: Bovine beta-lactoglobulin is the content of the milk in the category of a protein myosin. Protein contained in whole milk (3.7 percent) to 80 % of the casein in the removal of the casein whey protein, 55 % of the beta-lactoglobulin. Access to the crystallization of the isoelectric point = 5.2, the pH in this dual capacity under the main structure. The people in latex-free Beta-lactoglobulin. The beta-lactoglobulin and bov beta-lactoglobulinA-based.

Gene ID: 280838

UniProt: [P02754](#)

Application Details

Application Notes: WB 1:300-5000
ELISA 1:500-1000
IHC-P 1:200-400
IHC-F 1:100-500
IF(IHC-P) 1:50-200
IF(IHC-F) 1:50-200
IF(ICC) 1:50-200

Restrictions: For Research Use only

Handling

Format: Liquid

Concentration: 1 µg/µL

Buffer: 0.01M TBS(pH 7.4) with 1 % BSA, 0.02 % Proclin300 and 50 % Glycerol.

Preservative: ProClin

Precaution of Use: This product contains ProClin: a POISONOUS AND HAZARDOUS SUBSTANCE, which should be handled by trained staff only.

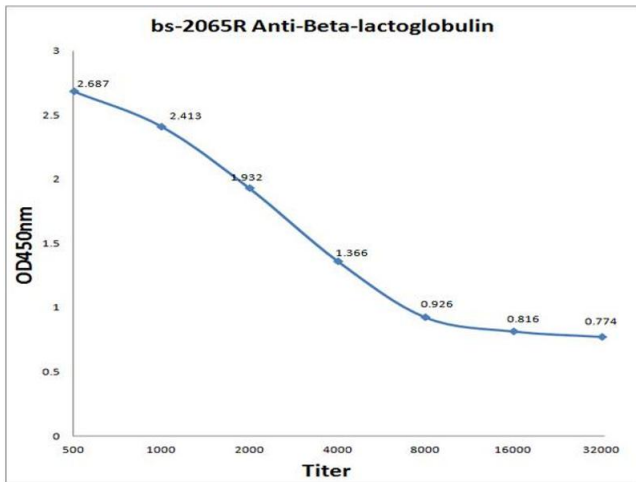
Storage: 4 °C, -20 °C

Storage Comment: Shipped at 4°C. Store at -20°C for one year. Avoid repeated freeze/thaw cycles.

Expiry Date: 12 months

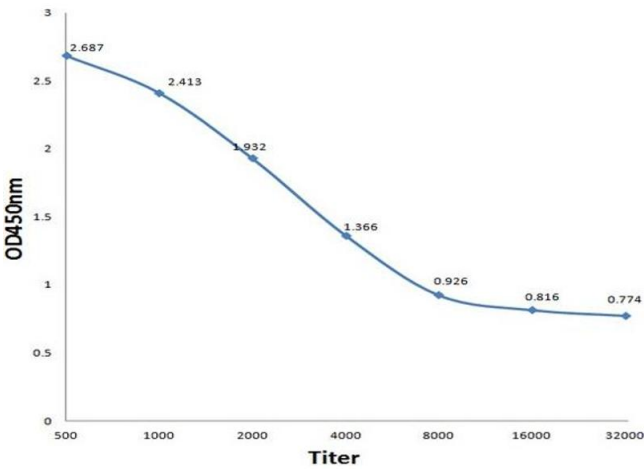
Product cited in: Luo, Wang, Liu, Cui, Wu, Lan, Chen, Liu, Quan, Guo, Zhang: "Generation of TALE nickase-mediated gene-targeted cows expressing human serum albumin in mammary glands." in: **Scientific reports**, Vol. 6, pp. 20657, (2016) ([PubMed](#)).

Images



ELISA

Image 1. Antigen: 0.2 µg/100 µL Primary: Antiserum, 1:500, 1:1000, 1:2000, 1:4000, 1:8000, 1:16000, 1:32000; Secondary: HRP conjugated Goat Anti-Rabbit IgG at 1: 5000; TMB staining; Read the data in MicroplateReader by 450nm



ELISA

Image 2. Antigen: 0.2ug/100ul, Primary: Antiserum, 1:500, 1:1000, 1:2000, 1:4000, 1:8000, 1:16000, 1:32000, Secondary: HRP conjugated Goat Anti-Rabbit IgG at 1: 5000, TMB staining, Read the data in MicroplateReader by 450nm,