



Datasheet for ABIN677573  
**anti-CD248 antibody (AA 251-350)**



[Go to Product page](#)

6 Images

Overview

Quantity:	100 µL
Target:	CD248
Binding Specificity:	AA 251-350
Reactivity:	Human, Mouse
Host:	Rabbit
Clonality:	Polyclonal
Conjugate:	This CD248 antibody is un-conjugated
Application:	Western Blotting (WB), ELISA, Flow Cytometry (FACS), Immunofluorescence (Cultured Cells) (IF (cc)), Immunofluorescence (Paraffin-embedded Sections) (IF (p)), Immunohistochemistry (Paraffin-embedded Sections) (IHC (p)), Immunohistochemistry (Frozen Sections) (IHC (fro))

Product Details

Immunogen:	KLH conjugated synthetic peptide derived from human TEM 1
Isotype:	IgG
Cross-Reactivity:	Human, Mouse
Predicted Reactivity:	Rat,Dog,Cow,Pig,Horse
Purification:	Purified by Protein A.

Target Details

Target:	CD248
---------	-------

## Target Details

---

Alternative Name:	TEM1/CD248 ( <a href="#">CD248 Products</a> )
Background:	<p>Synonyms: TEM1, CD164L1, Endosialin, Tumor endothelial marker 1, CD248</p> <p>Background: The transmembrane glycoprotein Tumor endothelial marker 1 (TEM1) is highly expressed in tumor endothelial cells however it is barely detectable on normal endothelial cells. It is believed to play a role in tumor angiogenesis. It is expressed in stromal fibroblasts, metastatic hepatic lesions and during angiogenesis of corpus luteum formation and wound healing. TEM1 is being investigated as a potential target for cancer treatment.</p>
Gene ID:	57124
UniProt:	<a href="#">Q9HCU0</a>

## Application Details

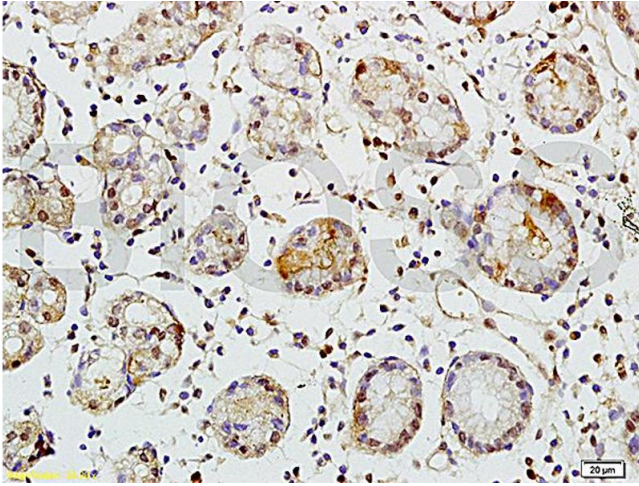
---

Application Notes:	<p>WB 1:300-5000</p> <p>ELISA 1:500-1000</p> <p>FCM 1:20-100</p> <p>IHC-P 1:200-400</p> <p>IHC-F 1:100-500</p> <p>IF(IHC-P) 1:50-200</p> <p>IF(IHC-F) 1:50-200</p> <p>IF(ICC) 1:50-200</p>
Restrictions:	For Research Use only

## Handling

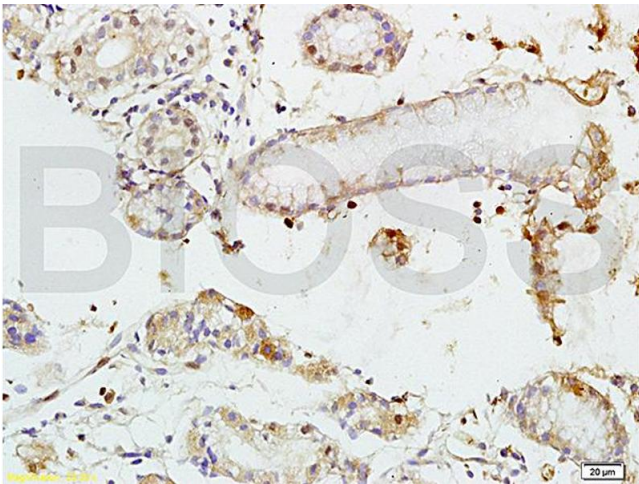
---

Format:	Liquid
Concentration:	1 µg/µL
Buffer:	0.01M TBS( pH 7.4) with 1 % BSA, 0.02 % Proclin300 and 50 % Glycerol.
Preservative:	ProClin
Precaution of Use:	This product contains ProClin: a POISONOUS AND HAZARDOUS SUBSTANCE, which should be handled by trained staff only.
Storage:	4 °C, -20 °C
Storage Comment:	Shipped at 4°C. Store at -20°C for one year. Avoid repeated freeze/thaw cycles.
Expiry Date:	12 months



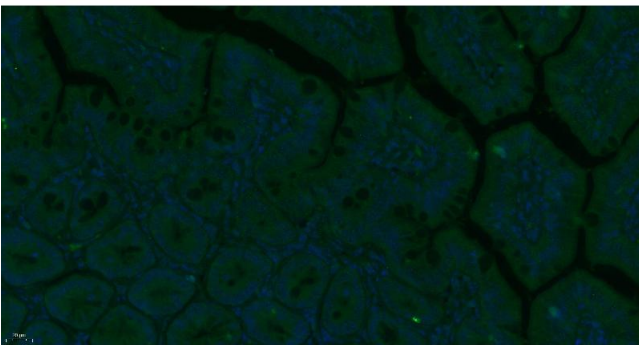
#### Immunohistochemistry

**Image 1.** Formalin-fixed and paraffin embedded human colon carcinoma tissue labeled with Rabbit Anti-TEM1/CD248 Polyclonal Antibody (ABIN677573) at 1:200 followed by conjugation to the secondary antibody and DAB staining.



#### Immunohistochemistry

**Image 2.** Formalin-fixed and paraffin embedded human colon carcinoma tissue labeled with Rabbit Anti-TEM1/CD248 Polyclonal Antibody (ABIN677573) at 1:200 followed by conjugation to the secondary antibody and DAB staining.



#### Immunofluorescence (Paraffin-embedded Sections)

**Image 3.** Paraformaldehyde-fixed, paraffin embedded Mouse small intestine, Antigen retrieval by boiling in sodium citrate buffer (pH6.0) for 15min, Block endogenous peroxidase by 3% hydrogen peroxide for 20 minutes, Blocking buffer (normal goat serum) at 37°C for 30min, Antibody incubation with TEM1/CD248 Polyclonal Antibody, Unconjugated (bs-2101R) at 1:400 overnight at 4°C, followed by a FITC conjugated secondary antibody for 90 minutes, and DAPI for nuclei staining.

Please check the [product details page](#) for more images. Overall 6 images are available for ABIN677573.