

Datasheet for ABIN678098
anti-PKD2 antibody (AA 651-750)[Go to Product page](#)

1 Image

Overview

Quantity:	100 µL
Target:	PKD2
Binding Specificity:	AA 651-750
Reactivity:	Human, Mouse
Host:	Rabbit
Clonality:	Polyclonal
Conjugate:	This PKD2 antibody is un-conjugated
Application:	ELISA, Immunohistochemistry (Paraffin-embedded Sections) (IHC (p)), Immunofluorescence (Cultured Cells) (IF (cc)), Immunofluorescence (Paraffin-embedded Sections) (IF (p)), Immunohistochemistry (Frozen Sections) (IHC (fro))

Product Details

Immunogen:	KLH conjugated synthetic peptide derived from human Polycystin 2
Isotype:	IgG
Specificity:	This antibody may have a minor secondary cross-reactivity towards Polycystin 2-like protein 1 due to a 71 % non-contiguous sequence similarity in the immunogen sequence.
Cross-Reactivity:	Human, Mouse
Predicted Reactivity:	Rat,Dog,Cow,Chicken
Purification:	Purified by Protein A.

Target Details

Target:	PKD2
Alternative Name:	Polycystin 2 (PKD2 Products)
Background:	<p>Synonyms: PC2, PKD4, Pc-2, APKD2, TRPP2, Polycystin-2, Autosomal dominant polycystic kidney disease type II protein, Polycystic kidney disease 2 protein, Polycystwin, R48321, Transient receptor potential cation channel subfamily P member 2, PKD2</p> <p>Background: Functions as a calcium permeable cation channel involved in fluid-flow mechanosensation by the primary cilium in renal epithelium. Together with TRPV4, forms mechano- and thermosensitive channels in cilium (PubMed:18695040). PKD1 and PKD2 may function through a common signaling pathway that is necessary for normal tubulogenesis. Acts as a regulator of cilium length, together with PKD1. The dynamic control of cilium length is essential in the regulation of mechanotransductive signaling. The cilium length response creates a negative feedback loop whereby fluid shear-mediated deflection of the primary cilium, which decreases intracellular cAMP, leads to cilium shortening and thus decreases flow-induced signaling. Also involved in left/right axis specification downstream of nodal flow: forms a complex with PKD1L1 in cilia to facilitate flow detection in left/right patterning (By similarity).</p>
Gene ID:	5311
UniProt:	Q13563
Pathways:	cAMP Metabolic Process , Maintenance of Protein Location , Negative Regulation of Transporter Activity

Application Details

Application Notes:	ELISA 1:500-1000 IHC-P 1:200-400 IHC-F 1:100-500 IF(IHC-P) 1:50-200 IF(IHC-F) 1:50-200 IF(ICC) 1:50-200
Restrictions:	For Research Use only

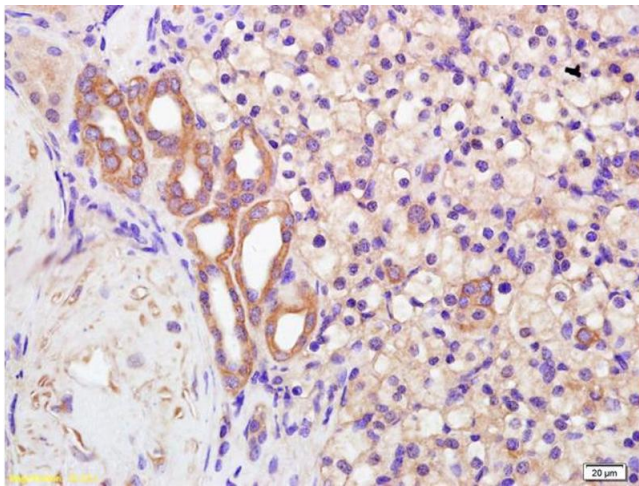
Handling

Format:	Liquid
Concentration:	1 µg/µL

Handling

Buffer:	0.01M TBS(pH 7.4) with 1 % BSA, 0.02 % Proclin300 and 50 % Glycerol.
Preservative:	ProClin
Precaution of Use:	This product contains ProClin: a POISONOUS AND HAZARDOUS SUBSTANCE, which should be handled by trained staff only.
Storage:	4 °C,-20 °C
Storage Comment:	Shipped at 4°C. Store at -20°C for one year. Avoid repeated freeze/thaw cycles.
Expiry Date:	12 months

Images



Immunohistochemistry

Image 1. Formalin-fixed and paraffin embedded human kidney carcinoma labeled with Anti-Polycystin 2 Polyclonal Antibody, Unconjugated (ABIN678098) at 1:200 followed by conjugation to the secondary antibody and DAB staining.