

Datasheet for ABIN678158
anti-DKK1 antibody (AA 201-266)[Go to Product page](#)[2 Images](#)[3 Publications](#)

Overview

Quantity:	100 µL
Target:	DKK1
Binding Specificity:	AA 201-266
Reactivity:	Human, Dog
Host:	Rabbit
Clonality:	Polyclonal
Conjugate:	This DKK1 antibody is un-conjugated
Application:	Western Blotting (WB), ELISA, Immunohistochemistry (Paraffin-embedded Sections) (IHC (p)), Immunofluorescence (Cultured Cells) (IF (cc)), Immunofluorescence (Paraffin-embedded Sections) (IF (p)), Immunohistochemistry (Frozen Sections) (IHC (fro))

Product Details

Immunogen:	KLH conjugated synthetic peptide derived from human DKK1
Isotype:	IgG
Cross-Reactivity:	Dog, Human
Predicted Reactivity:	Mouse,Rat
Purification:	Purified by Protein A.

Target Details

Target:	DKK1
---------	------

Target Details

Alternative Name:	DKK1 (DKK1 Products)
Background:	Synonyms: SK, DKK-1, Dickkopf-related protein 1, Dickkopf-1, hDkk-1, DKK1, UNQ492/PRO18 Background: Antagonizes canonical Wnt signaling by inhibiting LRP5/6 interaction with Wnt and by forming a ternary complex with the transmembrane protein KREMEN that promotes internalization of LRP5/6. DKKs play an important role in vertebrate development, where they locally inhibit Wnt regulated processes such as antero-posterior axial patterning, limb development, somitogenesis and eye formation. In the adult, Dkks are implicated in bone formation and bone disease, cancer and Alzheimer disease.
Gene ID:	22943
UniProt:	O94907
Pathways:	WNT Signaling , Regulation of Muscle Cell Differentiation , Positive Regulation of fat Cell Differentiation

Application Details

Application Notes:	WB 1:300-5000 ELISA 1:500-1000 IHC-P 1:200-400 IHC-F 1:100-500 IF(IHC-P) 1:50-200 IF(IHC-F) 1:50-200 IF(ICC) 1:50-200
Restrictions:	For Research Use only

Handling

Format:	Liquid
Concentration:	1 µg/µL
Buffer:	0.01M TBS(pH 7.4) with 1 % BSA, 0.02 % Proclin300 and 50 % Glycerol.
Preservative:	ProClin
Precaution of Use:	This product contains ProClin: a POISONOUS AND HAZARDOUS SUBSTANCE, which should be handled by trained staff only.
Storage:	4 °C, -20 °C

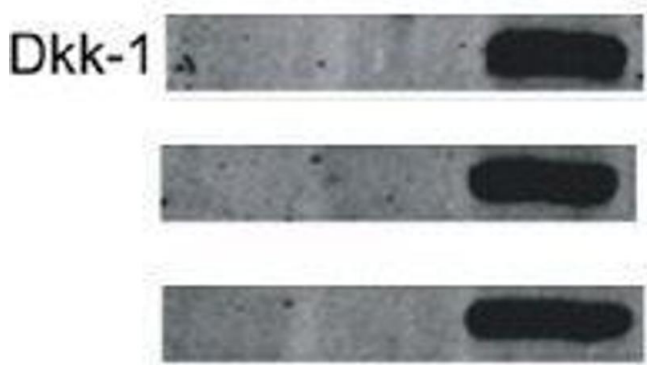
Handling

Storage Comment:	Shipped at 4°C. Store at -20°C for one year. Avoid repeated freeze/thaw cycles.
Expiry Date:	12 months

Publications

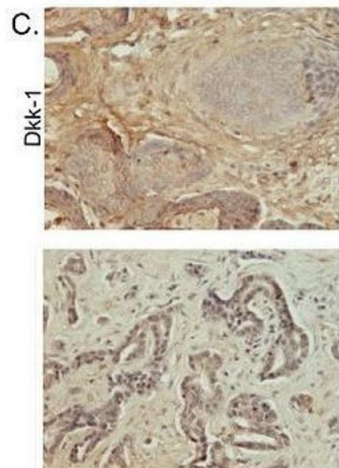
Product cited in:	Duan, Yan, Chen, Wu, Han, Guo, Qiao: "TET1 inhibits EMT of ovarian cancer cells through activating Wnt/ β -catenin signaling inhibitors DKK1 and SFRP2." in: Gynecologic oncology , Vol. 147, Issue 2, pp. 408-417, (2017) (PubMed).
	Lu, Duan, Zhang, Wu, Wang: "Expression of Wnt3a, Wnt10b, β -catenin and DKK1 in periodontium during orthodontic tooth movement in rats." in: Acta odontologica Scandinavica , pp. 1-7, (2015) (PubMed).
	Król, Mucha, Majchrzak, Homa, Bulkowska, Majewska, Gajewska, Pietrzak, Perszko, Romanowska, Pawłowski, Manuali, Hellmen, Motyl: "Macrophages mediate a switch between canonical and non-canonical Wnt pathways in canine mammary tumors." in: PLoS ONE , Vol. 9, Issue 1, pp. e83995, (2014) (PubMed).

Images



Western Blotting

Image 1. Image kindly provided by Dr. Magdalena Krol. Control tumor cells, tumor cells grown in macrophage-conditioned medium, tumor cells sorted from co-culture with macrophages, and macrophages from monocultures and sorted from co-culture with tumor cells were analyzed. Total protein concentrations in lysates were determined using a Bio-Rad protein assay. Proteins (50 mg) were resolved using SDS-PAGE and transferred onto PVDF membranes. The membranes were then blocked with 5% non-fat dry milk in TBS buffer containing 0.5% Tween 20. The membranes were then incubated overnight with the primary Rabbit Anti-DKK1 Polyclonal Antibody at 1:100 dilution. Subsequently, the membranes were washed three



times in TBS containing 0.5% Tween 20 and incubated for 1 h at room temperature with secondary antibodies conjugated with the appropriate infrared (IR) fluorophore IRDyeH 800 CW or IRDyeH 680 RD at a dilution of 1:5000.

Immunohistochemistry (Paraffin-embedded Sections)

Image 2. Image kindly submitted by Dr. Magdalena Krol. Formalin-fixed and paraffin embedded canine mammary tumor labeled with Rabbit Anti-DKK1 Polyclonal Antibody, Unconjugated at 1:200 followed by conjugation to the secondary antibody and DAB staining