

Datasheet for ABIN678308
anti-Olfactomedin 1 antibody (AA 101-200)[Go to Product page](#)

2 Images

Overview

Quantity:	100 µL
Target:	Olfactomedin 1 (OLFM1)
Binding Specificity:	AA 101-200
Reactivity:	Human, Rat
Host:	Rabbit
Clonality:	Polyclonal
Conjugate:	This Olfactomedin 1 antibody is un-conjugated
Application:	Western Blotting (WB), ELISA, Immunofluorescence (Cultured Cells) (IF (cc)), Immunofluorescence (Paraffin-embedded Sections) (IF (p)), Immunohistochemistry (Paraffin- embedded Sections) (IHC (p)), Immunohistochemistry (Frozen Sections) (IHC (fro))

Product Details

Immunogen:	KLH conjugated synthetic peptide derived from human Noelin
Isotype:	IgG
Cross-Reactivity:	Human, Rat
Predicted Reactivity:	Mouse,Horse,Chicken
Purification:	Purified by Protein A.

Target Details

Target:	Olfactomedin 1 (OLFM1)
---------	------------------------

Target Details

Alternative Name: Noelin ([OLFM1 Products](#))

Background: Synonyms: AMY, NOE1, OlfA, NOELIN1, Noelin, Neuronal olfactomedin-related ER localized protein, Olfactomedin-1, OLFM1, NOEL1

Background: The Olfactomedin family comprises a diverse group of secreted glycoproteins, which includes OLFM1 (Noelin-1), OLFM2 (Noelin-2), OLFM3 (Noelin-3), OLFM4 (Noelin-4), tiarin, pancortin, gliomedin and mycocilin. These proteins are implicated in the development of the nervous system. Specifically, OLFM1 and OLFM2 expression is observed in the neural plate and neural crest, as well as in the cranial ganglia in mouse at E8-10, and later in brain tissue and in the zone of polarizing activity in the limb. Overexpression of OLFM1 causes an excess of neural crest emigrations and prolonged neural crest production. OLFM2 participates in the regulation of the development of the anterior nervous system. An Arg144Gln mutation in OLFM2 has been implicated as a possible cause for open-angle glaucoma (OAG).

Gene ID: 10439

UniProt: [Q99784](#)

Application Details

Application Notes: WB 1:300-5000
ELISA 1:500-1000
IHC-P 1:200-400
IHC-F 1:100-500
IF(IHC-P) 1:50-200
IF(IHC-F) 1:50-200
IF(ICC) 1:50-200

Restrictions: For Research Use only

Handling

Format: Liquid

Concentration: 1 µg/µL

Buffer: 0.01M TBS(pH 7.4) with 1 % BSA, 0.02 % Proclin300 and 50 % Glycerol.

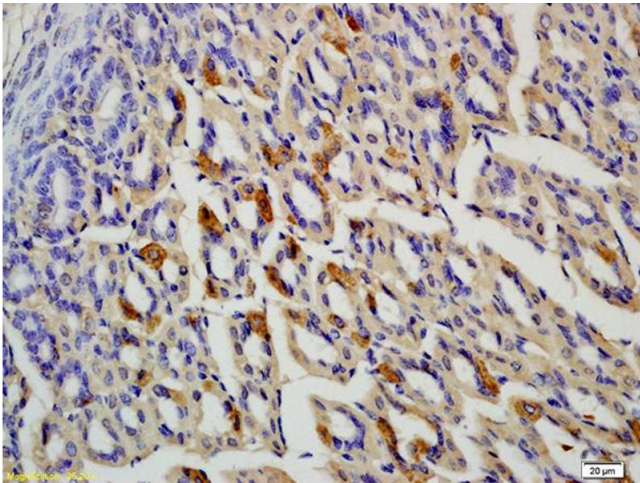
Preservative: ProClin

Precaution of Use: This product contains ProClin: a POISONOUS AND HAZARDOUS SUBSTANCE, which should be handled by trained staff only.

Handling

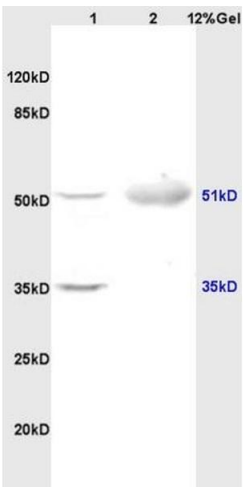
Storage:	4 °C,-20 °C
Storage Comment:	Shipped at 4°C. Store at -20°C for one year. Avoid repeated freeze/thaw cycles.
Expiry Date:	12 months

Images



Immunohistochemistry

Image 1. Formalin-fixed and paraffin embedded rat colon labeled with Anti-OLFM1 Polyclonal Antibody, Unconjugated (ABIN678308) at 1:200 followed by conjugation to the secondary antibody and DAB staining



SDS-PAGE

Image 2. Lane 1: rat brain lysates Lane 2: human colon carcinoma lysates probed with Anti OLFM1/Noelin Polyclonal Antibody, Unconjugated (ABIN678308) at 1:200 in 4 °C. Followed by conjugation to secondary antibody at 1:3000 90min in 37 °C. Predicted band 51kD. Observed band size: 35kD, 51kD.