

Datasheet for ABIN678368

anti-Glypican 6 antibody (AA 351-450)[Go to Product page](#)**1** Image

Overview

Quantity:	100 µL
Target:	Glypican 6 (GPC6)
Binding Specificity:	AA 351-450
Reactivity:	Human
Host:	Rabbit
Clonality:	Polyclonal
Conjugate:	This Glypican 6 antibody is un-conjugated
Application:	ELISA, Flow Cytometry (FACS), Immunofluorescence (Cultured Cells) (IF (cc)), Immunofluorescence (Paraffin-embedded Sections) (IF (p)), Immunohistochemistry (Paraffin-embedded Sections) (IHC (p)), Immunohistochemistry (Frozen Sections) (IHC (fro))

Product Details

Immunogen:	KLH conjugated synthetic peptide derived from human Glypican 6
Isotype:	IgG
Cross-Reactivity:	Human
Predicted Reactivity:	Mouse,Rat,Dog,Horse,Rabbit
Purification:	Purified by Protein A.

Target Details

Target:	Glypican 6 (GPC6)
---------	-------------------

Target Details

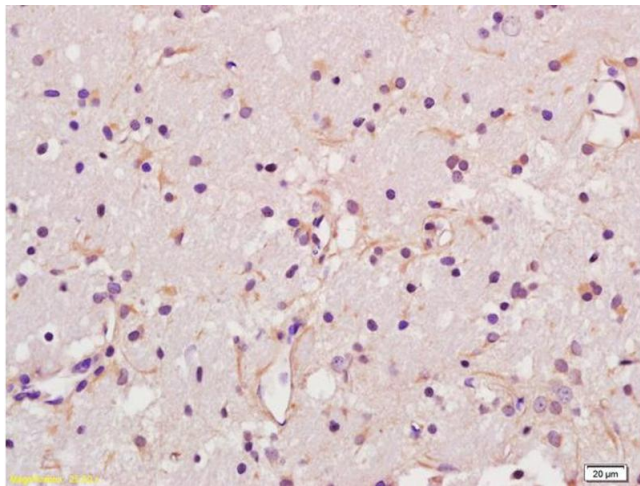
Alternative Name:	Glypican 6 (GPC6 Products)
Background:	Synonyms: OMIMD1, Glypican-6, GPC6, UNQ369/PRO705 Background: Cell surface proteoglycan that bears heparan sulfate. Putative cell surface coreceptor for growth factors, extracellular matrix proteins, proteases and anti-proteases (By similarity). Enhances migration and invasion of cancer cells through WNT5A signaling.
Gene ID:	10082
UniProt:	Q9Y625
Pathways:	Glycosaminoglycan Metabolic Process

Application Details

Application Notes:	ELISA 1:500-1000 FCM 1:20-100 IHC-P 1:200-400 IHC-F 1:100-500 IF(IHC-P) 1:50-200 IF(IHC-F) 1:50-200 IF(ICC) 1:50-200
Restrictions:	For Research Use only

Handling

Format:	Liquid
Concentration:	1 µg/µL
Buffer:	0.01M TBS(pH 7.4) with 1 % BSA, 0.02 % Proclin300 and 50 % Glycerol.
Preservative:	ProClin
Precaution of Use:	This product contains ProClin: a POISONOUS AND HAZARDOUS SUBSTANCE, which should be handled by trained staff only.
Storage:	4 °C,-20 °C
Storage Comment:	Shipped at 4°C. Store at -20°C for one year. Avoid repeated freeze/thaw cycles.
Expiry Date:	12 months



Immunohistochemistry

Image 1. Formalin-fixed and paraffin embedded rat brain labeled with Anti-Glypican 6 Polyclonal Antibody, Unconjugated (ABIN678368) at 1:200 followed by conjugation to the secondary antibody and DAB staining