

Datasheet for ABIN678488

anti-Cytokeratin 1 antibody (AA 101-200)

4 Images

1 Publication



[Go to Product page](#)

Overview

Quantity:	100 µL
Target:	Cytokeratin 1 (KRT1)
Binding Specificity:	AA 101-200
Reactivity:	Human, Mouse, Horse
Host:	Rabbit
Clonality:	Polyclonal
Conjugate:	This Cytokeratin 1 antibody is un-conjugated
Application:	Western Blotting (WB), ELISA, Flow Cytometry (FACS), Immunohistochemistry (Paraffin-embedded Sections) (IHC (p)), Immunohistochemistry (Frozen Sections) (IHC (fro)), Immunofluorescence (Paraffin-embedded Sections) (IF (p)), Immunofluorescence (Cultured Cells) (IF (cc))

Product Details

Immunogen:	KLH conjugated synthetic peptide derived from mouse Cytokeratin 19.
Isotype:	IgG
Cross-Reactivity:	Horse, Human, Mouse
Predicted Reactivity:	Rat,Dog,Cow,Pig,Chicken,Rabbit
Purification:	Purified by Protein A.

Target Details

Target:	Cytokeratin 1 (KRT1)
---------	----------------------

Target Details

Alternative Name: Cytokeratin ([KRT1 Products](#))

Background: Synonyms: CK, pan-Cytokeratin, Keratin, type I cytoskeletal 19, Cytokeratin-19, CK19, Keratin-19, K19, Krt19, Krt1-19

Background: Cytokeratins, a group comprising at least 29 different proteins, are characteristic of epithelial and trichocytic cells. Cytokeratins 1, 4, 5, 6, and 8 are members of the type II neutral to basic subfamily. Antibody to cytokeratins are specific markers of epithelial cell differentiation and have been widely used as tools in tumor identification and classification. Anti Pan Cytokeratin (mixture) is a broadly reactive reagent, which recognizes epitopes present in most human epithelial tissues. It facilitates typing of normal, metaplastic and neoplastic cells. Synergy between the various components results in staining amplification. This enables identification of cells, which would otherwise be stained only marginally. The mixture may aid in the discrimination of carcinomas and nonepithelial tumors such as sarcomas, lymphomas and neural tumors. It is also useful in detecting micrometastases in lymph nodes, bone marrow and other tissues and for determining the origin of poorly differentiated tumors. There are two types of cytokeratins the acidic type I cytokeratins and the basic or neutral type II cytokeratins. Cytokeratins are usually found in pairs comprising a type I cytokeratin and a type II cytokeratin. Usually the type II cytokeratins are 8kD larger than their type I counterparts.

Gene ID: 16669

UniProt: [P19001](#)

Application Details

Application Notes: WB 1:300-5000
ELISA 1:500-1000
FCM 1:20-100
IHC-P 1:200-400
IHC-F 1:100-500
IF(IHC-P) 1:50-200
IF(IHC-F) 1:50-200
IF(ICC) 1:50-200

Restrictions: For Research Use only

Handling

Format: Liquid

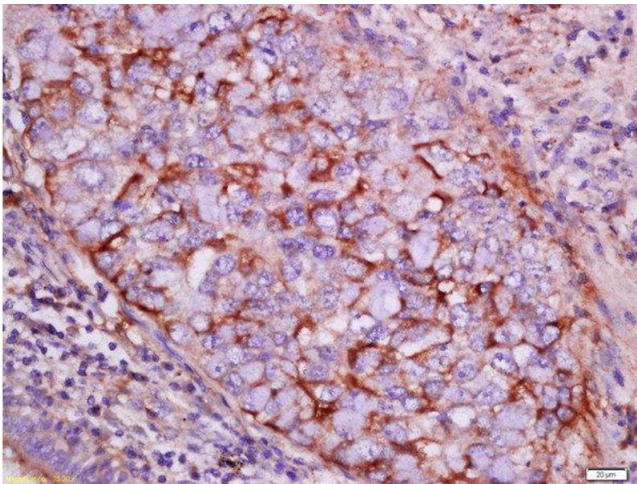
Handling

Concentration:	1 µg/µL
Buffer:	0.01M TBS(pH 7.4) with 1 % BSA, 0.02 % Proclin300 and 50 % Glycerol.
Preservative:	ProClin
Precaution of Use:	This product contains ProClin: a POISONOUS AND HAZARDOUS SUBSTANCE, which should be handled by trained staff only.
Storage:	4 °C,-20 °C
Storage Comment:	Shipped at 4°C. Store at -20°C for one year. Avoid repeated freeze/thaw cycles.
Expiry Date:	12 months

Publications

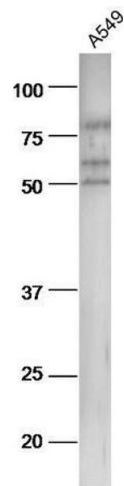
Product cited in:	Chen, Shi, Shu, Xie, Yang, Zhang, Ruan, Lin, Lin, Shen, Zhang, Feng, Xie: "The effect of porcine ADM to improve the burn wound healing." in: International journal of clinical and experimental pathology , Vol. 6, Issue 11, pp. 2280-91, (2013) (PubMed).
-------------------	--

Images



Immunohistochemistry (Paraffin-embedded Sections)

Image 1. Formalin-fixed and paraffin embedded human lung carcinoma labeled with Rabbit Anti-pan-Cytokeratin Polyclonal Antibody, Unconjugated at 1:200 followed by conjugation to the secondary antibody and DAB staining



Western Blotting

Image 2. A549 cell lysates probed with Anti-pan-Cytokeratin Polyclonal Antibody, Unconjugated at 1:5000 90min in 37°C.



Western Blotting

Image 3. Mouse stomach lysates probed with Anti-pan-Cytokeratin Polyclonal Antibody, Unconjugated at 1:5000 90min in 37°C.

Please check the [product details page](#) for more images. Overall 4 images are available for ABIN678488.