

Datasheet for ABIN678563  
**anti-ARHGEF2 antibody (pSer886)**[Go to Product page](#)

## 1 Image

## Overview

Quantity:	100 µL
Target:	ARHGEF2
Binding Specificity:	pSer886
Reactivity:	Human
Host:	Rabbit
Clonality:	Polyclonal
Conjugate:	This ARHGEF2 antibody is un-conjugated
Application:	Western Blotting (WB), ELISA, Immunofluorescence (Cultured Cells) (IF (cc)), Immunofluorescence (Paraffin-embedded Sections) (IF (p)), Immunohistochemistry (Paraffin-embedded Sections) (IHC (p)), Immunohistochemistry (Frozen Sections) (IHC (fro))

## Product Details

Immunogen:	KLH conjugated synthetic phosphopeptide derived from human Arhgef2 around the phosphorylation site of Ser886
Isotype:	IgG
Cross-Reactivity:	Human
Predicted Reactivity:	Mouse,Rat,Dog,Cow,Pig,Horse,Rabbit
Purification:	Purified by Protein A.

## Target Details

Target:	ARHGEF2
---------	---------

## Target Details

Alternative Name:	GEF H1 ( <a href="#">ARHGEF2 Products</a> )
Background:	<p>Synonyms: GEF H1phospho S886, Arhgef2Ser886, Lbcl1, Lfc, mKIAA0651, AA408978, ARHG2, ARHGEF 2, ARHGEF-2, ARHGEF2, GEF, GEF H1, GEF-H1, GEFH1, LFP40, MGC95068, P40, Prolerating cell nucleolar antigen p40, Protein GEF-H1, rho/rac guanine nucleotide exchange factor GEF 2, rho/rac guanine nucleotide exchange factor 2, rho/rac guanine nucleotide exchange factor.</p> <p>Background: GEF-H1 is a Rho guanine nucleotide exchange factor that localizes to microtubules and regulates Rho activity in response to microtubule destabilization (loss of interaction between GEF-H1 and microtubules leads to activation of Rho). This protein has also been shown to localize to tight junctions and modulate polarized cell permeability.</p>
Gene ID:	9181
Pathways:	<a href="#">Negative Regulation of intrinsic apoptotic Signaling</a>

## Application Details

Application Notes:	WB 1:300-5000 ELISA 1:500-1000 IHC-P 1:200-400 IHC-F 1:100-500 IF(IHC-P) 1:50-200 IF(IHC-F) 1:50-200 IF(ICC) 1:50-200
Restrictions:	For Research Use only

## Handling

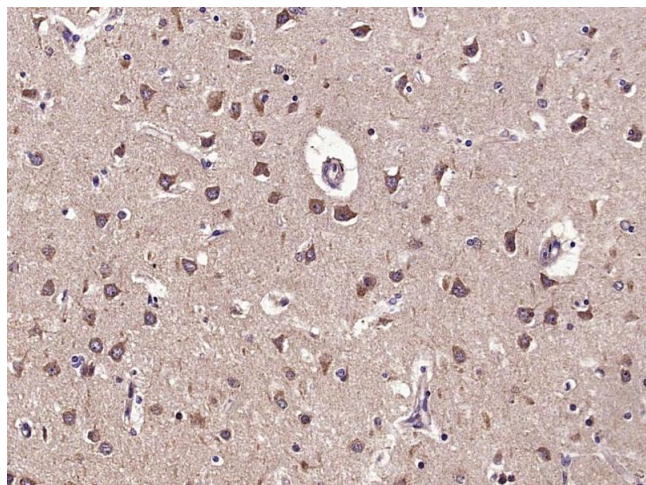
Format:	Liquid
Concentration:	1 µg/µL
Buffer:	0.01M TBS( pH 7.4) with 1 % BSA, 0.02 % Proclin300 and 50 % Glycerol.
Preservative:	ProClin
Precaution of Use:	This product contains ProClin: a POISONOUS AND HAZARDOUS SUBSTANCE, which should be handled by trained staff only.
Storage:	4 °C,-20 °C

## Handling

Storage Comment: Shipped at 4°C. Store at -20°C for one year. Avoid repeated freeze/thaw cycles.

Expiry Date: 12 months

## Images



### Immunohistochemistry (Paraffin-embedded Sections)

**Image 1.** Paraformaldehyde-fixed, paraffin embedded Human brain glioma Antigen retrieval by boiling in sodium citrate buffer (pH6.0) for 15min Block endogenous peroxidase by 3% hydrogen peroxide for 20 minutes Blocking buffer (normal goat serum) at 37°C for 30min Antibody incubation with GEF H1 (Ser886) Polyclonal Antibody, Unconjugated at 1:400 overnight at 4°C, DAB staining.