



[Go to Product page](#)

Datasheet for ABIN678653

anti-CXCR3 antibody (AA 301-367)

4 Images

5 Publications

Overview

Quantity:	100 µL
Target:	CXCR3
Binding Specificity:	AA 301-367
Reactivity:	Human, Mouse, Rat
Host:	Rabbit
Clonality:	Polyclonal
Conjugate:	This CXCR3 antibody is un-conjugated
Application:	Western Blotting (WB)

Product Details

Immunogen:	KLH conjugated synthetic peptide derived from mouse CXCR3
Isotype:	IgG
Cross-Reactivity:	Human, Mouse, Rat
Predicted Reactivity:	Dog,Cow,Pig,Rabbit,Guinea Pig
Purification:	Purified by Protein A.

Target Details

Target:	CXCR3
Alternative Name:	CXCR3/CD183 (CXCR3 Products)
Background:	Synonyms: Cd183, Cmkar3, C-X-C chemokine receptor type 3, CXCR-R3, CXCR-3, Interferon-

Target Details

inducible protein 1 receptor, IP-1 receptor, Cxcr3

Background: Receptor for the C-X-C chemokine CXCL9, CXCL1 and CXCL11 and mediates the proliferation, survival and angiogenic activity of mesangial cells through a heterotrimeric G-protein signaling pathway. Probably promotes cell chemotaxis response (By similarity). Binds to CCL21.

Gene ID: 12766

UniProt: [O88410](#)

Application Details

Application Notes: WB 1:300-5000
FCM 1:20-100
IHC-P 1:200-400
IF(ICC) 1:50-200

Restrictions: For Research Use only

Handling

Format: Liquid

Concentration: 1 µg/µL

Buffer: 0.01M TBS(pH 7.4) with 1 % BSA, 0.02 % Proclin300 and 50 % Glycerol.

Preservative: ProClin

Precaution of Use: This product contains ProClin: a POISONOUS AND HAZARDOUS SUBSTANCE, which should be handled by trained staff only.

Storage: 4 °C, -20 °C

Storage Comment: Shipped at 4°C. Store at -20°C for one year. Avoid repeated freeze/thaw cycles.

Expiry Date: 12 months

Publications

Product cited in: Wang, Tian, Wang, Wei, Wu, Wang, Wang, Yang, Ji, Li: "Anti-inflammatory and retinal protective effects of capsaicin on ischaemia-induced injuries through the release of endogenous somatostatin." in: **Clinical and experimental pharmacology & physiology**, Vol. 44, Issue 7, pp. 803-814, (2017) ([PubMed](#)).

Ge, Li, Jiang, You, Liu, Zhong, Huang, Xing: "Integration of nondegradable polystyrene and degradable gelatin in a core-sheath nanofibrous patch for pelvic reconstruction." in:

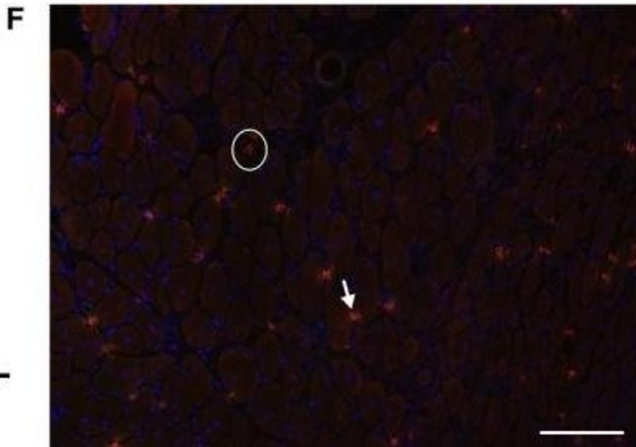
International journal of nanomedicine, Vol. 10, pp. 3193-201, (2015) ([PubMed](#)).

Saxena, Bujak, Frunza, Dobaczewski, Gonzalez-Quesada, Lu, Gerard, Frangogiannis: "CXCR3-independent actions of the CXC chemokine CXCL10 in the infarcted myocardium and in isolated cardiac fibroblasts are mediated through proteoglycans." in: **Cardiovascular research**, Vol. 103, Issue 2, pp. 217-27, (2014) ([PubMed](#)).

Zhang, Fei, Gao, Liu, Zhang: "The role of CXCR3 in the induction of primary biliary cirrhosis." in: **Clinical & developmental immunology**, Vol. 2011, pp. 564062, (2011) ([PubMed](#)).

Burgess: "Motor control and the role of occupational therapy: past, present, and future." in: **The American journal of occupational therapy : official publication of the American Occupational Therapy Association**, Vol. 43, Issue 5, pp. 345-8, (1989) ([PubMed](#)).

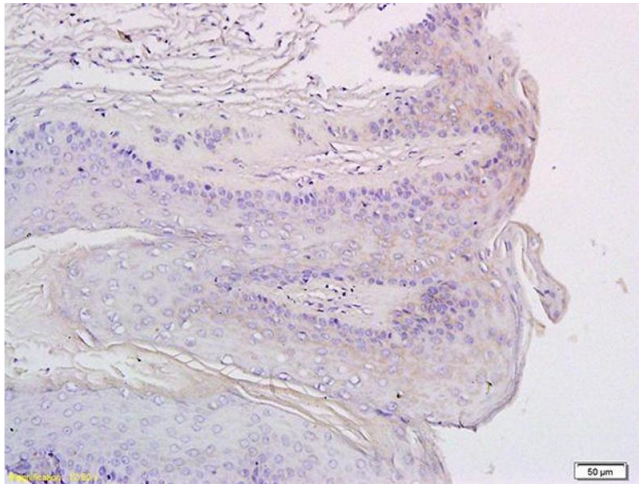
Images



Immunofluorescence (Paraffin-embedded Sections)

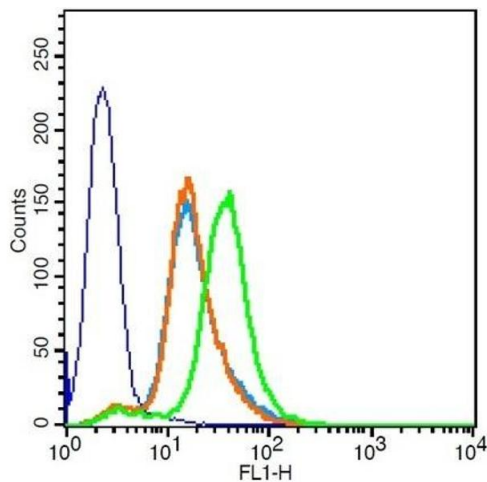
Image 1. (A) T cells (CD3+ cells) were increased at 2 and 7 days postinjury (DPI) compared to 14 DPI (*, $P < 0.05$) in injured muscles of both wild-type (WT) and CXCL10 knockout (KO) mice. (B) A representative micrograph of a T-cell stain (Red = CD3, Blue = DNA) in a WT mouse at 7 DPI. Arrows point out examples of CD3-positive cells. (C) CXCR3-positive cells were increased at 2 and 7 DPI compared to 14 DPI (* $P < 0.05$) in both genotypes. (D) A representative micrograph of CXCR3 (green) stain in a WT mouse at 7 DPI. Arrows mark examples of CXCR3-positive cells. (E) Approximately 50 % of the T cells (CD3 cells) were CXCR3 positive (the CXCL10 receptor). No differences were observed between genotypes or between 2 and 7 DPI. (F) A merged image of panel B and D. The arrow points out an

example a cell positive for both CD3 and CXCR3. The circle shows a CD3-positive, CXCR3-negative cell. Data are mean \pm SD. Scale bar is 100 μ m. n = 4-6 per experimental condition. - figure provided by CiteAb. Source: PMID29696819



Immunohistochemistry

Image 2. Formalin-fixed and paraffin embedded rat exfoliated cells labeled with Anti-CXCR3 Polyclonal Antibody, Unconjugated (ABIN678653) at 1:200 followed by conjugation to the secondary antibody and DAB staining



Flow Cytometry

Image 3. HCCLM3 cells probed with Rabbit Anti-CXCR3 Polyclonal Antibody, Unconjugated) at 1:100 for 30 minutes followed by incubation with a conjugated secondary -FITC) (green) for 30 minutes compared to control cells (blue), secondary only (light blue) and isotype control (orange).

Please check the [product details page](#) for more images. Overall 4 images are available for ABIN678653.