



Datasheet for ABIN679538

## anti-PKC epsilon antibody (AA 631-737)



[Go to Product page](#)

6 Images

2 Publications

### Overview

Quantity:	100 µL
Target:	PKC epsilon (PRKCE)
Binding Specificity:	AA 631-737
Reactivity:	Human, Rat
Host:	Rabbit
Clonality:	Polyclonal
Conjugate:	This PKC epsilon antibody is un-conjugated
Application:	Western Blotting (WB), ELISA, Immunofluorescence (Cultured Cells) (IF (cc)), Immunofluorescence (Paraffin-embedded Sections) (IF (p)), Immunocytochemistry (ICC), Immunohistochemistry (Paraffin-embedded Sections) (IHC (p)), Immunohistochemistry (Frozen Sections) (IHC (fro))

### Product Details

Immunogen:	KLH conjugated synthetic peptide derived from human PKCE (AGC-kinase C-terminal)
Isotype:	IgG
Cross-Reactivity:	Human, Rat
Predicted Reactivity:	Mouse,Dog,Cow,Pig,Horse,Chicken,Rabbit
Purification:	Purified by Protein A.

### Target Details

Target:	PKC epsilon (PRKCE)
---------	---------------------

## Target Details

---

Alternative Name: PKC epsilon ([PRKCE Products](#))

---

Background: Synonyms: PKCE, nPKC-epsilon, Protein kinase C epsilon type, PRKCE  
Background: Protein kinase C (PKC) is a family of serine- and threonine-specific protein kinases that can be activated by calcium and the second messenger diacylglycerol. PKC family members phosphorylate a wide variety of protein targets and are known to be involved in diverse cellular signaling pathways. PKC family members also serve as major receptors for phorbol esters, a class of tumor promoters. Each member of the PKC family has a specific expression profile and is believed to play a distinct role in cells. The protein encoded by this gene is one of the PKC family members. This kinase has been shown to be involved in many different cellular functions, such as neuron channel activation, apoptosis, cardioprotection from ischemia, heat shock response, as well as insulin exocytosis. Knockout studies in mice suggest that this kinase is important for lipopolysaccharide (LPS)-mediated signaling in activated macrophages and may also play a role in controlling anxiety-like behavior. [provided by RefSeq, Jul 2008]

---

Gene ID: 5581

---

UniProt: [Q02156](#)

---

Pathways: [TCR Signaling](#), [EGFR Signaling Pathway](#), [Neurotrophin Signaling Pathway](#), [Positive Regulation of Peptide Hormone Secretion](#), [Activation of Innate immune Response](#), [Cellular Response to Molecule of Bacterial Origin](#), [Regulation of Actin Filament Polymerization](#), [Myometrial Relaxation and Contraction](#), [Regulation of Carbohydrate Metabolic Process](#), [Interaction of EGFR with phospholipase C-gamma](#), [Thromboxane A2 Receptor Signaling](#)

---

## Application Details

---

Application Notes: WB 1:300-5000  
ELISA 1:500-1000  
IHC-P 1:200-400  
IHC-F 1:100-500  
IF(IHC-P) 1:50-200  
IF(IHC-F) 1:50-200  
IF(ICC) 1:50-200  
ICC 1:100-500

---

Restrictions: For Research Use only

---

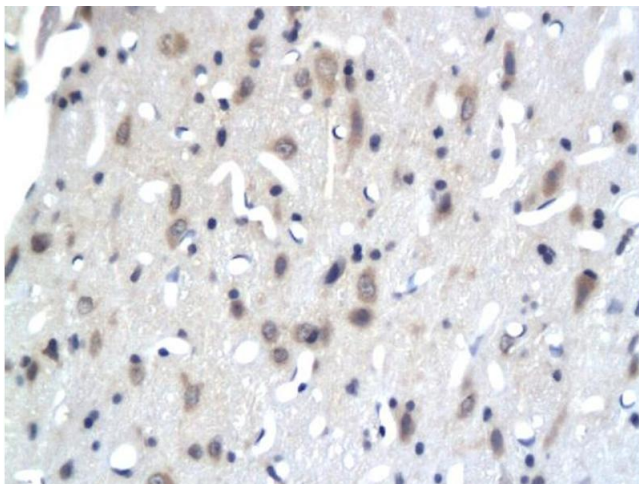
## Handling

Format:	Liquid
Concentration:	1 µg/µL
Buffer:	0.01M TBS( pH 7.4) with 1 % BSA, 0.02 % Proclin300 and 50 % Glycerol.
Preservative:	ProClin
Precaution of Use:	This product contains ProClin: a POISONOUS AND HAZARDOUS SUBSTANCE, which should be handled by trained staff only.
Storage:	4 °C,-20 °C
Storage Comment:	Shipped at 4°C. Store at -20°C for one year. Avoid repeated freeze/thaw cycles.
Expiry Date:	12 months

## Publications

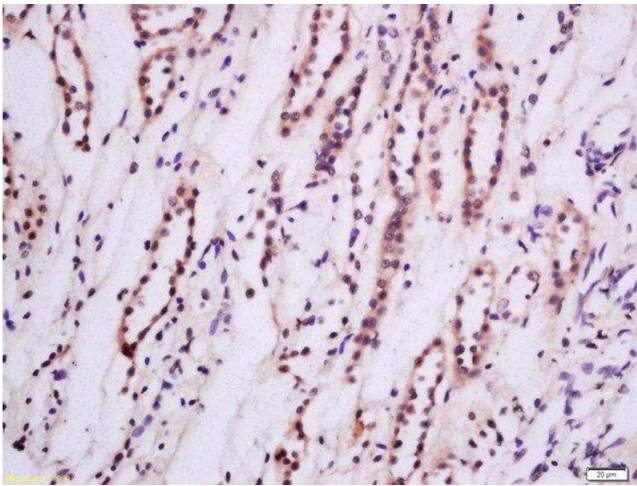
Product cited in: Qiao, Chen, Dong, Ma, Zhao, Tang, Li: "Polydatin Attenuates H2O2-Induced Oxidative Stress via PKC Pathway." in: **Oxidative medicine and cellular longevity**, Vol. 2016, pp. 5139458, (2016) ([PubMed](#)).

## Images



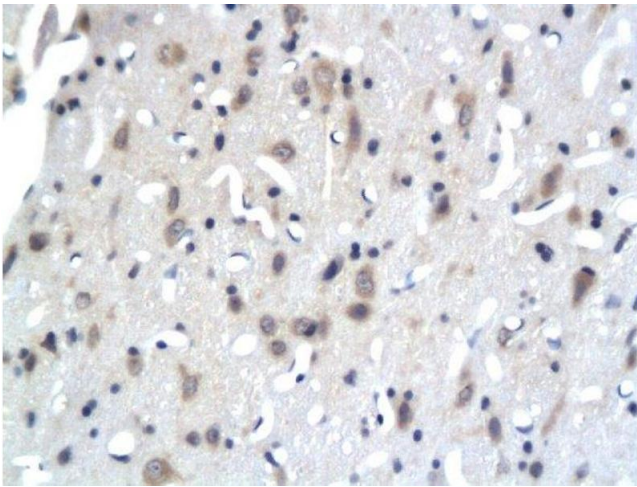
### Immunohistochemistry

**Image 1.** Formalin-fixed and paraffin embedded rat brain tissue labeled with Anti-PKC epsilon Polyclonal Antibody, Unconjugated (ABIN679538) followed by conjugation to the secondary antibody



#### Immunohistochemistry (Paraffin-embedded Sections)

**Image 2.** Formalin-fixed and paraffin embedded Human kidney tissue labeled with Anti-PKC epsilon Polyclonal Antibody, Unconjugated 1:200 followed by conjugation to the secondary antibody and DAB staining



#### Immunohistochemistry (Paraffin-embedded Sections)

**Image 3.** Formalin-fixed and paraffin embedded rat brain tissue labeled with Anti-PKC epsilon Polyclonal Antibody, Unconjugated followed by conjugation to the secondary antibody

Please check the [product details page](#) for more images. Overall 6 images are available for ABIN679538.