

Datasheet for ABIN679673
anti-YWHAE antibody (AA 151-255)[Go to Product page](#)

1 Image

Overview

| | |
|----------------------|--|
| Quantity: | 100 µL |
| Target: | YWHAE |
| Binding Specificity: | AA 151-255 |
| Reactivity: | Human, Mouse, Rat |
| Host: | Rabbit |
| Clonality: | Polyclonal |
| Conjugate: | This YWHAE antibody is un-conjugated |
| Application: | Western Blotting (WB), ELISA, Immunohistochemistry (Paraffin-embedded Sections) (IHC (p)), Immunofluorescence (Cultured Cells) (IF (cc)), Immunofluorescence (Paraffin-embedded Sections) (IF (p)), Immunohistochemistry (Frozen Sections) (IHC (fro)) |

Product Details

| | |
|-----------------------|---|
| Immunogen: | KLH conjugated synthetic peptide derived from human 14-3-3E |
| Isotype: | IgG |
| Cross-Reactivity: | Human, Mouse, Rat |
| Predicted Reactivity: | Cow, Sheep, Chicken, Rabbit |
| Purification: | Purified by Protein A. |

Target Details

| | |
|---------|-------|
| Target: | YWHAE |
|---------|-------|

Target Details

| | |
|-------------------|---|
| Alternative Name: | 14-3-3 epsilon/YWHAE (YWHAE Products) |
| Background: | <p>Synonyms: 14-3-3 epsilon, 14 3 3 E, 14 3 3 epsilon, 14 3 3E, 14-3-3 E, 14-3-3 protein epsilon, 14-3-3E, 1433E_HUMAN, KCIP 1, KCIP-1, KCIP1, MDCR, MDS, mitochondrial import stimulation factor L subunit, protein kinase C inhibitor protein-1, Protein kinase C inhibitor protein1, Tyrosine 3 monooxygenase/tryptophan 5 monooxygenase activation protein, epsilon polypeptide, tyrosine 3/tryptophan 5 -monooxygenase activation protein epsilon polypeptide, Tyrosine 3/tryptophan 5 monooxygenase activation protein epsilon polypeptide, YWHAE.</p> <p>Background: Adapter protein implicated in the regulation of a large spectrum of both general and specialized signaling pathway. Binds to a large number of partners, usually by recognition of a phosphoserine or phosphothreonine motif. Binding generally results in the modulation of the activity of the binding partner.</p> |
| Gene ID: | 7531 |
| Pathways: | Neurotrophin Signaling Pathway , Myometrial Relaxation and Contraction , M Phase |

Application Details

| | |
|--------------------|---|
| Application Notes: | WB 1:300-5000 ELISA 1:500-1000 IHC-P 1:200-400 IHC-F 1:100-500 IF(IHC-P) 1:50-200 IF(IHC-F) 1:50-200 IF(ICC) 1:50-200 |
| Restrictions: | For Research Use only |

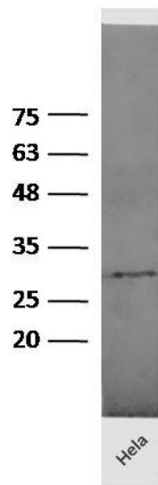
Handling

| | |
|--------------------|--|
| Format: | Liquid |
| Concentration: | 1 µg/µL |
| Buffer: | 0.01M TBS(pH 7.4) with 1 % BSA, 0.02 % Proclin300 and 50 % Glycerol. |
| Preservative: | ProClin |
| Precaution of Use: | This product contains ProClin: a POISONOUS AND HAZARDOUS SUBSTANCE, which should be handled by trained staff only. |
| Storage: | 4 °C,-20 °C |

Handling

| | |
|------------------|---|
| Storage Comment: | Shipped at 4°C. Store at -20°C for one year. Avoid repeated freeze/thaw cycles. |
| Expiry Date: | 12 months |

Images



Western Blotting

Image 1. Human HeLa lysates probed with Rabbit Anti-14-3-3 epsilon Polyclonal Antibody, Unconjugated (ABIN679673) at 1:300 overnight at 4 °C. Followed by conjugation to secondary antibody at 1:5000 for 90 min at 37 °C.