



[Go to Product page](#)

Datasheet for ABIN680198

anti-LAMP2 antibody (AA 301-411)

4 Images

5 Publications

Overview

Quantity:	100 µL
Target:	LAMP2
Binding Specificity:	AA 301-411
Reactivity:	Human, Mouse, Rat, Pig
Host:	Rabbit
Clonality:	Polyclonal
Conjugate:	This LAMP2 antibody is un-conjugated
Application:	Western Blotting (WB), ELISA, Flow Cytometry (FACS), Immunohistochemistry (Frozen Sections) (IHC (fro)), Immunohistochemistry (Paraffin-embedded Sections) (IHC (p)), Immunofluorescence (Paraffin-embedded Sections) (IF (p)), Immunofluorescence (Cultured Cells) (IF (cc))

Product Details

Immunogen:	KLH conjugated synthetic peptide derived from human LAMP2
Isotype:	IgG
Cross-Reactivity:	Human, Mouse, Pig, Rat
Predicted Reactivity:	Dog,Cow,Horse,Rabbit
Purification:	Purified by Protein A.

Target Details

Target:	LAMP2
---------	-------

Target Details

Alternative Name:	Lamp2 (LAMP2 Products)
Background:	Synonyms: LAMPB, CD107b, LAMP-2, LGP110, Lysosome-associated membrane glycoprotein 2, Lysosome-associated membrane protein 2, CD107 antigen-like family member B, LAMP2 Background: Implicated in tumor cell metastasis. May function in protection of the lysosomal membrane from autodigestion, maintenance of the acidic environment of the lysosome, adhesion when expressed on the cell surface (plasma membrane), and inter- and intracellular signal transduction. Protects cells from the toxic effects of methylating mutagens.
Gene ID:	3920
UniProt:	P13473
Pathways:	Autophagy

Application Details

Application Notes:	WB 1:300-5000 ELISA 1:500-1000 FCM 1:20-100 IHC-P 1:200-400 IHC-F 1:100-500 IF(IHC-P) 1:50-200 IF(IHC-F) 1:50-200 IF(ICC) 1:50-200
Restrictions:	For Research Use only

Handling

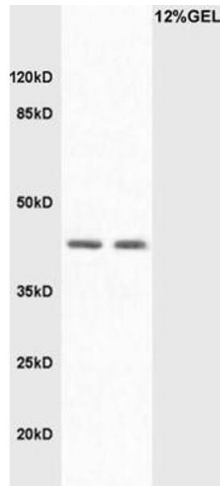
Format:	Liquid
Concentration:	1 µg/µL
Buffer:	0.01M TBS(pH 7.4) with 1 % BSA, 0.02 % Proclin300 and 50 % Glycerol.
Preservative:	ProClin
Precaution of Use:	This product contains ProClin: a POISONOUS AND HAZARDOUS SUBSTANCE, which should be handled by trained staff only.
Storage:	4 °C,-20 °C
Storage Comment:	Shipped at 4°C. Store at -20°C for one year. Avoid repeated freeze/thaw cycles.

Handling

Expiry Date: 12 months

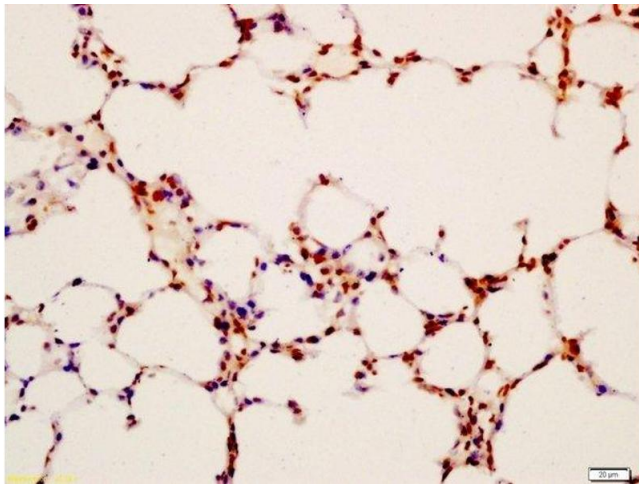
Publications

- Product cited in:
- Iwao, Ojima, Kobayashi, Kishi, Nara, Esaki, Shimada, Hiraoka, Tanabe, Kanai: "Liver atrophy after percutaneous transhepatic portal embolization occurs in two histological phases: Hepatocellular atrophy followed by apoptosis." in: **World journal of hepatology**, Vol. 9, Issue 32, pp. 1227-1238, (2017) ([PubMed](#)).
- Luks, Sacchi, Pollegioni, Dietrich: "Novel insights into renal D-amino acid oxidase accumulation: propiverine changes DAAO localization and peroxisomal size in vivo." in: **Archives of toxicology**, Vol. 91, Issue 1, pp. 427-437, (2016) ([PubMed](#)).
- Kameyama, Nakajima, Nishitsuji, Mikawa, Uchimura, Kobayashi, Okuhira, Saito, Sakashita: "Iowa Mutant Apolipoprotein A-I (ApoA-IIowa) Fibrils Target Lysosomes." in: **Scientific reports**, Vol. 6, pp. 30391, (2016) ([PubMed](#)).
- Sun, Nie, Wang, Yang, Meng, Xiao, Xiang, Li, Fu, Wang: "Factors that Affect Pancreatic Islet Cell Autophagy in Adult Rats: Evaluation of a Calorie-Restricted Diet and a High-Fat Diet." in: **PLoS ONE**, Vol. 11, Issue 3, pp. e0151104, (2016) ([PubMed](#)).
- Zhang, Fu, Sheng, Li, Song, Li, Song, Wang, Chen, Yu, Wei: "Bone marrow CD11b(+)F4/80(+) dendritic cells ameliorate collagen-induced arthritis through modulating the balance between Treg and Th17." in: **International immunopharmacology**, Vol. 25, Issue 1, pp. 96-105, (2015) ([PubMed](#)).



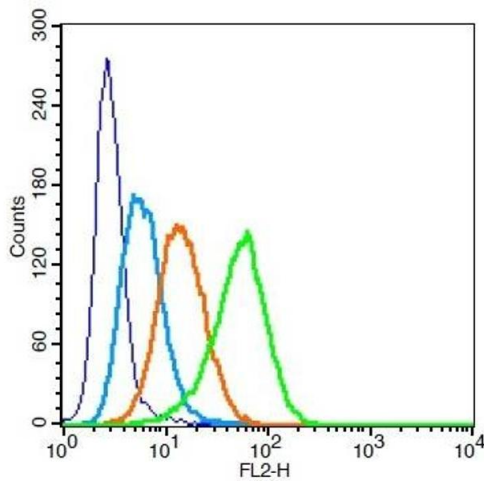
Western Blotting

Image 1. L1 Mouse intestine lysate L2 mouse liver lysates probed with Rabbit Anti-LAMP2/CD107B Polyclonal Antibody, Unconjugated at 1:3000 for 90 min at 37°C.



Immunohistochemistry (Paraffin-embedded Sections)

Image 2. Formalin-fixed and paraffin embedded mouse lung labeled with Anti-LAMP2/CD107B Polyclonal Antibody, Unconjugated at 1:200 followed by conjugation to the secondary antibody and DAB staining



Flow Cytometry

Image 3. Human U937 cells probed with LAMP2 Polyclonal Antibody, Unconjugated at 1:100 for 30 minutes followed by incubation with a PE Conjugated secondary (green) for 30 minutes compared to control cells (blue), secondary only (light blue) and isotype control (orange).

Please check the [product details page](#) for more images. Overall 4 images are available for ABIN680198.