

Datasheet for ABIN680263  
**anti-CDC25A antibody (AA 451-524)**



[Go to Product page](#)

1 Image

1 Publication

## Overview

Quantity:	100 µL
Target:	CDC25A
Binding Specificity:	AA 451-524
Reactivity:	Human, Mouse, Rat
Host:	Rabbit
Clonality:	Polyclonal
Conjugate:	This CDC25A antibody is un-conjugated
Application:	Western Blotting (WB), ELISA, Immunohistochemistry (Paraffin-embedded Sections) (IHC (p)), Immunofluorescence (Cultured Cells) (IF (cc)), Immunofluorescence (Paraffin-embedded Sections) (IF (p)), Immunohistochemistry (Frozen Sections) (IHC (fro))

## Product Details

Immunogen:	synthetic peptide from human cdc25A conjugated to KLH
Isotype:	IgG
Cross-Reactivity:	Human, Mouse, Rat
Predicted Reactivity:	Dog,Cow,Chicken,Rabbit
Purification:	Purified by Protein A.

## Target Details

Target:	CDC25A
---------	--------

## Target Details

---

Alternative Name: [Cdc25A \(CDC25A Products\)](#)

---

Background: Synonyms: Cdc 25a, CDC25A2, Cell division cycle 25 homolog A S. pombe, Cell division cycle 25A, Cell division cycle 25A isoform a, Cell division cycle 25A isoform bv, D9Ertd393ev, Dual specificity phosphatase CDC25A, EC 3.1.3.48, M phase inducer phosphatase 1, MGC115549.  
Background: CDC25A is a member of the CDC25 family of phosphatases. CDC25A is required for progression from G1 to the S phase of the cell cycle. It activates the cyclin-dependent kinase CDC2 by removing two phosphate groups. CDC25A is specifically degraded in response to DNA damage, which prevents cells with chromosomal abnormalities from progressing through cell division. CDC25A is an oncogene, although its exact role in oncogenesis has not been demonstrated. Two transcript variants encoding different isoforms have been found for this gene. [provided by RefSeq].

---

Gene ID: 993

---

Pathways: [Cell Division Cycle, Mitotic G1-G1/S Phases, M Phase](#)

---

## Application Details

---

Application Notes: WB 1:300-5000  
ELISA 1:500-1000  
IHC-P 1:200-400  
IHC-F 1:100-500  
IF(IHC-P) 1:50-200  
IF(IHC-F) 1:50-200  
IF(ICC) 1:50-200

---

Restrictions: For Research Use only

---

## Handling

---

Format: Liquid

---

Concentration: 1 µg/µL

---

Buffer: 0.01M TBS( pH 7.4) with 1 % BSA, 0.02 % Proclin300 and 50 % Glycerol.

---

Preservative: ProClin

---

Precaution of Use: This product contains ProClin: a POISONOUS AND HAZARDOUS SUBSTANCE, which should be handled by trained staff only.

---

Storage: 4 °C,-20 °C

---

## Handling

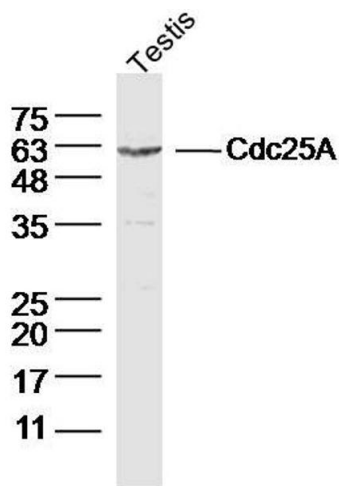
Storage Comment: Shipped at 4°C. Store at -20°C for one year. Avoid repeated freeze/thaw cycles.

Expiry Date: 12 months

## Publications

Product cited in: Wei, Zhang, Ren, Zhang, Liu, Duan, Yu, Li, Peng, Zhou, Sun: "Endosulfan induces cell dysfunction through cycle arrest resulting from DNA damage and DNA damage response signaling pathways." in: **The Science of the total environment**, Vol. 589, pp. 97-106, (2017) ([PubMed](#)).

## Images



**Image 1.** Mouse Testis lysates probed with Cdc25A Polyclonal Antibody, Unconjugated at 1:300 dilution and 4°C overnight incubation. Followed by conjugated secondary antibody incubation at 1:10000 for 60 min at 37°C.