

Datasheet for ABIN680743
anti-Claudin 4 antibody (AA 21-120)**3** Images**1** Publication[Go to Product page](#)

Overview

Quantity:	100 µL
Target:	Claudin 4 (CLDN4)
Binding Specificity:	AA 21-120
Reactivity:	Human, Rat
Host:	Rabbit
Clonality:	Polyclonal
Conjugate:	This Claudin 4 antibody is un-conjugated
Application:	Western Blotting (WB), ELISA, Immunofluorescence (Paraffin-embedded Sections) (IF (p)), Immunofluorescence (Cultured Cells) (IF (cc)), Immunohistochemistry (Frozen Sections) (IHC (fro))

Product Details

Immunogen:	KLH conjugated synthetic peptide derived from human CLDN4
Isotype:	IgG
Cross-Reactivity:	Human, Rat
Predicted Reactivity:	Mouse,Dog,Cow,Sheep,Pig,Horse,Chicken,Rabbit
Purification:	Purified by Protein A.

Target Details

Target:	Claudin 4 (CLDN4)
---------	-------------------

Target Details

Alternative Name:	Claudin 4 (CLDN4 Products)
Background:	<p>Synonyms: CPER, CPE-R, CPETR, CPETR1, WBSCR8, hCPE-R, Claudin-4, Clostridium perfringens enterotoxin receptor, CPE-receptor, Williams-Beuren syndrome chromosomal region 8 protein, CLDN4</p> <p>Background: Claudin 1-8 proteins are a family of transmembrane proteins associated with tight junctions. Tight junctions are specialized regions of cell to cell contact made up of network of strands that act as a molecular gasket for preventing the leakage of ions, water etc. between cells. They are abundant in luminal epithelial sheets where they maintain epithelial cell polarity. Different tissues exhibit different Claudin composition.</p>
Gene ID:	1364
UniProt:	O14493
Pathways:	Hepatitis C

Application Details

Application Notes:	WB 1:300-5000 ELISA 1:500-1000 IHC-P 1:200-400 IHC-F 1:100-500 IF(IHC-P) 1:50-200 IF(IHC-F) 1:50-200 IF(ICC) 1:50-200
Restrictions:	For Research Use only

Handling

Format:	Liquid
Concentration:	1 µg/µL
Buffer:	0.01M TBS(pH 7.4) with 1 % BSA, 0.02 % Proclin300 and 50 % Glycerol.
Preservative:	ProClin
Precaution of Use:	This product contains ProClin: a POISONOUS AND HAZARDOUS SUBSTANCE, which should be handled by trained staff only.
Storage:	4 °C, -20 °C

Handling

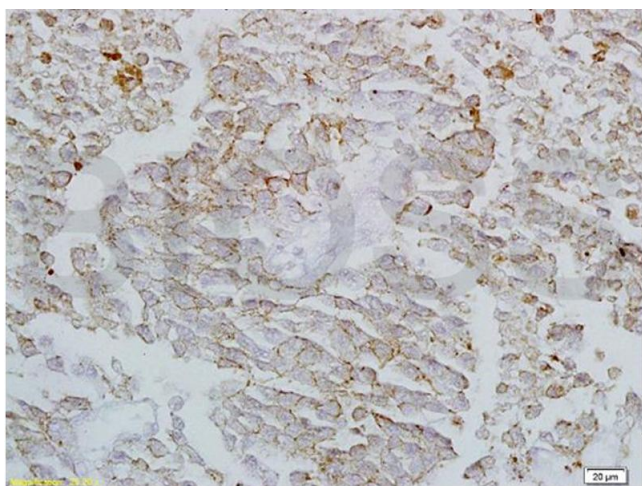
Storage Comment: Shipped at 4°C. Store at -20°C for one year. Avoid repeated freeze/thaw cycles.

Expiry Date: 12 months

Publications

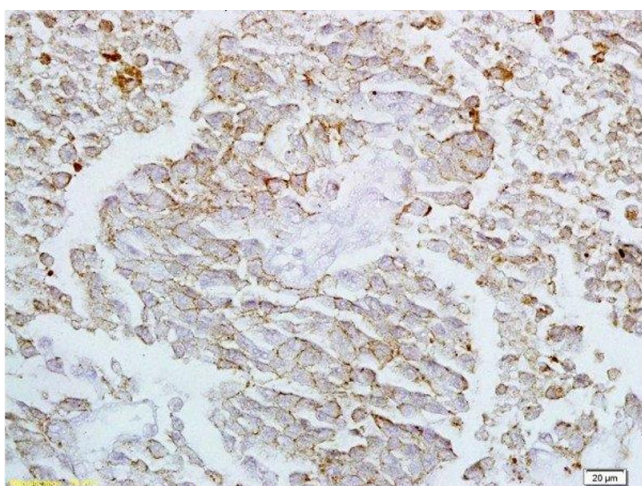
Product cited in: Wang, Chen, Liang, Yan, Lin, Liu, Luo, Huang, Li, Liu, Tang: "Notch inhibition promotes fetal liver stem/progenitor cells differentiation into hepatocytes via the inhibition of HNF-1?" in: **Cell and tissue research**, Vol. 357, Issue 1, pp. 173-84, (2014) ([PubMed](#)).

Images



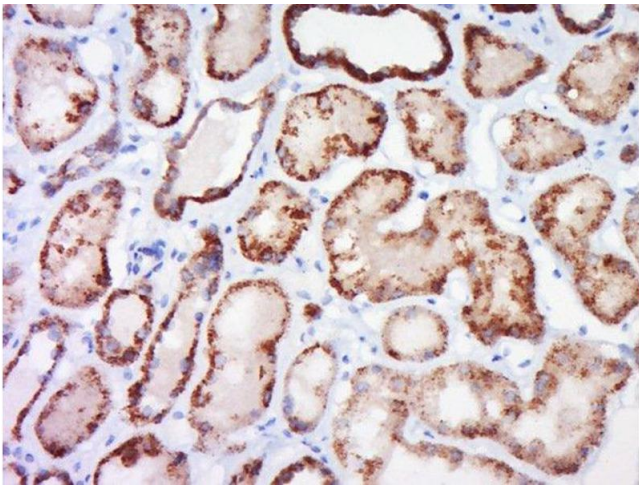
Immunohistochemistry

Image 1. Formalin-fixed and paraffin embedded rat lung labeled with Anti-Claudin-4 Polyclonal Antibody, Unconjugated (ABIN680743) at 1:200 followed by conjugation to the secondary antibody and DAB staining



Immunohistochemistry (Paraffin-embedded Sections)

Image 2. Formalin-fixed and paraffin embedded rat lung labeled with Anti-Claudin-4 Polyclonal Antibody, Unconjugated at 1:200 followed by conjugation to the secondary antibody and DAB staining



Immunohistochemistry (Paraffin-embedded Sections)

Image 3. Paraformaldehyde-fixed, paraffin embedded human kidney, Antigen retrieval by boiling in sodium citrate buffer (pH6) for 15min, Block endogenous peroxidase by 3% hydrogen peroxide for 30 minutes, Blocking buffer (normal goat serum) at 37°C for 20min, Antibody incubation with Claudin 4 Polyclonal Antibody, Unconjugated at 1:600 overnight at 4°C, followed by a conjugated secondary and DAB staining.