

Datasheet for ABIN680773
anti-CRHR2 antibody (AA 51-150)

2 Images

[Go to Product page](#)

Overview

Quantity:	100 µL
Target:	CRHR2
Binding Specificity:	AA 51-150
Reactivity:	Human, Mouse
Host:	Rabbit
Clonality:	Polyclonal
Conjugate:	This CRHR2 antibody is un-conjugated
Application:	Western Blotting (WB), ELISA, Immunofluorescence (Paraffin-embedded Sections) (IF (p)), Immunofluorescence (Cultured Cells) (IF (cc))

Product Details

Immunogen:	KLH conjugated synthetic peptide derived from human CRHR2
Isotype:	IgG
Specificity:	This antibody may cross react with CRHR1.
Cross-Reactivity:	Human, Mouse
Predicted Reactivity:	Rat,Dog,Cow,Pig,Horse,Chicken,Rabbit
Purification:	Purified by Protein A.

Target Details

Target:	CRHR2
---------	-------

Target Details

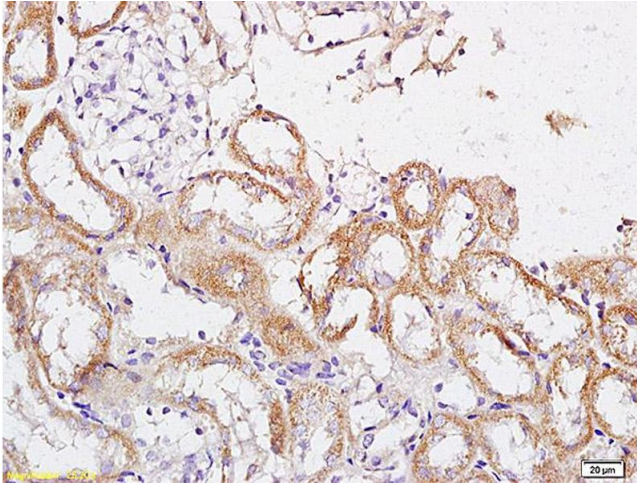
Alternative Name:	CRHR2 (CRHR2 Products)
Background:	<p>Synonyms: CRF2, CRFR2, CRF-RB, HM-CRF, Corticotropin-releasing factor receptor 2, CRF-R-2, CRF-R2, CRFR-2, Corticotropin-releasing hormone receptor 2, CRH-R-2, CRH-R2, CRHR2, CRF2R, CRH2R</p> <p>Background: G-protein coupled receptor for CRH (corticotropin-releasing factor), UCN (urocortin), UCN2 and UCN3. Has high affinity for UCN. Ligand binding causes a conformation change that triggers signaling via guanine nucleotide-binding proteins (G proteins) and downstream effectors, such as adenylate cyclase. Promotes the activation of adenylate cyclase, leading to increased intracellular cAMP levels.</p>
Gene ID:	1395
UniProt:	Q13324
Pathways:	Negative Regulation of Hormone Secretion , cAMP Metabolic Process , Feeding Behaviour

Application Details

Application Notes:	WB 1:300-5000 ELISA 1:500-1000 IF(IHC-F) 1:50-200 IF(ICC) 1:50-200
Restrictions:	For Research Use only

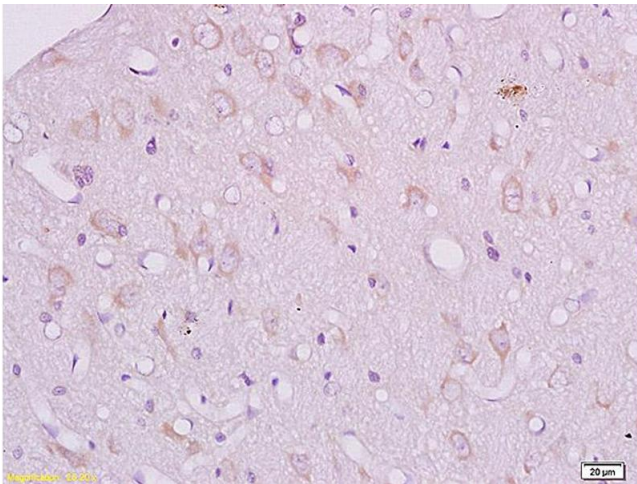
Handling

Format:	Liquid
Concentration:	1 µg/µL
Buffer:	0.01M TBS(pH 7.4) with 1 % BSA, 0.02 % Proclin300 and 50 % Glycerol.
Preservative:	ProClin
Precaution of Use:	This product contains ProClin: a POISONOUS AND HAZARDOUS SUBSTANCE, which should be handled by trained staff only.
Storage:	4 °C, -20 °C
Storage Comment:	Shipped at 4°C. Store at -20°C for one year. Avoid repeated freeze/thaw cycles.
Expiry Date:	12 months



Immunohistochemistry

Image 1. Formalin-fixed and paraffin embedded rat brain labeled with Anti CRHR2/Corticotropin Releasing Factor Receptor 2 Polyclonal Antibody, Unconjugated (ABIN680773) at 1:200 followed by conjugation to the secondary antibody and DAB staining



Immunohistochemistry

Image 2. Formalin-fixed and paraffin embedded mouse kidney tissue labeled with Anti CRHR2/Corticotropin Releasing Factor Receptor 2 Polyclonal Antibody, Unconjugated (ABIN680773) at 1:200 followed by conjugation to the secondary antibody and DAB staining