

Datasheet for ABIN680893
anti-Endonuclease G antibody (AA 101-200)[Go to Product page](#)

4 Images

Overview

Quantity:	100 µL
Target:	Endonuclease G (ENDOG)
Binding Specificity:	AA 101-200
Reactivity:	Mouse, Rat
Host:	Rabbit
Clonality:	Polyclonal
Conjugate:	This Endonuclease G antibody is un-conjugated
Application:	Western Blotting (WB), ELISA, Immunofluorescence (Cultured Cells) (IF (cc)), Immunohistochemistry (Paraffin-embedded Sections) (IHC (p)), Immunofluorescence (Paraffin-embedded Sections) (IF (p)), Immunohistochemistry (Frozen Sections) (IHC (fro))

Product Details

Immunogen:	KLH conjugated synthetic peptide derived from rat Endonuclease G
Isotype:	IgG
Cross-Reactivity:	Mouse, Rat
Predicted Reactivity:	Human,Dog,Cow,Sheep,Pig,Horse,Rabbit,Guinea Pig
Purification:	Purified by Protein A.

Target Details

Target:	Endonuclease G (ENDOG)
---------	------------------------

Target Details

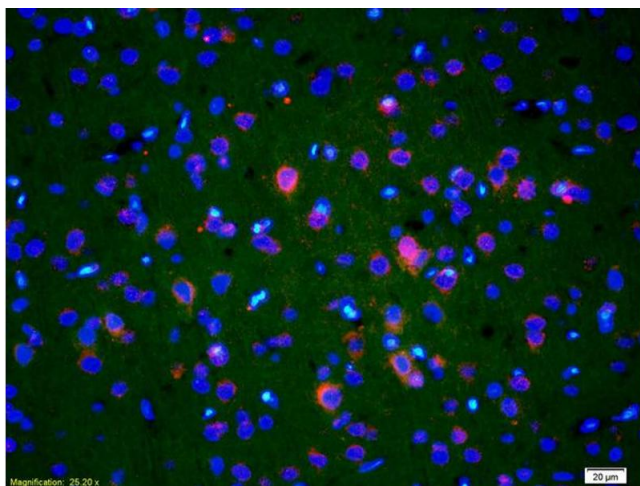
Alternative Name:	Endonuclease G (ENDOG Products)
Background:	<p>Synonyms: EndoG, Endonuclease G, Endonuclease G mitochondrial, EndonucleaseG, FLJ27463, ENDOG, NUCG_HUMAN, Endo G.</p> <p>Background: The protein encoded by this gene is a nuclear encoded endonuclease that is localized in the mitochondrion. The encoded protein is widely distributed among animals and cleaves DNA at GC tracts. This protein is capable of generating the RNA primers required by DNA polymerase gamma to initiate replication of mitochondrial DNA. [provided by RefSeq, Jul 2008].</p>
Gene ID:	362100
Pathways:	Apoptosis

Application Details

Application Notes:	WB 1:300-5000 ELISA 1:500-1000 IHC-P 1:200-400 IHC-F 1:100-500 IF(IHC-P) 1:50-200 IF(IHC-F) 1:50-200 IF(ICC) 1:50-200
Restrictions:	For Research Use only

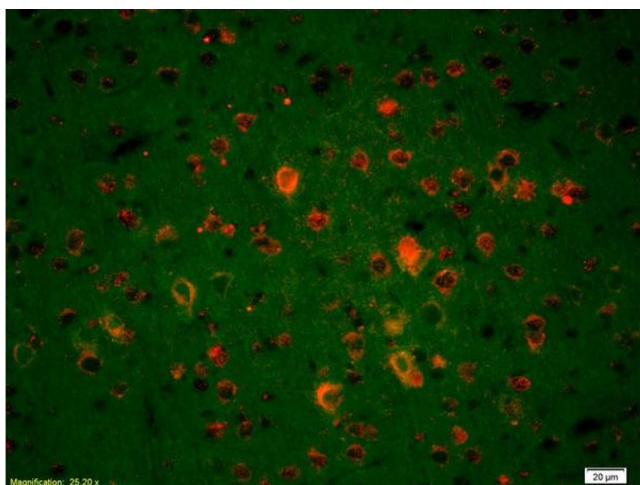
Handling

Format:	Liquid
Concentration:	1 µg/µL
Buffer:	0.01M TBS(pH 7.4) with 1 % BSA, 0.02 % Proclin300 and 50 % Glycerol.
Preservative:	ProClin
Precaution of Use:	This product contains ProClin: a POISONOUS AND HAZARDOUS SUBSTANCE, which should be handled by trained staff only.
Storage:	4 °C, -20 °C
Storage Comment:	Shipped at 4°C. Store at -20°C for one year. Avoid repeated freeze/thaw cycles.
Expiry Date:	12 months



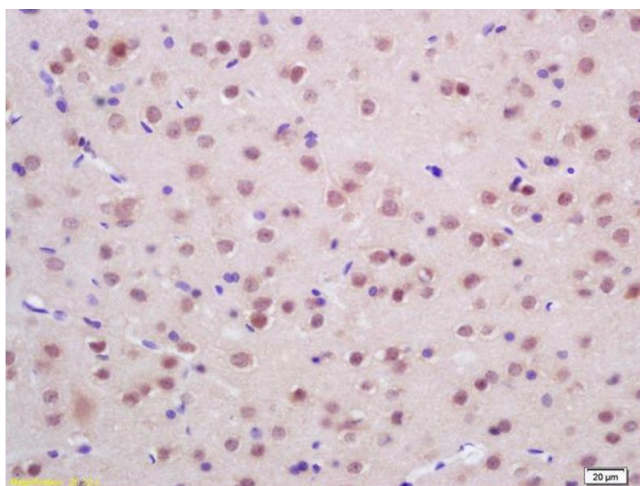
Immunofluorescence

Image 1. Formalin-fixed and paraffin-embedded rat brain labeled with Anti-Endo G Polyclonal Antibody, Unconjugated (ABIN680893) 1:200, overnight at 4°C, The secondary antibody was Goat Anti-Rabbit IgG, Cy3 conjugated used at 1:200 dilution for 40 minutes at 37°C.



Immunofluorescence

Image 2. Formalin-fixed and paraffin-embedded rat brain labeled with Anti-Endo G Polyclonal Antibody, Unconjugated (ABIN680893) 1:200, overnight at 4°C, The secondary antibody was Goat Anti-Rabbit IgG, Cy3 conjugated used at 1:200 dilution for 40 minutes at 37°C.



Immunohistochemistry

Image 3. Formalin-fixed and paraffin embedded rat brain Rabbit Anti Endo G Polyclonal Antibody, Unconjugated (ABIN680893) at 1:200 followed by conjugation to the secondary antibody and DAB staining

Please check the [product details page](#) for more images. Overall 4 images are available for ABIN680893.