

Datasheet for ABIN6809857
C5 Protein (AA 19-1676) (His tag)

2 Images

[Go to Product page](#)

Overview

Quantity:	100 µg
Target:	C5
Protein Characteristics:	AA 19-1676
Origin:	Cynomolgus
Source:	HEK-293 Cells
Protein Type:	Recombinant
Biological Activity:	Active
Purification tag / Conjugate:	This C5 protein is labelled with His tag.

Product Details

Sequence:	AA 19-1676
Purity:	>95 % as determined by SDS-PAGE.
Endotoxin Level:	Less than 1.0 EU per µg by the LAL method.

Target Details

Target:	C5
Alternative Name:	Complement C5 (C5 Products)
Background:	Derived from proteolytic degradation of complement C5, C5 anaphylatoxin is a mediator of local inflammatory process. C5 precursor is first processed by the removal of 4 basic residues, forming two chains, beta and alpha, linked by a disulfide bond. C5 convertase activates C5 by cleaving the alpha chain, releasing C5a anaphylatoxin and generating C5b (beta chain + alpha'

Target Details

chain). Activation of C5 by a C5 convertase initiates the spontaneous assembly of the late complement components, C5-C9, into the membrane attack complex. C5b has a transient binding site for C6. The C5b-C6 complex is the foundation upon which the lytic complex is assembled. The C5a anaphylatoxin interacts with C5AR1 and tick complement inhibitor. C5a is also a potent chemokine which stimulates the locomotion of polymorphonuclear leukocytes and directs their migration toward sites of inflammation.

Molecular Weight:	73.9 kDa (β chain) & 114.9 kDa (α chain)
NCBI Accession:	XP_005580972
Pathways:	Complement System , Carbohydrate Homeostasis

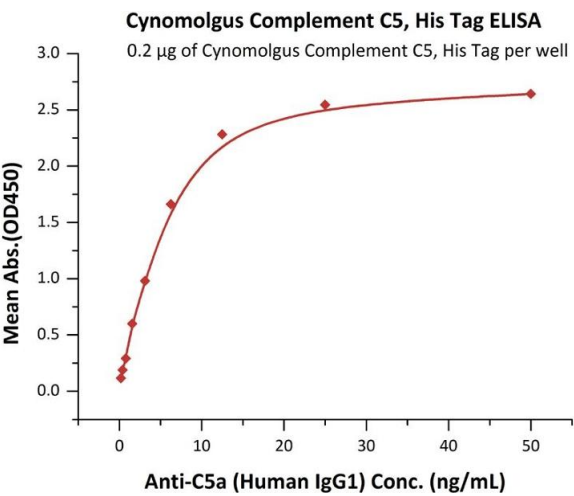
Application Details

Restrictions:	For Research Use only
---------------	-----------------------

Handling

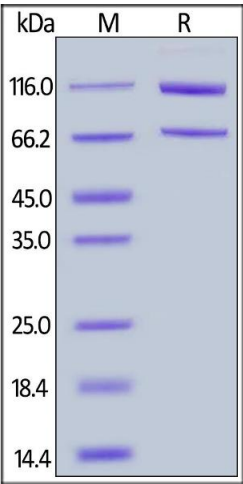
Format:	Lyophilized
Buffer:	PBS, pH 7.4
Handling Advice:	Please avoid repeated freeze-thaw cycles.
Storage:	-20 °C

Images



ELISA

Image 1. Immobilized Cynomolgus Complement C5, His Tag (ABIN6731337,ABIN6809857) at 2 µg/mL (100 µL/well) can bind Anti-C5a (Human IgG1) with a linear range of 0.4-6 ng/mL (QC tested).



SDS-PAGE

Image 2. Cynomolgus Complement C5, His Tag on under reducing (R) condition. The gel was stained overnight with Coomassie Blue. The purity of the protein is greater than 95 % .