

Datasheet for ABIN6809859

IL12RB1 Protein (AA 24-540) (Fc Tag)[Go to Product page](#)**2** Images

Overview

Quantity:	100 µg
Target:	IL12RB1
Protein Characteristics:	AA 24-540
Origin:	Human
Source:	HEK-293 Cells
Protein Type:	Recombinant
Biological Activity:	Active
Purification tag / Conjugate:	This IL12RB1 protein is labelled with Fc Tag.

Product Details

Sequence:	AA 24-540
Purity:	>95 % as determined by reduced SDS-PAGE.
Endotoxin Level:	Less than 1.0 EU per µg by the LAL method.

Target Details

Target:	IL12RB1
Alternative Name:	IL-12 R beta 1 (IL12RB1 Products)
Background:	The human IL-12 R subunit is a member of the cytokine receptor superfamily and the functional high-affinity IL-12R is composed of at least two beta-type cytokine receptor subunits, each independently exhibiting a low affinity for IL-12. IL-12 R beta 1 (Interleukin-12 receptor subunit beta-1) is also known as IL-12RB1, CD212. Functions as an interleukin receptor which binds

Target Details

interleukin-12 with low affinity and is involved in IL12 transduction. Associated with IL12RB2 it forms a functional, high affinity receptor for IL12. Associates also with IL23R to form the interleukin-23 receptor which functions in IL23 signal transduction probably through activation of the Jak-Stat signaling cascade.

Molecular Weight: 83.5 kDa

NCBI Accession: [NP_005526](#)

Pathways: [JAK-STAT Signaling](#), [Regulation of Leukocyte Mediated Immunity](#), [Positive Regulation of Immune Effector Process](#), [Activated T Cell Proliferation](#)

Application Details

Restrictions: For Research Use only

Handling

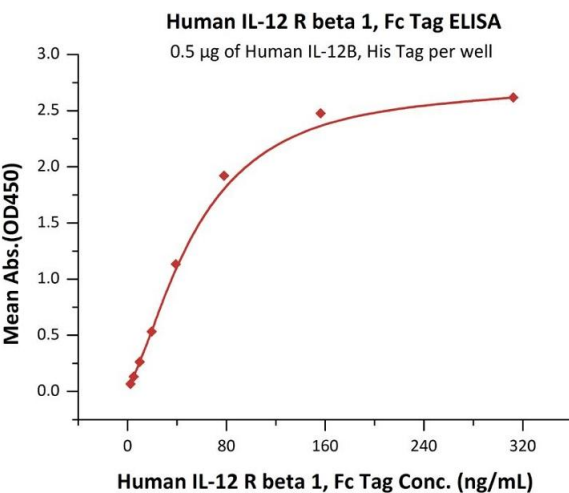
Format: Lyophilized

Buffer: Tris with Glycine, Arginine and NaCl, pH 7.5

Handling Advice: Please avoid repeated freeze-thaw cycles.

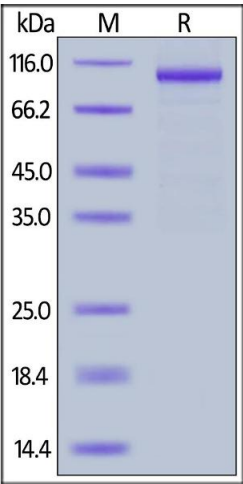
Storage: -20 °C

Images



ELISA

Image 1. Immobilized Human IL-12B, His Tag (ABIN2181334,ABIN3071755,ABIN6810016) at 5 µg/mL (100 µL/well) can bind Human IL-12 R beta 1, Fc Tag (ABIN6731330,ABIN6809859) with a linear range of 5-78 ng/mL (QC tested).



SDS-PAGE

Image 2. Human IL-12 R beta 1, Fc Tag on under reducing (R) condition. The gel was stained overnight with Coomassie Blue. The purity of the protein is greater than 95 % .