

Datasheet for ABIN6809873

SIGLEC15 Protein (AA 20-263) (His tag)[Go to Product page](#)**2** Images

Overview

Quantity:	100 µg
Target:	SIGLEC15
Protein Characteristics:	AA 20-263
Origin:	Cynomolgus
Source:	HEK-293 Cells
Protein Type:	Recombinant
Purification tag / Conjugate:	This SIGLEC15 protein is labelled with His tag.

Product Details

Sequence:	AA 20-263
Purity:	>90 % as determined by SDS-PAGE.
Endotoxin Level:	Less than 1.0 EU per µg by the LAL method.

Target Details

Target:	SIGLEC15
Alternative Name:	Siglec-15 (SIGLEC15 Products)
Background:	Siglec-15 is a DAP12-associated immunoreceptor, which belongs to the immunoglobulin superfamily and SIGLEC (sialic acid binding Ig-like lectin) family. Siglecs are cell surface proteins that bind sialic acid. They are found primarily on the surface of immune cells and are a subset of the I-type lectins. Siglec-15 consisting of immunoglobulin (Ig)-like domains, transmembrane domain and a short cytoplasmic tail. Siglec-15 is that recognizes sialylated

Target Details

	glycans and regulates osteoclast differentiation. Siglec-15 is a potential therapeutic target for osteoporosis and plays a conserved regulatory role in the immune system of vertebrates.
Molecular Weight:	28.1 kDa

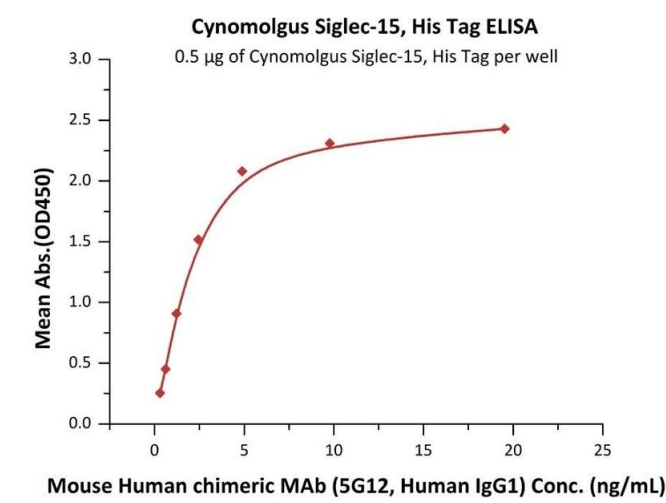
Application Details

Restrictions:	For Research Use only
---------------	-----------------------

Handling

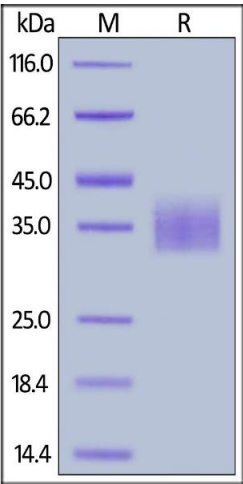
Format:	Lyophilized
Buffer:	PBS with Arginine, pH 7.4
Handling Advice:	Please avoid repeated freeze-thaw cycles.
Storage:	-20 °C

Images



ELISA

Image 1. Immobilized Cynomolgus Siglec-15, His Tag (ABIN6731344,ABIN6809873) at 5 µg/mL (100 µL/well) can bind Mouse Human chimeric MAb (5G12, Human IgG1) with a linear range of 0.3-2 ng/mL (QC tested).



SDS-PAGE

Image 2. Cynomolgus Siglec-15, His Tag on under reducing (R) condition. The gel was stained overnight with Coomassie Blue. The purity of the protein is greater than 90 % .