

Datasheet for ABIN6809899
C5A Protein (AA 679-755) (His tag)[Go to Product page](#)

2 Images

Overview

Quantity:	100 µg
Target:	C5A (C5a)
Protein Characteristics:	AA 679-755
Origin:	Mouse
Source:	Escherichia coli (E. coli)
Protein Type:	Recombinant
Biological Activity:	Active
Purification tag / Conjugate:	This C5A protein is labelled with His tag.

Product Details

Sequence:	AA 679-755
Purity:	>95 % as determined by SDS-PAGE.
Endotoxin Level:	Less than 1.0 EU per µg by the LAL method.

Target Details

Target:	C5A (C5a)
Alternative Name:	Complement Component C5a (C5a Products)
Background:	Complement Component C5a (C5a) is also known as C5a, and is a protein fragment released from complement component C5, is a potent chemotactic factor for human peripheral blood neutrophils and monocytes, and is believed to play an important role in a number of inflammatory conditions. There are several functions in the below: C5a is an anaphylatoxin,

Target Details

causing the release of histamine from mast cells, C5a is effective leukocyte chemoattractants, causing the accumulation of white blood cells, especially neutrophil granulocytes, at sites of complement activation, C5a activates white blood cells by increasing avidity for white blood cell integrins and upregulating the Lipoxygenase pathway for arachidonic acid metabolism, C5a is a powerful inflammatory mediator, and seems to be a key factor in the development of pathology of many inflammatory diseases involving the complement system, C5a modulates balance between activating versus inhibitory IgG Fc receptors on leukocytes, thereby enhancing autoimmune response.

Molecular Weight:	10.9 kDa
Pathways:	Complement System , Carbohydrate Homeostasis

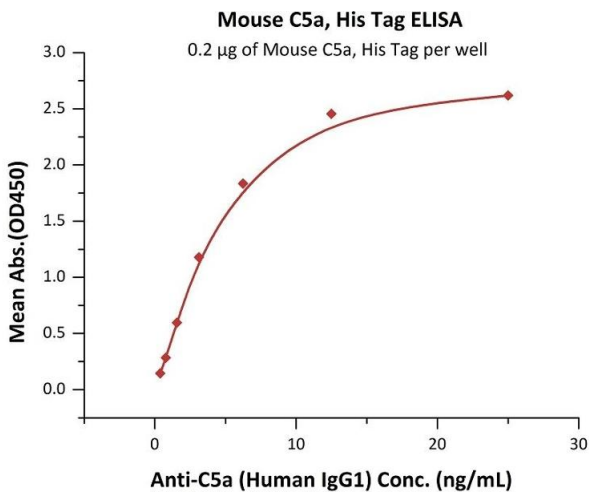
Application Details

Restrictions:	For Research Use only
---------------	-----------------------

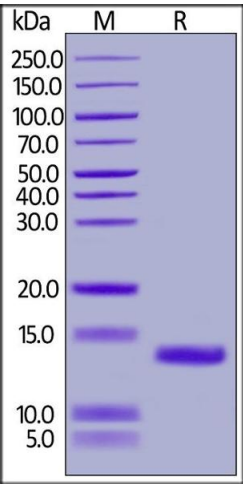
Handling

Format:	Lyophilized
Buffer:	PBS, pH 7.4
Handling Advice:	Please avoid repeated freeze-thaw cycles.
Storage:	-20 °C

Images



ELISA				
Image 1.	Immobilized	Mouse	C5a,	His Tag
(ABIN6731341,ABIN6809899) at 2 µg/mL (100 µL/well) can bind Anti-C5a (Human IgG1) with a linear range of 0.4-6 ng/mL (QC tested).				



SDS-PAGE

Image 2. Mouse C5a, His Tag on under reducing (R) condition. The gel was stained overnight with Coomassie Blue. The purity of the protein is greater than 95 % .