



[Go to Product page](#)

Datasheet for ABIN6809923

Growth Hormone Receptor Protein (GHR) (AA 19-264) (Fc Tag)

2 Images

Overview

Quantity:	100 µg
Target:	Growth Hormone Receptor (GHR)
Protein Characteristics:	AA 19-264
Origin:	Rhesus Monkey
Source:	HEK-293 Cells
Protein Type:	Recombinant
Biological Activity:	Active
Purification tag / Conjugate:	This Growth Hormone Receptor protein is labelled with Fc Tag.

Product Details

Sequence:	AA 19-264
Purity:	>90 % as determined by SDS-PAGE.
Endotoxin Level:	Less than 1.0 EU per µg by the LAL method.

Target Details

Target:	Growth Hormone Receptor (GHR)
Alternative Name:	Growth Hormone R (GHR Products)
Background:	Growth hormone receptor (GHR) is also known as somatotropin receptor, growth hormone-binding protein (GHBR), which belongs to the type I cytokine receptor family or Type 1 subfamily. GHR contains one fibronectin type-III domain. GHR / GHBR is expressed in various tissues with high expression in liver and skeletal muscle. The soluble form (GHBP) is produced

Target Details

by phorbol ester-promoted proteolytic cleavage at the cell surface (shedding) by ADAM17/TACE. GHR is receptor for pituitary gland growth hormone involved in regulating postnatal body growth. On ligand binding, couples to the JAK2/STAT5 pathway. The soluble form (GHBP) acts as a reservoir of growth hormone in plasma and may be a modulator/inhibitor of GH signaling.

Molecular Weight: 54.7 kDa

NCBI Accession: [NP_001036132](#)

Pathways: [NF-kappaB Signaling](#), [JAK-STAT Signaling](#), [Response to Growth Hormone Stimulus](#)

Application Details

Restrictions: For Research Use only

Handling

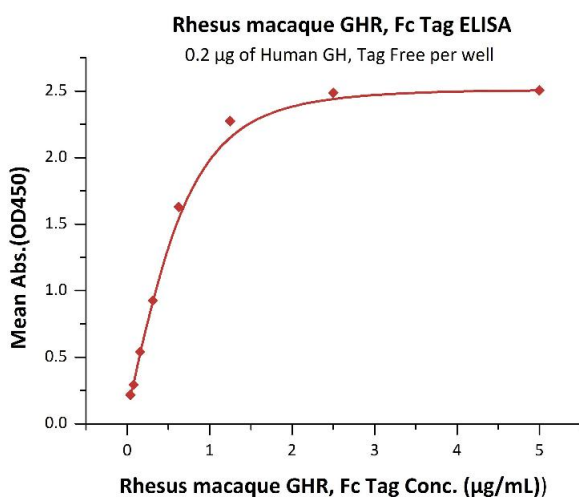
Format: Lyophilized

Buffer: Tris with Glycine, Arginine and NaCl, pH 7.5

Handling Advice: Please avoid repeated freeze-thaw cycles.

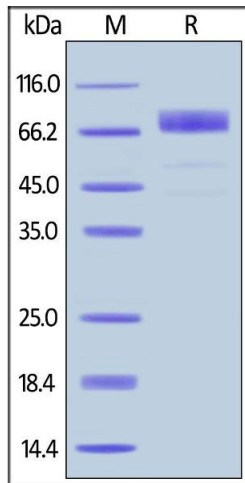
Storage: -20 °C

Images



ELISA

Image 1. Immobilized Human GH, Tag Free at 2 µg/mL (100 µL/well) can bind Rhesus macaque GHR, Fc Tag (ABIN6731254, ABIN6809923) with a linear range of 0.039-0.625 µg/mL (QC tested).



SDS-PAGE

Image 2. Rhesus macaque GHR, Fc Tag on under reducing (R) condition. The gel was stained overnight with Coomassie Blue. The purity of the protein is greater than 90 % .