

Datasheet for ABIN6809949

Thrombospondin 2 Protein (THBS2) (AA 19-1172) (His tag)[Go to Product page](#)**1** Image

Overview

Quantity:	100 µg
Target:	Thrombospondin 2 (THBS2)
Protein Characteristics:	AA 19-1172
Origin:	Human
Source:	HEK-293 Cells
Protein Type:	Recombinant
Purification tag / Conjugate:	This Thrombospondin 2 protein is labelled with His tag.

Product Details

Purity:	>90 % as determined by SDS-PAGE.
Endotoxin Level:	Less than 1.0 EU per µg by the LAL method.

Target Details

Target:	Thrombospondin 2 (THBS2)
Alternative Name:	Thrombospondin-2 (THBS2 Products)
Background:	Thrombospondin-2 is also known as THBS2, TSP2, TSP-2. Thrombospondin-2 (TSP2) is an anti-angiogenic matricellular protein that inhibits tumor growth and angiogenesis. Adhesive glycoprotein that mediates cell-to-cell and cell-to-matrix interactions. Ligand for CD36 mediating antiangiogenic properties. 2 SNPs in the intron region of THBS2 gene (rs6422747 and rs6422748) were associated with susceptibility of IDD. However, they were not related with severity of IDD, including the total number of degenerative disc and level of IDD.

Target Details

Thrombospondin 2, an important regulator of synaptogenesis in central nervous system development, was distributed in retinal macroglia cells, and its receptor $\alpha 2\delta$ -1 was in retinal neurons. activated macroglia cells may participate in alterations of presynaptic proteins of retinal neurons following elevated hydrostatic pressure, and macroglia-derived thrombospondin 2 may modulate these changes via binding to its neuronal receptor $\alpha 2\delta$ -1.

Molecular Weight:	129.7 kDa
NCBI Accession:	NP_003238

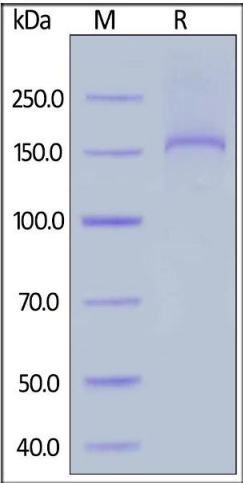
Application Details

Restrictions:	For Research Use only
---------------	-----------------------

Handling

Format:	Lyophilized
Buffer:	PBS, pH 7.4
Storage:	-20 °C

Images



SDS-PAGE

Image 1. Human Thrombospondin-2, His Tag on under reducing (R) condition. The gel was stained overnight with Coomassie Blue. The purity of the protein is greater than 90 % .