



[Go to Product page](#)

Datasheet for ABIN6809968

TIM3 Protein (AA 22-201) (His tag)

2 Images

Overview

Quantity:	100 µg
Target:	TIM3 (TIM 3)
Protein Characteristics:	AA 22-201
Origin:	Cynomolgus
Source:	HEK-293 Cells
Protein Type:	Recombinant
Biological Activity:	Active
Purification tag / Conjugate:	This TIM3 protein is labelled with His tag.

Product Details

Sequence:	AA 22-201
Purity:	>90 % as determined by SDS-PAGE.
Endotoxin Level:	Less than 1.0 EU per µg by the LAL method.

Target Details

Target:	TIM3 (TIM 3)
Alternative Name:	TIM-3 (TIM 3 Products)
Target Type:	Virus
Background:	Hepatitis A virus cellular receptor 2 is also known as HAVCR2, FLJ14428, KIM3, TIM3, TIMD3, is a member of the TIM family of immune regulating molecules with one Ig-like V-type domain

Target Details

and a Ser/Thr-rich mucin stalk. CD4-positive T helper lymphocytes can be divided into types 1 (Th1) and 2 (Th2) on the basis of their cytokine secretion patterns. Th1 cells and their associated cytokines are involved in cell-mediated immunity to intracellular pathogens and delayed-type hypersensitivity reactions, whereas Th2 cells are involved in the control of extracellular helminthic infections and the promotion of atopic and allergic diseases. The 2 types of cells also cross-regulate the functions of the other. HAVCR2 is a Th1-specific cell surface protein that regulates macrophage activation and enhances the severity of experimental autoimmune encephalomyelitis in mice. HAVCR2 regulates macrophage activation. Inhibits T-helper type 1 lymphocyte (Th1)-mediated auto- and alloimmune responses and promotes immunological tolerance. May be also involved in T-cell homing. Dysregulation of the HAVCR2-galectin-9 pathway could underlie chronic autoimmune disease states in human, such as multiple sclerosis.

Molecular Weight: 21.6 kDa

Pathways: [Regulation of Lipid Metabolism by PPARalpha](#), [Cancer Immune Checkpoints](#)

Application Details

Restrictions: For Research Use only

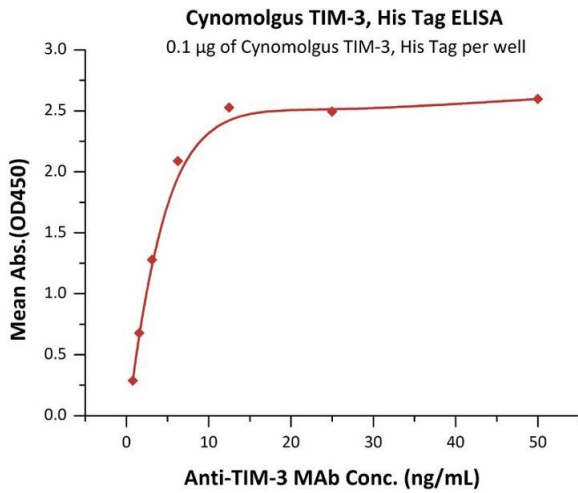
Handling

Format: Lyophilized

Buffer: PBS, pH 7.4

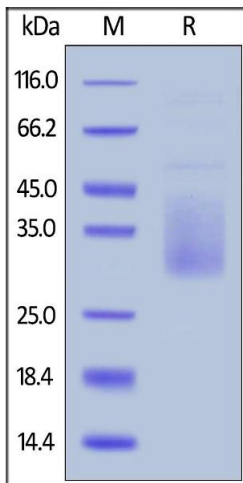
Handling Advice: Please avoid repeated freeze-thaw cycles.

Storage: -20 °C



ELISA

Image 1. Immobilized Cynomolgus TIM-3, His Tag (ABIN6731286,ABIN6809968) at 1 µg/mL (100 µL/well) can bind Anti-TIM-3 MAb with a linear range of 0.8-6 ng/mL (QC tested).



SDS-PAGE

Image 2. Cynomolgus TIM-3, His Tag on under reducing (R) condition. The gel was stained overnight with Coomassie Blue. The purity of the protein is greater than 90 % .