

Datasheet for ABIN680998  
**anti-CD161 antibody (AA 151-225)**

## 3 Images

[Go to Product page](#)

## Overview

Quantity:	100 µL
Target:	CD161 (KLRB1)
Binding Specificity:	AA 151-225
Reactivity:	Human, Rat
Host:	Rabbit
Clonality:	Polyclonal
Conjugate:	This CD161 antibody is un-conjugated
Application:	ELISA

## Product Details

Immunogen:	KLH conjugated synthetic peptide derived from human CD161/NK11
Isotype:	IgG
Cross-Reactivity:	Human, Rat
Purification:	Purified by Protein A.

## Target Details

Target:	CD161 (KLRB1)
Alternative Name:	CD161 ( <a href="#">KLRB1 Products</a> )
Background:	Synonyms: NKR, CD161, CLEC5B, NKR-P1, NKR-P1A, hNKR-P1A, Killer cell lectin-like receptor subfamily B member 1, C-type lectin domain family 5 member B, Natural killer cell

## Target Details

surface protein P1A, KLRB1

Background: Plays an inhibitory role on natural killer (NK) cells cytotoxicity. Activation results in specific acid sphingomyelinase/SMPD1 stimulation with subsequent marked elevation of intracellular ceramide. Activation also leads to AKT1/PKB and RPS6KA1/RSK1 kinases stimulation as well as markedly enhanced T-cell proliferation induced by anti-CD3. Acts as a lectin that binds to the terminal carbohydrate Gal-alpha(1,3)Gal epitope as well as to the N-acetyllactosamine epitope. Binds also to CLEC2D/LLT1 as a ligand and inhibits NK cell-mediated cytotoxicity as well as interferon-gamma secretion in target cells.

Gene ID: 3820

UniProt: [Q12918](#)

## Application Details

Application Notes: WB 1:300-5000  
ELISA 1:500-1000

Restrictions: For Research Use only

## Handling

Format: Liquid

Concentration: 1 µg/µL

Buffer: 0.01M TBS( pH 7.4) with 1 % BSA, 0.02 % Proclin300 and 50 % Glycerol.

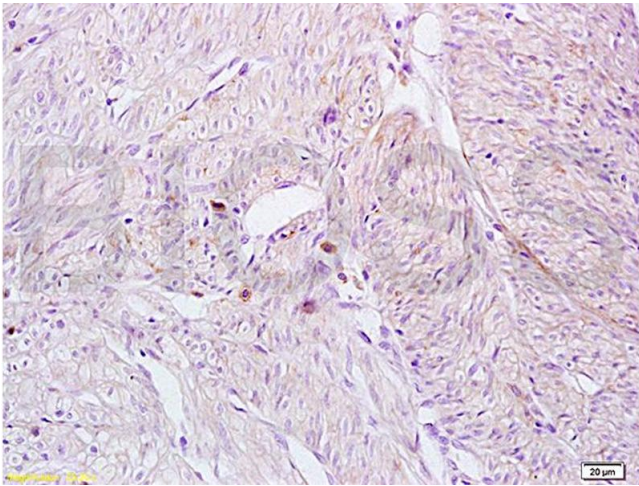
Preservative: ProClin

Precaution of Use: This product contains ProClin: a POISONOUS AND HAZARDOUS SUBSTANCE, which should be handled by trained staff only.

Storage: 4 °C,-20 °C

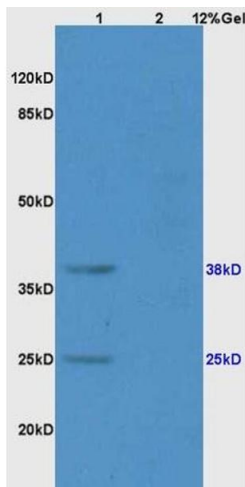
Storage Comment: Shipped at 4°C. Store at -20°C for one year. Avoid repeated freeze/thaw cycles.

Expiry Date: 12 months



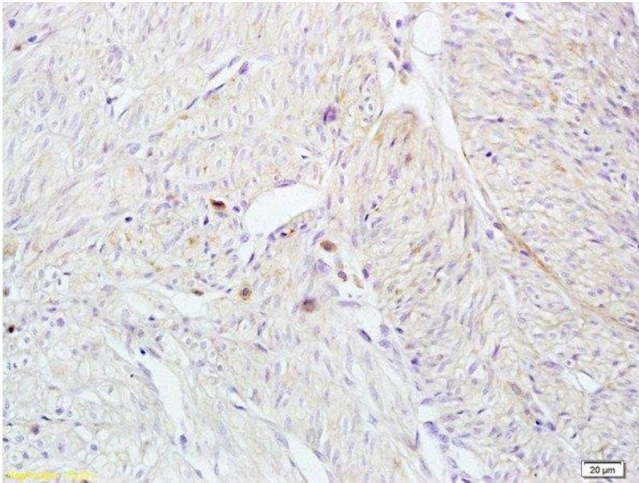
### Immunohistochemistry

**Image 1.** Formalin-fixed and paraffin embedded human breast carcinoma tissue labeled with Anti-CD161 Polyclonal Antibody, Unconjugated (ABIN680998) at 1:200 followed by conjugation to the secondary antibody and DAB staining



### SDS-PAGE

**Image 2.** Lane 1: rat brain lysates Lane 2: rat liver lysates probed with Anti CD161 Polyclonal Antibody, Unconjugated (ABIN680998) at 1:200 in 4 °C. Followed by conjugation to secondary antibody at 1:3000 90min in 37 °C. Predicted band 25kD. Observed band size: 25kD, 38kD.



### Immunohistochemistry (Paraffin-embedded Sections)

**Image 3.** Formalin-fixed and paraffin embedded human breast carcinoma tissue labeled with Anti-CD161 Polyclonal Antibody, Unconjugated at 1:200 followed by conjugation to the secondary antibody and DAB staining