

Datasheet for ABIN681223
anti-TRPM2 antibody (AA 951-1050)[Go to Product page](#)

1 Image

Overview

Quantity:	100 µL
Target:	TRPM2
Binding Specificity:	AA 951-1050
Reactivity:	Human, Mouse, Rat
Host:	Rabbit
Clonality:	Polyclonal
Conjugate:	This TRPM2 antibody is un-conjugated
Application:	Western Blotting (WB), ELISA, Immunohistochemistry (Paraffin-embedded Sections) (IHC (p)), Immunohistochemistry (Frozen Sections) (IHC (fro)), Immunofluorescence (Cultured Cells) (IF (cc)), Immunofluorescence (Paraffin-embedded Sections) (IF (p))

Product Details

Immunogen:	KLH conjugated synthetic peptide derived from human TRPM2
Isotype:	IgG
Cross-Reactivity:	Human, Mouse, Rat
Predicted Reactivity:	Horse
Purification:	Purified by Protein A.

Target Details

Target:	TRPM2
---------	-------

Target Details

Alternative Name:	TRPM2 (TRPM2 Products)
Background:	<p>Synonyms: KNP3, EREG1, TRPC7, LTRPC2, NUDT9H, NUDT9L1, Transient receptor potential cation channel subfamily M member 2, Estrogen-responsive element-associated gene 1 protein, Long transient receptor potential channel 2, LTrpC-2, Transient receptor potential channel 7, TRPM2</p> <p>Background: Nonselective, voltage-independent cation channel mediating sodium and calcium ion influx in response to oxidative stress. Extracellular calcium passes through the channel and acts from the intracellular side as a positive regulator in channel activation. Activated by ADP-ribose, nicotinamide adenine dinucleotide (NAD(+)), reactive nitrogen species and arachidonic acid. Inactivated by intracellular ATP. Confers susceptibility to cell death following oxidative stress. Isoform 2 does not seem to be regulated by ADPR. Has ADP-ribose pyrophosphatase activity.</p>
Gene ID:	7226
UniProt:	O94759

Application Details

Application Notes:	WB 1:300-5000 ELISA 1:500-1000 IHC-P 1:200-400 IHC-F 1:100-500 IF(IHC-P) 1:50-200 IF(IHC-F) 1:50-200 IF(ICC) 1:50-200
Restrictions:	For Research Use only

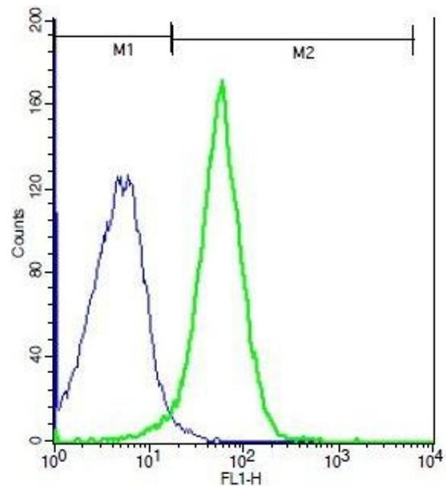
Handling

Format:	Liquid
Concentration:	1 µg/µL
Buffer:	0.01M TBS(pH 7.4) with 1 % BSA, 0.02 % Proclin300 and 50 % Glycerol.
Preservative:	ProClin
Precaution of Use:	This product contains ProClin: a POISONOUS AND HAZARDOUS SUBSTANCE, which should be handled by trained staff only.

Handling

Storage:	4 °C,-20 °C
Storage Comment:	Shipped at 4°C. Store at -20°C for one year. Avoid repeated freeze/thaw cycles.
Expiry Date:	12 months

Images



Flow Cytometry

Image 1. Mouse probed with Rabbit Anti-TRPM2 Polyclonal Antibody, Unconjugated (ABIN681223) (green) at 1:100 for 40 minutes followed by a FITC conjugated secondary compared to control cells (blue).