



Datasheet for ABIN681583

anti-MAP1LC3A/B antibody (AA 21-121)



[Go to Product page](#)

2 Images

1 Publication

Overview

Quantity:	100 µL
Target:	MAP1LC3A/B
Binding Specificity:	AA 21-121
Reactivity:	Human, Rat, Mouse, Rabbit
Host:	Rabbit
Clonality:	Polyclonal
Conjugate:	This MAP1LC3A/B antibody is un-conjugated
Application:	Western Blotting (WB), Immunofluorescence (Cultured Cells) (IF (cc)), Immunofluorescence (Paraffin-embedded Sections) (IF (p)), Immunohistochemistry (Paraffin-embedded Sections) (IHC (p)), ELISA, Immunohistochemistry (Frozen Sections) (IHC (fro))

Product Details

Immunogen:	KLH conjugated synthetic peptide derived from human MAP1A/MAP1B LC3 B
Isotype:	IgG
Cross-Reactivity:	Human, Mouse, Rabbit, Rat
Predicted Reactivity:	Dog,Cow,Pig,Horse,Chicken
Purification:	Purified by Protein A.

Target Details

Target:	MAP1LC3A/B
---------	------------

Target Details

Alternative Name: MAP1A/MAP1B LC3 A/B ([MAP1LC3A/B Products](#))

Background: Synonyms: MAP LC3 beta, LC3, Autophagy related protein LC3 A, Autophagy related protein LC3 B, Autophagy related ubiquitin like modier LC3 A, Autophagy related ubiquitin like modier LC3 B, MAP1 light chain 3 like protein 1, MAP1 light chain 3 like protein 2, MAP1A/1B light chain 3 A, MAP1A/1B light chain 3 B, MAP1A/1BLC3, MAP1A/MAP1B LC3 A, MAP1A/MAP1B LC3 B, MAP1ALC3, MAP1BLC3, MAP1LC3A, MAP1LC3B, Microtubule associated protein 1 light chain 3 alpha, Microtubule associated protein 1 light chain 3 beta, Microtubule associated proteins 1A/1B light chain 3, Microtubule associated proteins 1A/1B light chain 3A, Microtubule associated proteins 1A/1B light chain 3B. microtubule-associated proteins 1A/1B light chain 3 beta 2

Background: A major contributor to cellular homeostasis is the ability of the cell to strike a balance between the formation and degradation/removal of its cellular components. This process of internal cellular turn-over is called autophagy (self-eating), and is facilitated by a pathway of around 16 interacting proteins in the human. LC3, a ubiquitin-like modifier protein, is the human homolog of yeast Apg8 and is involved in the formation of autophagosomal vacuoles, called autophagosomes. LC3 is expressed as 3 splice variants (LC3A, LC3B and LC3C), which exhibit different tissue distributions and are processed into cytosolic and autophagosomal membrane-bound forms, termed LC3-I and LC3-II, respectively. A disruption to the autophagic process is now associated with the progression of several cancers, neurodegenerative disorders and cardiac pathologies, where LC3 is widely employed as a marker for autophagy.

Gene ID: 81631, 84557

Application Details

Application Notes: WB 1:300-5000
ELISA 1:500-1000
IHC-P 1:200-400
IHC-F 1:100-500
IF(IHC-P) 1:50-200
IF(IHC-F) 1:50-200
IF(ICC) 1:50-200

Restrictions: For Research Use only

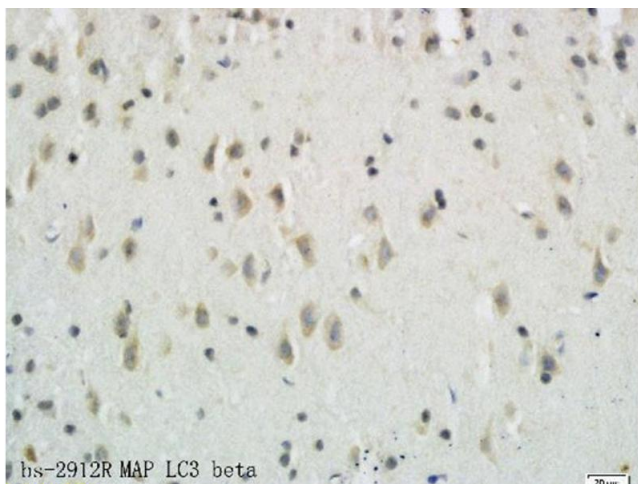
Handling

Format:	Liquid
Concentration:	1 µg/µL
Buffer:	0.01M TBS(pH 7.4) with 1 % BSA, 0.02 % Proclin300 and 50 % Glycerol.
Preservative:	ProClin
Precaution of Use:	This product contains ProClin: a POISONOUS AND HAZARDOUS SUBSTANCE, which should be handled by trained staff only.
Storage:	4 °C,-20 °C
Storage Comment:	Shipped at 4°C. Store at -20°C for one year. Avoid repeated freeze/thaw cycles.
Expiry Date:	12 months

Publications

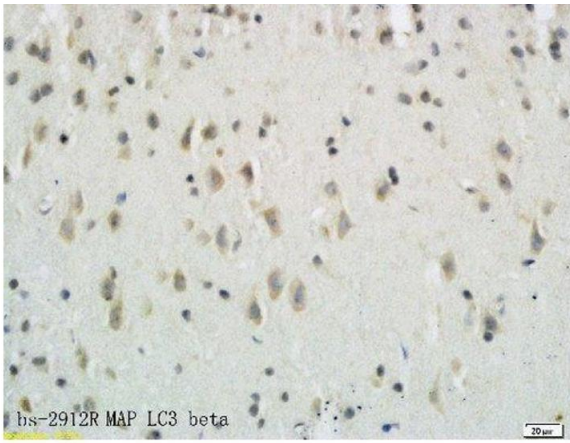
Product cited in: Lin, Kuo, Chen, Chien: "Quercetin-Rich Guava (*Psidium guajava*) Juice in Combination with Trehalose Reduces Autophagy, Apoptosis and Pyroptosis Formation in the Kidney and Pancreas of Type II Diabetic Rats." in: **Molecules (Basel, Switzerland)**, Vol. 21, Issue 3, pp. 334, (2016) ([PubMed](#)).

Images



Immunohistochemistry

Image 1. Formalin-fixed and paraffin embedded rat brain tissue labeled with Anti-LC3B/MAP LC3?/MAP1A Polyclonal Antibody, Unconjugated (ABIN681583) followed by conjugation to the secondary antibody and DAB staining



bs-2912R rat brain tissue

Immunohistochemistry (Paraffin-embedded Sections)

Image 2. Formalin-fixed and paraffin embedded rat brain tissue labeled with Anti-LC3B/MAP LC3β/MAP1A Polyclonal Antibody, Unconjugated followed by conjugation to the secondary antibody and DAB staining