

Datasheet for ABIN681658
anti-SPINK1 antibody (AA 66-79)

2 Images

[Go to Product page](#)

Overview

Quantity:	100 µL
Target:	SPINK1
Binding Specificity:	AA 66-79
Reactivity:	Rat
Host:	Rabbit
Clonality:	Polyclonal
Conjugate:	This SPINK1 antibody is un-conjugated
Application:	ELISA, Immunofluorescence (Cultured Cells) (IF (cc)), Immunofluorescence (Paraffin-embedded Sections) (IF (p)), Immunohistochemistry (Paraffin-embedded Sections) (IHC (p)), Immunohistochemistry (Frozen Sections) (IHC (fro))

Product Details

Immunogen:	KLH conjugated synthetic peptide derived from rat SPINK1
Isotype:	IgG
Specificity:	This protein is known to be similar in amino acid sequence to SPINK3 and thus may cross-react with this protein.
Predicted Reactivity:	Rat
Purification:	Purified by Protein A.

Target Details

Target:	SPINK1
---------	--------

Target Details

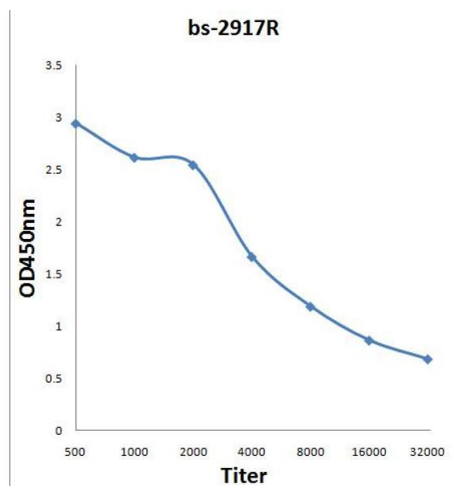
Alternative Name:	Spink1 (SPINK1 Products)
Background:	<p>Synonyms: Tilp, Psti-1, Spink1, Serine protease inhibitor Kazal-type 1, Cholecystokinin-releasing peptide, Monitor peptide, Pancreatic secretory trypsin inhibitor, PSTI-I</p> <p>Background: Serine protease inhibitor which exhibits anti-trypsin activity (PubMed:3202973, PubMed:3597401). In the pancreas, protects against trypsin-catalyzed premature activation of zymogens (By similarity). In the male reproductive tract, binds to sperm heads where it modulates sperm capacitance by inhibiting calcium uptake and nitrogen oxide (NO) production (By similarity).</p>
Gene ID:	24833
UniProt:	P09655

Application Details

Application Notes:	IHC-P 1:100-500 IF(IHC-P) 1:50-200
Restrictions:	For Research Use only

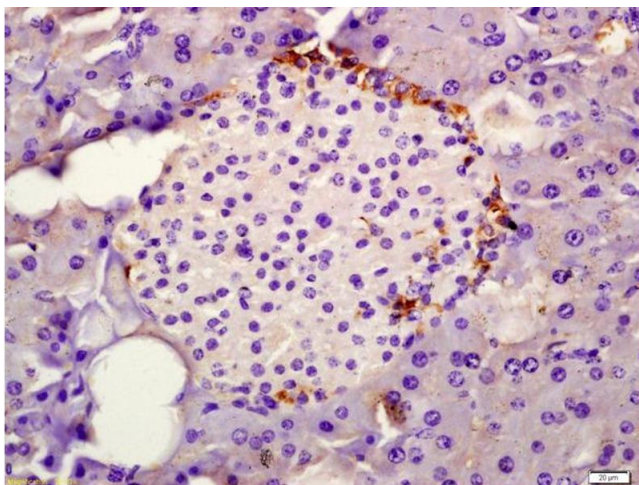
Handling

Format:	Liquid
Concentration:	1 µg/µL
Buffer:	0.01M TBS(pH 7.4) with 1 % BSA, 0.02 % Proclin300 and 50 % Glycerol.
Preservative:	Sodium azide
Precaution of Use:	This product contains Sodium azide: a POISONOUS AND HAZARDOUS SUBSTANCE, which should be handled by trained staff only.
Storage:	4 °C,-20 °C
Storage Comment:	Shipped at 4°C. Store at -20°C for one year. Avoid repeated freeze/thaw cycles.
Expiry Date:	12 months



ELISA

Image 1. Antigen: 0.2 µg/100 µL Primary: Antiserum, 1:500, 1:1000, 1:2000, 1:4000, 1:8000, 1:16000, 1:32000; Secondary: HRP conjugated Goat-Anti-Rabbit IgG at 1: 5000; TMB staining; Read the data in MicroplateReader by 450



Immunohistochemistry

Image 2. Formalin-fixed and paraffin embedded rat pancreas labeled with Anti-SPINK1 Polyclonal Antibody, Unconjugated (ABIN681658) at 1:200 followed by conjugation to the secondary antibody and DAB staining