

Datasheet for ABIN681778  
**anti-Klotho antibody (AA 401-500)**[Go to Product page](#)

4 Images

1 Publication

## Overview

Quantity:	100 µL
Target:	Klotho (KL)
Binding Specificity:	AA 401-500
Reactivity:	Human, Mouse, Rat
Host:	Rabbit
Clonality:	Polyclonal
Conjugate:	This Klotho antibody is un-conjugated
Application:	Immunohistochemistry (Paraffin-embedded Sections) (IHC (p)), Immunohistochemistry (Frozen Sections) (IHC (fro)), Immunofluorescence (Paraffin-embedded Sections) (IF (p))

## Product Details

Immunogen:	KLH conjugated synthetic peptide derived from human Klotho
Isotype:	IgG
Cross-Reactivity:	Human, Mouse, Rat
Predicted Reactivity:	Dog,Cow,Pig,Horse,Rabbit
Purification:	Purified by Protein A.

## Target Details

Target:	Klotho (KL)
Alternative Name:	Klotho ( <a href="#">KL Products</a> )

## Target Details

Background:	Synonyms: Klotho, KL  Background: May have weak glycosidase activity towards glucuronylated steroids. However, it lacks essential active site Glu residues at positions 239 and 872, suggesting it may be inactive as a glycosidase in vivo. May be involved in the regulation of calcium and phosphorus homeostasis by inhibiting the synthesis of active vitamin D (By similarity). Essential factor for the specific interaction between FGF23 and FGFR1 (By similarity). The Klotho peptide generated by cleavage of the membrane-bound isoform may be an anti-aging circulating hormone which would extend life span by inhibiting insulin/IGF1 signaling.
Gene ID:	9365
UniProt:	<a href="#">Q9UEF7</a>
Pathways:	<a href="#">Fc-epsilon Receptor Signaling Pathway</a> , <a href="#">EGFR Signaling Pathway</a> , <a href="#">Neurotrophin Signaling Pathway</a> , <a href="#">Hormone Activity</a> , <a href="#">Growth Factor Binding</a>

## Application Details

Application Notes:	WB 1:300-5000 ELISA 1:500-1000 IHC-P 1:200-400 IHC-F 1:100-500 IF(IHC-P) 1:50-200 IF(IHC-F) 1:50-200 IF(ICC) 1:50-200
Restrictions:	For Research Use only

## Handling

Format:	Liquid
Concentration:	1 µg/µL
Buffer:	0.01M TBS( pH 7.4) with 1 % BSA, 0.02 % Proclin300 and 50 % Glycerol.
Preservative:	ProClin
Precaution of Use:	This product contains ProClin: a POISONOUS AND HAZARDOUS SUBSTANCE, which should be handled by trained staff only.
Storage:	4 °C,-20 °C

## Handling

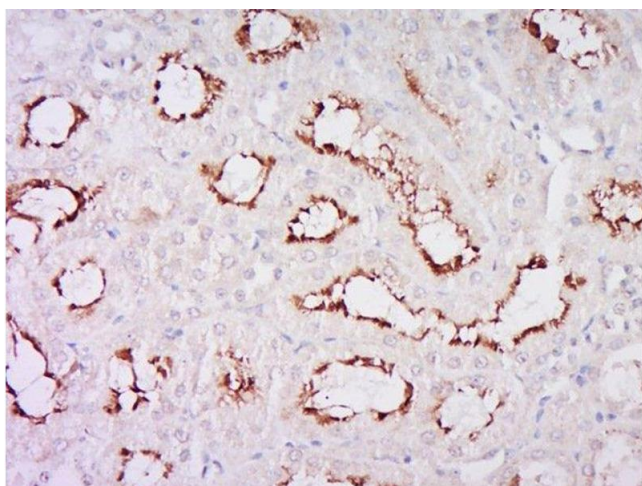
Storage Comment: Shipped at 4°C. Store at -20°C for one year. Avoid repeated freeze/thaw cycles.

Expiry Date: 12 months

## Publications

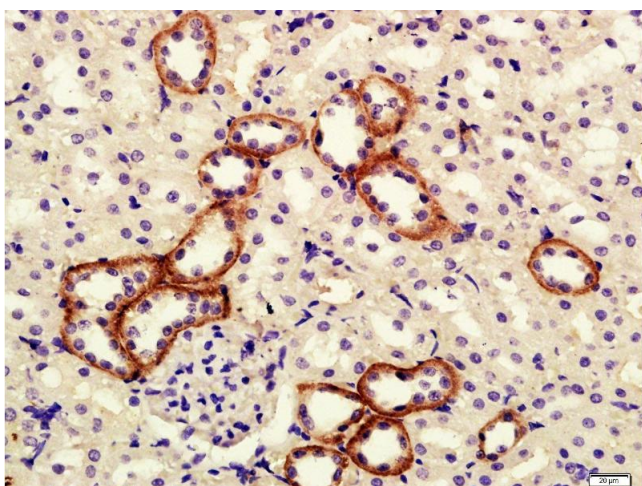
Product cited in: Prudhomme, Glinka, Kurt, Liu, Wang: "The anti-aging protein Klotho is induced by GABA therapy and exerts protective and stimulatory effects on pancreatic beta cells." in: **Biochemical and biophysical research communications**, Vol. 493, Issue 4, pp. 1542-1547, (2017) ([PubMed](#)).

## Images



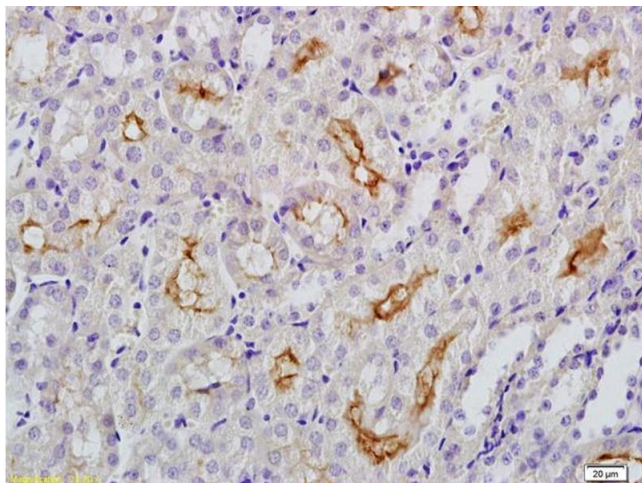
### Immunohistochemistry (Paraffin-embedded Sections)

**Image 1.** Paraformaldehyde-fixed, paraffin embedded rat kidney, Antigen retrieval by boiling in sodium citrate buffer (pH6) for 15min, Block endogenous peroxidase by 3% hydrogen peroxide for 30 minutes, Blocking buffer (normal goat serum) at 37°C for 20min, Antibody incubation with Rabbit Anti-Klotho Polyclonal Antibody, Unconjugated at 1:200 overnight at 4°C, followed by a conjugated secondary and DAB staining.



### Immunohistochemistry (Paraffin-embedded Sections)

**Image 2.** Paraformaldehyde-fixed, paraffin embedded rat kidney tissue, Antigen retrieval by boiling in sodium citrate buffer(pH6) for 15min, Block endogenous peroxidase by 3% hydrogen peroxide for 30 minutes, Blocking buffer (normal goat serum) at 37°C for 20min, Antibody incubation with Rabbit Anti-klotho Polyclonal Antibody, Unconjugated at 1:400 overnight at 4°C, followed by a conjugated secondary and DAB staining



#### Immunohistochemistry

**Image 3.** Formalin-fixed and paraffin embedded mouse kidney labeled with Anti-Klotho Polyclonal Antibody, Unconjugated (ABIN681778) at 1:200 followed by conjugation to the secondary antibody and DAB staining

Please check the [product details page](#) for more images. Overall 4 images are available for ABIN681778.