

Datasheet for ABIN681883

anti-Clathrin Heavy Chain (CLTC) (AA 401-500) antibody[Go to Product page](#)**2** Images

Overview

Quantity:	100 µL
Target:	Clathrin Heavy Chain (CLTC)
Binding Specificity:	AA 401-500
Reactivity:	Human, Mouse
Host:	Rabbit
Clonality:	Polyclonal
Conjugate:	Un-conjugated
Application:	Western Blotting (WB), ELISA, Immunohistochemistry (Paraffin-embedded Sections) (IHC (p))

Product Details

Immunogen:	KLH conjugated synthetic peptide derived from human Clathrin heavy chain.
Isotype:	IgG
Cross-Reactivity:	Human, Mouse
Predicted Reactivity:	Rat,Dog,Cow,Pig,Rabbit
Purification:	Purified by Protein A.

Target Details

Target:	Clathrin Heavy Chain (CLTC)
Alternative Name:	Clathrin heavy chain (CLTC Products)
Background:	Synonyms: CHC17, Clathrin heavy chain 1, Clathrin heavy chain 2, Clathrin heavy chain, Clathrin

Target Details

heavy chain like 1, Clathrin heavy chain on chromosome 17, Clathrin heavy polypeptide, CLH 17, CLH 22, CLH-17, CLH1_HUMAN, CLH17, CLH22, CLTC, CLTCL, CLTCL1, CLTCL2, CLTD, Hc, KIAA0034.

Background: Clathrin is a major protein component of the cytoplasmic face of intracellular organelles, called coated vesicles and coated pits. These specialized organelles are involved in the intracellular trafficking of receptors and endocytosis of a variety of macromolecules. The basic subunit of the clathrin coat is composed of three heavy chains and three light chains. [provided by RefSeq, Jul 2008].

Gene ID: 1213, 8218

Application Details

Application Notes: WB 1:300-5000
ELISA 1:500-1000
IHC-P 1:200-400

Restrictions: For Research Use only

Handling

Format: Liquid

Concentration: 1 µg/µL

Buffer: 0.01M TBS(pH 7.4) with 1 % BSA, 0.02 % Proclin300 and 50 % Glycerol.

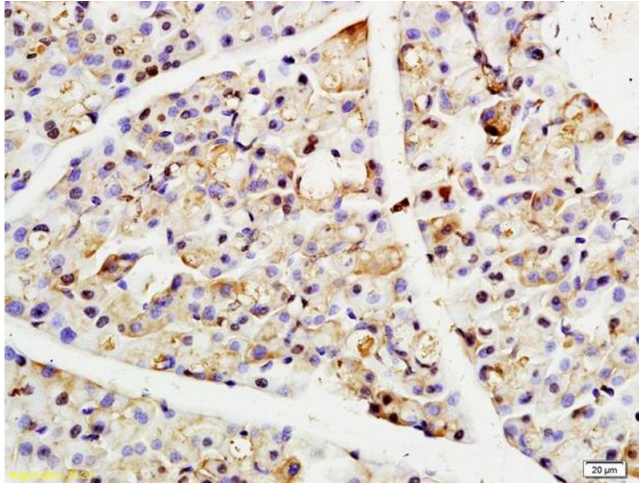
Preservative: ProClin

Precaution of Use: This product contains ProClin: a POISONOUS AND HAZARDOUS SUBSTANCE, which should be handled by trained staff only.

Storage: 4 °C,-20 °C

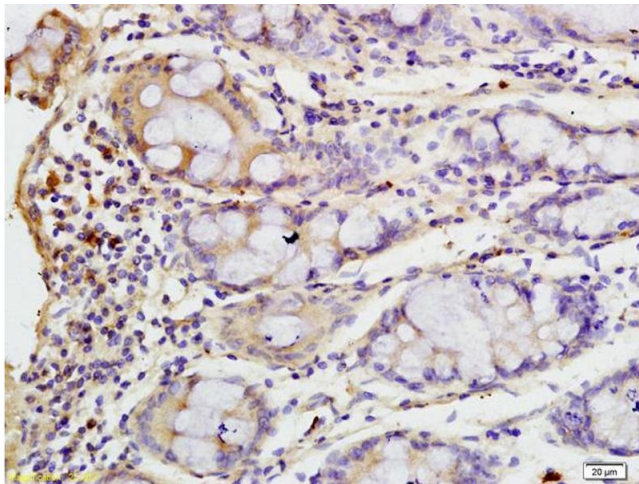
Storage Comment: Shipped at 4°C. Store at -20°C for one year. Avoid repeated freeze/thaw cycles.

Expiry Date: 12 months



Immunohistochemistry

Image 1. Formalin-fixed and paraffin embedded rat pancreas labeled with Anti-Clathrin heavy chain Polyclonal Antibody, Unconjugated (ABIN681883) at 1:200 followed by conjugation to the secondary antibody and DAB staining



Immunohistochemistry

Image 2. Formalin-fixed and paraffin embedded human colon carcinoma labeled with Anti-Clathrin heavy chain Polyclonal Antibody, Unconjugated (ABIN681883) at 1:200 followed by conjugation to the secondary antibody and DAB staining