

Datasheet for ABIN681988
anti-RASSF2 antibody (AA 201-300)

2 Images

[Go to Product page](#)

Overview

Quantity:	100 µL
Target:	RASSF2
Binding Specificity:	AA 201-300
Reactivity:	Mouse, Rat
Host:	Rabbit
Clonality:	Polyclonal
Conjugate:	This RASSF2 antibody is un-conjugated
Application:	Western Blotting (WB), ELISA, Immunofluorescence (Cultured Cells) (IF (cc)), Immunofluorescence (Paraffin-embedded Sections) (IF (p)), Immunohistochemistry (Paraffin-embedded Sections) (IHC (p)), Immunohistochemistry (Frozen Sections) (IHC (fro))

Product Details

Immunogen:	KLH conjugated synthetic peptide derived from human RASSF2
Isotype:	IgG
Specificity:	This protein may cross-react with RASSF6 in mouse, dog, pig and rat in the samples in which they are both found, which are placenta, lung, and brain.
Cross-Reactivity:	Mouse, Rat
Predicted Reactivity:	Human,Dog,Pig,Horse
Purification:	Purified by Protein A.

Target Details

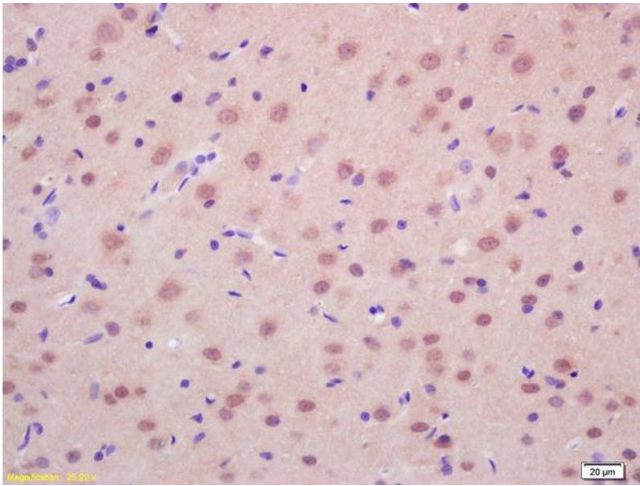
Target:	RASSF2
Alternative Name:	RASSF2 (RASSF2 Products)
Background:	<p>Synonyms: CENP-34, RASFADIN, Ras association domain-containing protein 2, RASSF2, KIAA0168</p> <p>Background: Potential tumor suppressor. Acts as a KRAS-specific effector protein. May promote apoptosis and cell cycle arrest. Stabilizes STK3/MST2 by protecting it from proteasomal degradation.</p>
Gene ID:	9770
UniProt:	P50749

Application Details

Application Notes:	<p>WB 1:300-5000</p> <p>ELISA 1:500-1000</p> <p>IHC-P 1:200-400</p> <p>IHC-F 1:100-500</p> <p>IF(IHC-P) 1:50-200</p> <p>IF(IHC-F) 1:50-200</p> <p>IF(ICC) 1:50-200</p>
Restrictions:	For Research Use only

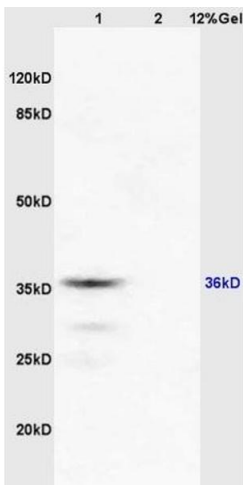
Handling

Format:	Liquid
Concentration:	1 µg/µL
Buffer:	0.01M TBS(pH 7.4) with 1 % BSA, 0.02 % Proclin300 and 50 % Glycerol.
Preservative:	ProClin
Precaution of Use:	This product contains ProClin: a POISONOUS AND HAZARDOUS SUBSTANCE, which should be handled by trained staff only.
Storage:	4 °C, -20 °C
Storage Comment:	Shipped at 4°C. Store at -20°C for one year. Avoid repeated freeze/thaw cycles.
Expiry Date:	12 months



Immunohistochemistry

Image 1. Formalin-fixed and paraffin embedded rat brain labeled with Anti-RASSF2 Polyclonal Antibody, Unconjugated (ABIN681988) at 1:200 followed by conjugation to the secondary antibody and DAB staining.



Western Blotting

Image 2. Lane 1: mouse brain lysates Lane 2: mouse kidney lysates probed with Anti RASSF2 Polyclonal Antibody, Unconjugated (ABIN681988) at 1:200 in 4 °C. Followed by conjugation to secondary antibody at 1:3000 90min in 37 °C. Predicted band 36kD. Observed band size: 36kD.