



[Go to Product page](#)

Datasheet for ABIN682213

## anti-C3AR1 antibody (AA 401-482)

2 Images

2 Publications

### Overview

Quantity:	100 µL
Target:	C3AR1
Binding Specificity:	AA 401-482
Reactivity:	Human, Mouse
Host:	Rabbit
Clonality:	Polyclonal
Conjugate:	This C3AR1 antibody is un-conjugated
Application:	Western Blotting (WB), ELISA, Immunohistochemistry (Frozen Sections) (IHC (fro)), Immunofluorescence (Cultured Cells) (IF (cc)), Immunofluorescence (Paraffin-embedded Sections) (IF (p)), Immunohistochemistry (Paraffin-embedded Sections) (IHC (p))

### Product Details

Immunogen:	KLH conjugated synthetic peptide derived from human C3a Receptor/C3aR
Isotype:	IgG
Cross-Reactivity:	Human, Mouse
Predicted Reactivity:	Rat,Horse,Rabbit
Purification:	Purified by Protein A.

### Target Details

Target:	C3AR1
---------	-------

## Target Details

---

Alternative Name:	C3a Receptor ( <a href="#">C3AR1 Products</a> )
Background:	Synonyms: AZ3B, C3AR, HNFAG09, C3a anaphylatoxin chemotactic receptor, C3a-R, C3AR1, C3R1 Background: Receptor for the chemotactic and inflammatory peptide anaphylatoxin C3a. This receptor stimulates chemotaxis, granule enzyme release and superoxide anion production.
Gene ID:	719
UniProt:	<a href="#">Q16581</a>
Pathways:	<a href="#">Complement System</a>

## Application Details

---

Application Notes:	WB 1:300-5000 ELISA 1:500-1000 IHC-P 1:200-400 IHC-F 1:100-500 IF(IHC-P) 1:50-200 IF(IHC-F) 1:50-200 IF(ICC) 1:50-200
Restrictions:	For Research Use only

## Handling

---

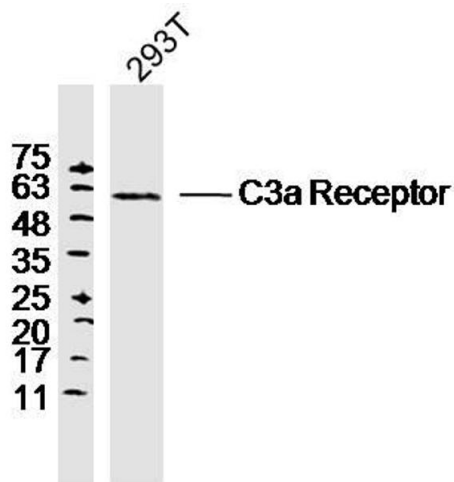
Format:	Liquid
Concentration:	1 µg/µL
Buffer:	0.01M TBS( pH 7.4) with 1 % BSA, 0.02 % Proclin300 and 50 % Glycerol.
Preservative:	ProClin
Precaution of Use:	This product contains ProClin: a POISONOUS AND HAZARDOUS SUBSTANCE, which should be handled by trained staff only.
Storage:	4 °C,-20 °C
Storage Comment:	Shipped at 4°C. Store at -20°C for one year. Avoid repeated freeze/thaw cycles.
Expiry Date:	12 months

## Publications

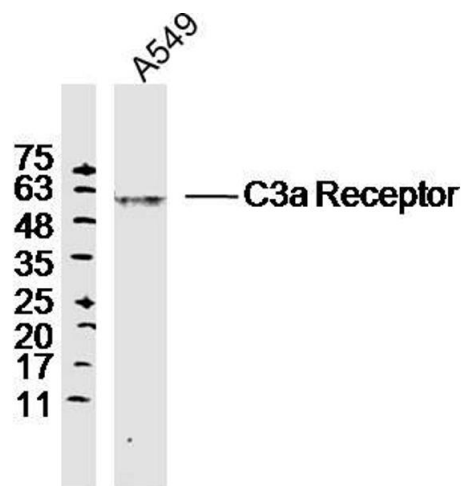
Product cited in: Schäfer, Rasras, Ormenisan, Amslinger, Enzmann, Jäggle, Pauly: "Complement Factor H-Related 3 Enhanced Inflammation and Complement Activation in Human RPE Cells." in: **Frontiers in immunology**, Vol. 12, pp. 769242, (2022) ([PubMed](#)).

Shinjyo, de Pablo, Pekny, Pekna: "Complement Peptide C3a Promotes Astrocyte Survival in Response to Ischemic Stress." in: **Molecular neurobiology**, (2015) ([PubMed](#)).

## Images



**Image 1.** 293T lysates probed with C3a Receptor Polyclonal Antibody, Unconjugated at 1:300 dilution and 4°C overnight incubation. Followed by conjugated secondary antibody incubation at 1:10000 for 60 min at 37°C.



**Image 2.** A549 lysates probed with C3a Receptor Polyclonal Antibody, Unconjugated at 1:300 dilution and 4°C overnight incubation. Followed by conjugated secondary antibody incubation at 1:10000 for 60 min at 37°C.