

Datasheet for ABIN682483

anti-Adrenomedullin 2 antibody (AA 75-148)**2** Images**2** Publications[Go to Product page](#)

Overview

Quantity:	100 µL
Target:	Adrenomedullin 2 (ADM2)
Binding Specificity:	AA 75-148
Reactivity:	Human, Rat, Mouse
Host:	Rabbit
Clonality:	Polyclonal
Conjugate:	This Adrenomedullin 2 antibody is un-conjugated
Application:	ELISA, Flow Cytometry (FACS), Immunofluorescence (Cultured Cells) (IF (cc)), Immunofluorescence (Paraffin-embedded Sections) (IF (p)), Immunohistochemistry (Frozen Sections) (IHC (fro)), Immunohistochemistry (Paraffin-embedded Sections) (IHC (p))

Product Details

Immunogen:	KLH conjugated synthetic peptide derived from human ADM2/ Intermedin
Isotype:	IgG
Cross-Reactivity:	Human, Mouse, Rat
Predicted Reactivity:	Pig,Horse,Rabbit
Purification:	Purified by Protein A.

Target Details

Target:	Adrenomedullin 2 (ADM2)
---------	-------------------------

Target Details

Alternative Name:	ADM2 (ADM2 Products)
Background:	Synonyms: AM2, dJ579N16.4, ADM2, Intermedin Background: IMDL and IMDS may play a role as physiological regulators of gastrointestinal, cardiovascular bioactivities mediated by the CALCRL/RAMPs receptor complexes. Activates the cAMP-dependent pathway.
Gene ID:	79924
UniProt:	Q7Z4H4
Pathways:	Hormone Activity , Feeding Behaviour

Application Details

Application Notes:	ELISA 1:500-1000 FCM 1:20-100 IHC-P 1:200-400 IHC-F 1:100-500 IF(IHC-P) 1:50-200 IF(IHC-F) 1:50-200 IF(ICC) 1:50-200
Restrictions:	For Research Use only

Handling

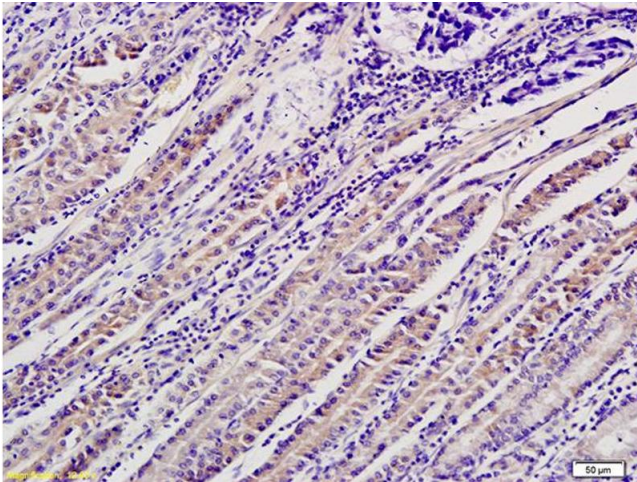
Format:	Liquid
Concentration:	1 µg/µL
Buffer:	0.01M TBS(pH 7.4) with 1 % BSA, 0.02 % Proclin300 and 50 % Glycerol.
Preservative:	ProClin
Precaution of Use:	This product contains ProClin: a POISONOUS AND HAZARDOUS SUBSTANCE, which should be handled by trained staff only.
Storage:	4 °C,-20 °C
Storage Comment:	Shipped at 4°C. Store at -20°C for one year. Avoid repeated freeze/thaw cycles.
Expiry Date:	12 months

Publications

Product cited in: Møller, Kirkeby, Vikeså, Nielsen, Cayé-Thomasen: "The human endolymphatic sac expresses natriuretic peptides." in: **The Laryngoscope**, Vol. 127, Issue 6, pp. E201-E208, (2017) ([PubMed](#)).

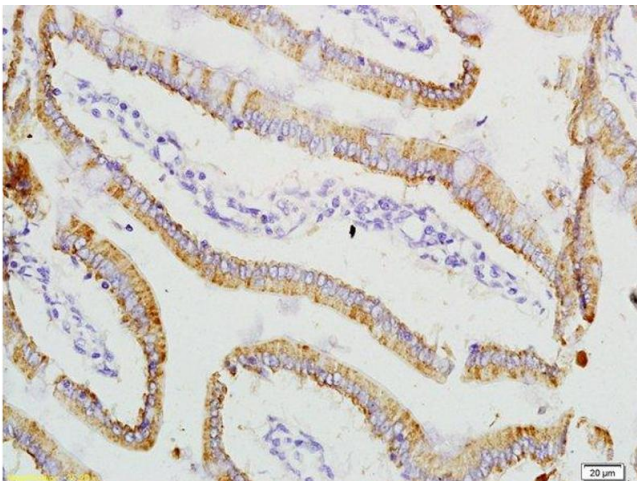
Nagasaki, Fukui, Asano, Ono, Miki, Araki, Isobe, Nakashima, Takahashi, Sasano, Sato: "Induction of adrenomedullin 2/intermedin expression by thyroid stimulating hormone in thyroid." in: **Molecular and cellular endocrinology**, Vol. 395, Issue 1-2, pp. 32-40, (2014) ([PubMed](#)).

Images



Immunohistochemistry

Image 1. Formalin-fixed and paraffin embedded human gastric cancer labeled with Anti-ADM2 Polyclonal Antibody, Unconjugated (ABIN682483) followed by conjugation to the secondary antibody and DAB staining



Immunohistochemistry

Image 2. Formalin-fixed and paraffin embedded rat small intestine labeled with Anti-ADM2 Polyclonal Antibody, Unconjugated (ABIN682483) at 1:200 followed by conjugation to the secondary antibody and DAB staining