



[Go to Product page](#)

Datasheet for ABIN682678

## anti-BMI1 antibody (AA 61-160)

### 3 Images

#### Overview

Quantity:	100 µL
Target:	BMI1
Binding Specificity:	AA 61-160
Reactivity:	Human
Host:	Rabbit
Clonality:	Polyclonal
Conjugate:	This BMI1 antibody is un-conjugated
Application:	Western Blotting (WB), ELISA, Immunohistochemistry (Paraffin-embedded Sections) (IHC (p)), Flow Cytometry (FACS), Immunohistochemistry (Frozen Sections) (IHC (fro)), Immunofluorescence (Cultured Cells) (IF (cc)), Immunofluorescence (Paraffin-embedded Sections) (IF (p))

#### Product Details

Immunogen:	KLH conjugated synthetic peptide derived from human Bmi1/PCGF4
Isotype:	IgG
Cross-Reactivity:	Human
Predicted Reactivity:	Mouse,Rat,Dog,Cow,Chicken,Rabbit
Purification:	Purified by Protein A.

#### Target Details

Target:	BMI1
---------	------

## Target Details

---

Alternative Name:	BMI1 ( <a href="#">BMI1 Products</a> )
Background:	<p>Synonyms: PCGF4, RNF51, FLVI2/BMI1, Polycomb complex protein BMI-1, Polycomb group RING finger protein 4, RING finger protein 51, BMI1</p> <p>Background: Component of a Polycomb group (PcG) multiprotein PRC1-like complex, a complex class required to maintain the transcriptionally repressive state of many genes, including Hox genes, throughout development. PcG PRC1 complex acts via chromatin remodeling and modification of histones, it mediates monoubiquitination of histone H2A 'Lys-119', rendering chromatin heritably changed in its expressibility. In the PRC1 complex, it is required to stimulate the E3 ubiquitin-protein ligase activity of RNF2/RING2.</p>
Gene ID:	648
UniProt:	<a href="#">P35226</a>
Pathways:	<a href="#">Cell Division Cycle</a> , <a href="#">Autophagy</a>

## Application Details

---

Application Notes:	<p>WB 1:300-5000</p> <p>ELISA 1:500-1000</p> <p>FCM 1:20-100</p> <p>IHC-P 1:200-400</p> <p>IHC-F 1:100-500</p> <p>IF(IHC-P) 1:50-200</p> <p>IF(IHC-F) 1:50-200</p> <p>IF(ICC) 1:50-200</p>
Restrictions:	For Research Use only

## Handling

---

Format:	Liquid
Concentration:	1 µg/µL
Buffer:	0.01M TBS( pH 7.4) with 1 % BSA, 0.02 % Proclin300 and 50 % Glycerol.
Preservative:	ProClin
Precaution of Use:	This product contains ProClin: a POISONOUS AND HAZARDOUS SUBSTANCE, which should be handled by trained staff only.

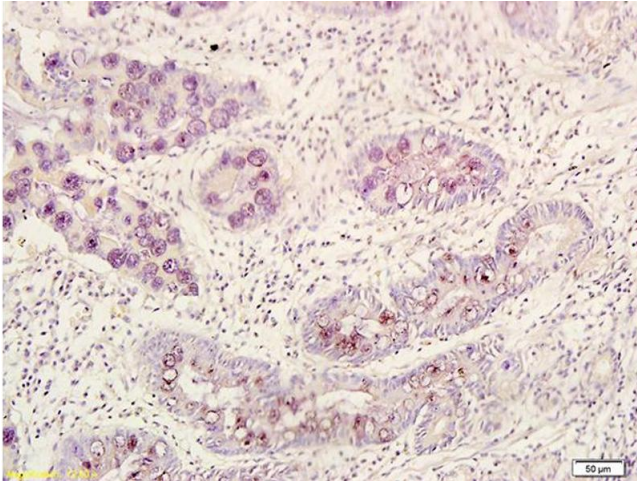
## Handling

Storage: 4 °C, -20 °C

Storage Comment: Shipped at 4°C. Store at -20°C for one year. Avoid repeated freeze/thaw cycles.

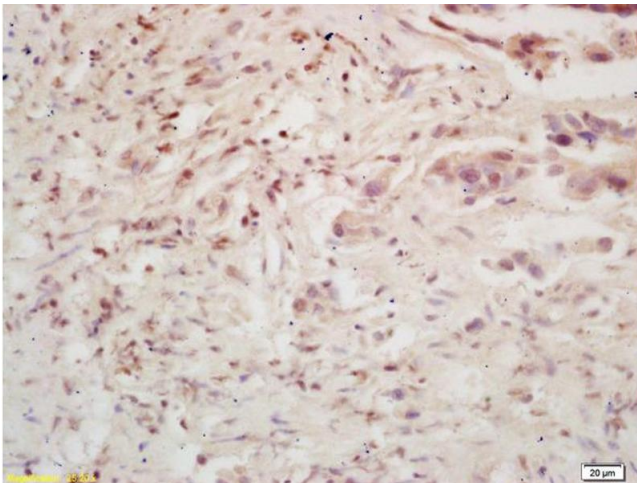
Expiry Date: 12 months

## Images



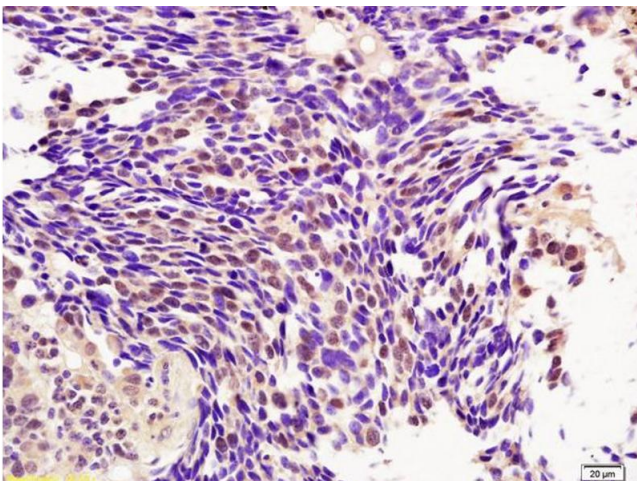
### Immunohistochemistry

**Image 1.** Formalin-fixed and paraffin embedded human gastric carcinoma labeled with Rabbit Anti BMI1/PCGF4 Polyclonal Antibody, Unconjugated (ABIN682678) at 1:200 followed by conjugation to the secondary antibody and DAB staining



### Immunohistochemistry

**Image 2.** Formalin-fixed and paraffin embedded human colon carcinoma labeled with Rabbit Anti BMI1/PCGF4 Polyclonal Antibody, Unconjugated (ABIN682678) at 1:200 followed by conjugation to the secondary antibody and DAB staining



### Immunohistochemistry

**Image 3.** Formalin-fixed and paraffin embedded human lung carcinoma labeled with Rabbit Anti BMI1/PCGF4 Polyclonal Antibody, Unconjugated (ABIN682678) at 1:200 followed by conjugation to the secondary antibody and DAB staining