



Datasheet for ABIN682783
anti-ARFIP2 antibody (pSer260)



[Go to Product page](#)

1 Image

Overview

Quantity:	100 µL
Target:	ARFIP2
Binding Specificity:	pSer260
Reactivity:	Human
Host:	Rabbit
Clonality:	Polyclonal
Conjugate:	This ARFIP2 antibody is un-conjugated
Application:	Western Blotting (WB), ELISA, Immunofluorescence (Cultured Cells) (IF (cc)), Immunofluorescence (Paraffin-embedded Sections) (IF (p)), Immunohistochemistry (Paraffin-embedded Sections) (IHC (p)), Immunohistochemistry (Frozen Sections) (IHC (fro))

Product Details

Immunogen:	KLH conjugated synthetic phosphopeptide derived from human arfaptin 2 around the phosphorylation site of Ser260
Isotype:	IgG
Cross-Reactivity:	Human
Predicted Reactivity:	Mouse,Rat,Dog,Cow,Sheep,Rabbit
Purification:	Purified by Protein A.

Target Details

Target:	ARFIP2
---------	--------

Target Details

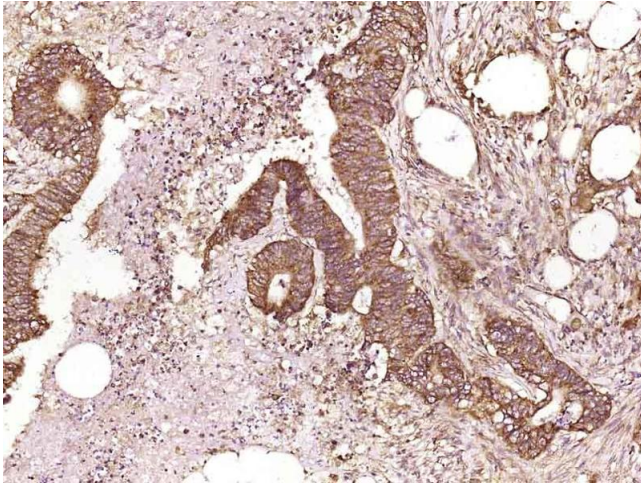
Alternative Name:	arfaptin 2 (ARFIP2 Products)
Background:	<p>Synonyms: ADP ribosylation factor interacting protein 2, Arfaptin 2, ARFIP2, Partner of RAC1, POR1, ARFP2_HUMAN.</p> <p>Background: ARFIP2 is a ubiquitously expressed protein implicated in mediating cross talk between RAC and ARF small GTPases. It has been shown that ARFIP2 binds specifically to GTP-bound ARF1 and ARF6, but binds to Rac-GTP and Rac-GDP with similar affinities. The X-ray structure of arfaptin reveals an elongated, crescent-shaped dimer of 3-helix coiled-coils. Structures of arfaptin with Rac bound to either GDP or the slowly hydrolysable analog GMPPNP show that the switch regions adopt similar conformations in both complexes.</p>
Gene ID:	23647

Application Details

Application Notes:	WB 1:300-5000 ELISA 1:500-1000 IHC-P 1:200-400 IHC-F 1:100-500 IF(IHC-P) 1:50-200 IF(IHC-F) 1:50-200 IF(ICC) 1:50-200
Restrictions:	For Research Use only

Handling

Format:	Liquid
Concentration:	1 µg/µL
Buffer:	0.01M TBS(pH 7.4) with 1 % BSA, 0.02 % Proclin300 and 50 % Glycerol.
Preservative:	ProClin
Precaution of Use:	This product contains ProClin: a POISONOUS AND HAZARDOUS SUBSTANCE, which should be handled by trained staff only.
Storage:	4 °C, -20 °C
Storage Comment:	Shipped at 4°C. Store at -20°C for one year. Avoid repeated freeze/thaw cycles.
Expiry Date:	12 months



Immunohistochemistry (Paraffin-embedded Sections)

Image 1. Paraformaldehyde-fixed, paraffin embedded human colon cancer, Antigen retrieval by boiling in sodium citrate buffer (pH6) for 15min, Block endogenous peroxidase by 3% hydrogen peroxide for 30 minutes, Blocking buffer (normal goat serum) at 37°C for 20min, Antibody incubation with Arfaptin 2 (Ser260) Polyclonal Antibody, Unconjugated at 1:400 overnight at 4°C, followed by a conjugated secondary and DAB staining.