

Datasheet for ABIN683188

**anti-ATP1A1 antibody (pSer16)****2** Images[Go to Product page](#)

## Overview

Quantity:	100 µL
Target:	ATP1A1
Binding Specificity:	pSer16
Reactivity:	Human
Host:	Rabbit
Clonality:	Polyclonal
Conjugate:	This ATP1A1 antibody is un-conjugated
Application:	Western Blotting (WB), ELISA, Immunofluorescence (Paraffin-embedded Sections) (IF (p)), Immunohistochemistry (Paraffin-embedded Sections) (IHC (p)), Immunofluorescence (Cultured Cells) (IF (cc)), Immunohistochemistry (Frozen Sections) (IHC (fro))

## Product Details

Immunogen:	KLH conjugated synthetic phosphopeptide derived from human ATP1A1 around the phosphorylation site of Ser16
Isotype:	IgG
Cross-Reactivity:	Human
Predicted Reactivity:	Mouse,Rat,Dog,Cow,Sheep,Pig,Guinea Pig
Purification:	Purified by Protein A.

## Target Details

Target:	ATP1A1
---------	--------

## Target Details

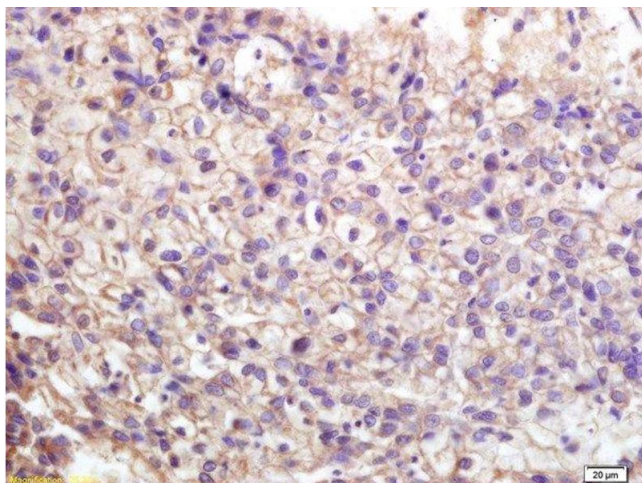
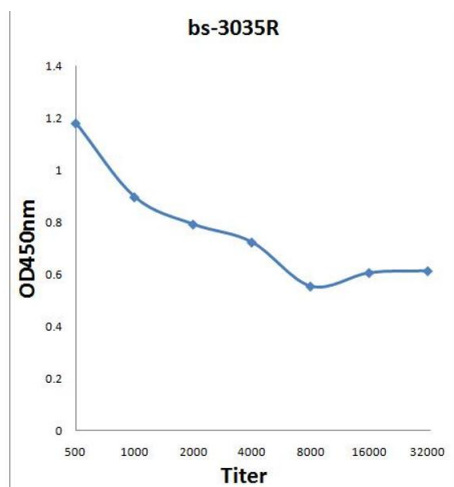
Alternative Name:	ATP1A1 ( <a href="#">ATP1A1 Products</a> )
Background:	<p>Synonyms: Sodium/potassium-transporting ATPase subunit alpha-1, Na(+)/K(+) ATPase alpha-1 subunit, Sodium pump subunit alpha-1, ATP1A1</p> <p>Background: This is the catalytic component of the active enzyme, which catalyzes the hydrolysis of ATP coupled with the exchange of sodium and potassium ions across the plasma membrane. This action creates the electrochemical gradient of sodium and potassium ions, providing the energy for active transport of various nutrients.</p>
Gene ID:	476
UniProt:	<a href="#">P05023</a>
Pathways:	<a href="#">Thyroid Hormone Synthesis</a> , <a href="#">Regulation of Hormone Metabolic Process</a> , <a href="#">Regulation of Hormone Biosynthetic Process</a> , <a href="#">Proton Transport</a> , <a href="#">Ribonucleoside Biosynthetic Process</a>

## Application Details

Application Notes:	WB 1:300-5000 ELISA 1:500-1000 IHC-P 1:200-400 IHC-F 1:100-500 IF(IHC-P) 1:50-200 IF(IHC-F) 1:50-200 IF(ICC) 1:50-200
Restrictions:	For Research Use only

## Handling

Format:	Liquid
Concentration:	1 µg/µL
Buffer:	0.01M TBS( pH 7.4) with 1 % BSA, 0.02 % Proclin300 and 50 % Glycerol.
Preservative:	ProClin
Precaution of Use:	This product contains ProClin: a POISONOUS AND HAZARDOUS SUBSTANCE, which should be handled by trained staff only.
Storage:	4 °C,-20 °C
Storage Comment:	Shipped at 4°C. Store at -20°C for one year. Avoid repeated freeze/thaw cycles.



#### ELISA

**Image 1.** Formalin-fixed and paraffin embedded human lung carcinoma labeled with Anti-Phospho-ATP1A1(Ser16) Polyclonal Antibody, Unconjugated (ABIN683188) at 1:200 followed by conjugation to the secondary antibody and DAB staining.

#### Immunohistochemistry (Paraffin-embedded Sections)

**Image 2.** Formalin-fixed and paraffin embedded human lung carcinoma labeled with Anti-Phospho-ATP1A1(Ser16) Polyclonal Antibody, Unconjugated at 1:200 followed by conjugation to the secondary antibody and DAB staining.