

Datasheet for ABIN683563

anti-CEBPA antibody (pThr226)

3 Images



[Go to Product page](#)

Overview

Quantity:	100 µL
Target:	CEBPA
Binding Specificity:	pThr226
Reactivity:	Human, Mouse, Rat
Host:	Rabbit
Clonality:	Polyclonal
Conjugate:	This CEBPA antibody is un-conjugated
Application:	Western Blotting (WB), ELISA, Immunohistochemistry (Paraffin-embedded Sections) (IHC (p)), Immunofluorescence (Cultured Cells) (IF (cc)), Immunofluorescence (Paraffin-embedded Sections) (IF (p)), Immunohistochemistry (Frozen Sections) (IHC (fro))

Product Details

Immunogen:	KLH conjugated synthetic phosphopeptide derived from human CEBP alpha around the phosphorylation site of Thr226
Isotype:	IgG
Specificity:	This phosphorylated site is homologous to that of Thr222 in Mouse and Rat.
Cross-Reactivity:	Human, Mouse, Rat
Predicted Reactivity:	Dog,Cow,Pig,Chicken,Rabbit
Purification:	Purified by Protein A.

Target Details

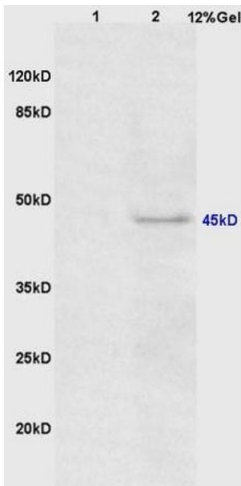
Target:	CEBPA
Alternative Name:	Cebp alpha (CEBPA Products)
Background:	Synonyms: CEBP, C/EBP-alpha, CCAAT/enhancer-binding protein alpha, C/EBP alpha, CEBPA Background: C/EBP is a DNA-binding protein that recognizes two different motifs: the CCAAT homology common to many promoters and the enhanced core homology common to many enhancers.
Gene ID:	1050
UniProt:	P49715
Pathways:	Brown Fat Cell Differentiation , Positive Regulation of fat Cell Differentiation

Application Details

Application Notes:	WB 1:300-5000 ELISA 1:500-1000 IHC-P 1:200-400 IHC-F 1:100-500 IF(IHC-P) 1:50-200 IF(IHC-F) 1:50-200 IF(ICC) 1:50-200
Restrictions:	For Research Use only

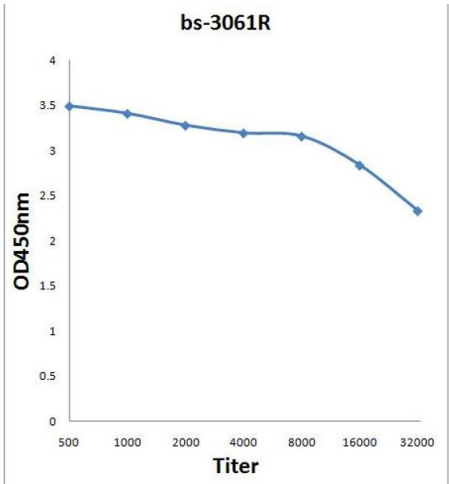
Handling

Format:	Liquid
Concentration:	1 µg/µL
Buffer:	0.01M TBS(pH 7.4) with 1 % BSA, 0.02 % Proclin300 and 50 % Glycerol.
Preservative:	ProClin
Precaution of Use:	This product contains ProClin: a POISONOUS AND HAZARDOUS SUBSTANCE, which should be handled by trained staff only.
Storage:	4 °C, -20 °C
Storage Comment:	Shipped at 4°C. Store at -20°C for one year. Avoid repeated freeze/thaw cycles.
Expiry Date:	12 months



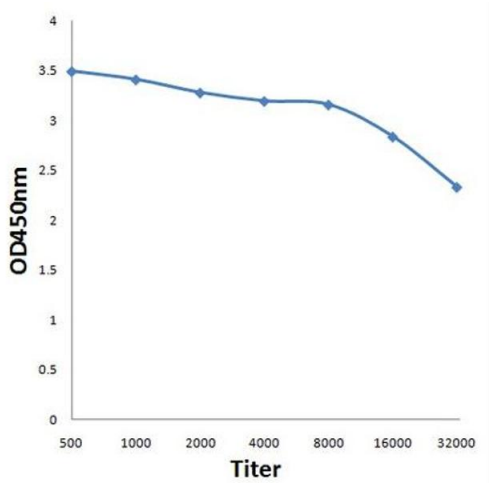
SDS-PAGE

Image 1. Lane 1: mouse mouse lysates Lane 2: mouse heart lysates probed with Anti Phospho-CEBP alpha (Thr222/226) Polyclonal Antibody, Unconjugated (ABIN683563) at 1:200 in 4 °C. Followed by conjugation to secondary antibody at 1:3000 90min in 37 °C. Predicted band 45kD. Observed band size: 45kD.



ELISA

Image 2. Antigen: 0.2 µg/100 µL Primary: Antiserum, 1:500, 1:1000, 1:2000, 1:4000, 1:8000, 1:16000, 1:32000; Secondary: HRP conjugated Goat-Anti-Rabbit IgG at 1: 5000; TMB staining; Read the data in MicroplateReader by 450



ELISA

Image 3. Antigen: 0.2ug/100ul, Primary: Antiserum, 1:500, 1:1000, 1:2000, 1:4000, 1:8000, 1:16000, 1:32000, Secondary: HRP conjugated Goat-Anti-Rabbit IgG at 1: 5000, TMB staining, Read the data in MicroplateReader by 450nm